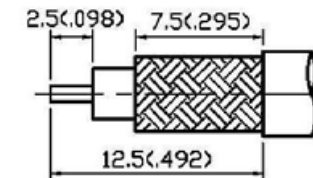
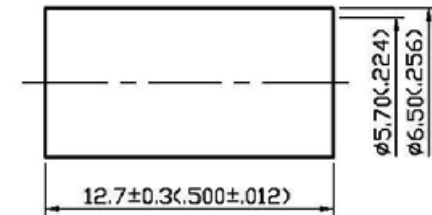
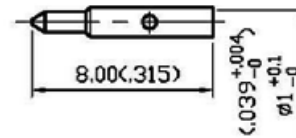
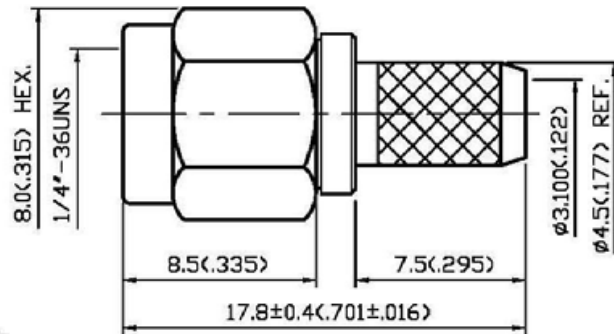


NO	DESCRIPTION	DATE
①	BACKGROUND FORMAT UPDATED	06.26.02'
②	ADD STRIPPING DIMENSION	02.23.04'
③	BACKGROUND FORMAT UPDATED	08.25.08'
④	DEL. CABLE RETENTION	09.24.10'
⑤	WORKING VOLTAGE — VOLTAGE RATING DEL. PROOF VOLTAGE	09.24.13'



⑤ STRIPPING DIMENSION  
SCALE 3:1

### 1.0 ELECTRICAL

- 1.1 FREQUENCY RANGE: DC-12.4 GHz
- 1.2 NOMINAL IMPEDANCE: 50 OHM
- 1.3 VOLTAGE RATING: 500 VOLTS MAX. ⑤
- 1.4 VSWR: 1.274 MAX.

### 2.0 MATERIALS

- 2.1 BODIES: BRASS PER JIS-C3604
- 2.2 CENTER CONTACT: BRASS PER JIS-C3804
- 2.3 INSULATION: TEFLON PER ASTM D1457 AND ASTM D1710
- 2.4 CRIMP FERRULE: BRASS PER JIS-C2700

### 3.0 FINISHES AND OTHERS

- 3.1 SEE BELOW TABLE FOR DETAILS.

### 4.0 MECHANICAL

- 4.1 INTERFACE IN ACCORDANCE WITH: MIL-STD-348A
- 4.2 FOR USE WITH RG142U OR SIMILAR STYLE CABLE
- 4.3 CABLE ATTACHMENT: OUTER: CRIMP, INNER: SOLDER/CRIMP
- 4.4 RECOMMENDED COUPLING TORQUE: 3 TO 5 in-lbs
- 4.5 CRIMP SIZE REQUIRED: CONTACT: 0.92(.036) SQ. CRIMP TOOL  
FERRULE: 5.8(.221) HEX. CRIMP TOOL

### 5.0 ENVIRONMENTAL

- 5.1 OPERATING TEMPERATURE RANGE: -65° C TO +165° C

NO	DESCRIPTION	MATERIAL	Q'TY	FINISH
7	CRIMP FERRULE	BRASS	1	GOLD
8	CENTER CONTACT	BRASS	1	GOLD 50μ" MIN.
5	BODY	BRASS	1	GOLD 3μ" MIN.
4	INSULATION	TEFLON	1	NONE
3	WASHER	STAINLESS STEEL	1	NONE
2	GASKET	SILICONE	1	RED
1	SHELL	BRASS	1	GOLD 3μ" MIN.
NO	DESCRIPTION	MATERIAL	Q'TY	FINISH



APPROVED

by \_\_\_\_\_ DATE: \_\_\_\_\_

DESCRIPTION		SMA STRAIGHT PLUG CRIMP										
製圖	DRAWN	TOLERANCE	品名	19-03-4	T.G.G	142U	日期	DATE	版次	REV.	DWG.NO.	19-0126
	Yoko			\ROHS COMPLIANT	<50Ω	10.14.95'		A-5				
檢圖	CHECK	.XX	±0.1	單位	mm(in)	SCALE	比例	4:1				
	Arc											
認定	APPROVAL	.XXX	±0.05									
	Angela			ANGLE	±5°							