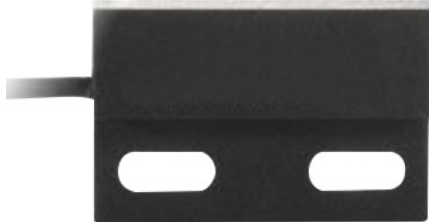


RoHS  
Compliant



## Features

- Adjustable switching point
- Various sensitivity ranges available
- Customized types available

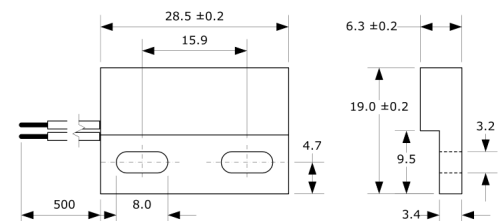
Electrical Characteristics		@ 25 °C
Contact form		A
Contact rating max.	W / VA	10
Switching voltage max.	V DC	200
	V AC	140
Switching current max.	A	1
Carry current max.	A	1.2
Breakdown voltage min.	V DC	240
Total resistance max. (initial)	mΩ	150
Insulation resistance min.	Ω	10 <sup>10</sup>

Magnetical Characteristics (of unmodified Reed Switch)		@ 25°C
Pull in range available	AT	10 - 25
Drop out min.	AT	4
Test coil	TC	014
Test equipment tolerance	± AT	2

Operating Characteristics (of unmodified Reed Switch)		@ 25°C
Switching frequency max.	Hz	500
Resonant frequency typ.	Hz	4000
Operate time max. (incl. bounce)	ms	1
Release time max.	ms	0.4

Environmental Characteristics		
Operating temperature	°C	-20 to +85
Vibration (50-2000 Hz)	g	20
Shock (1/2 sin 11 ms)	g	100

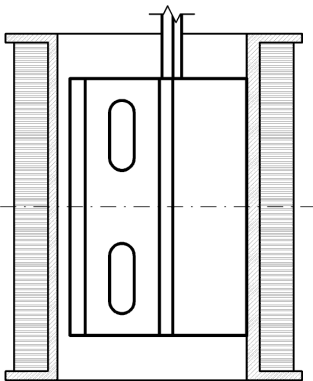
## Dimensions



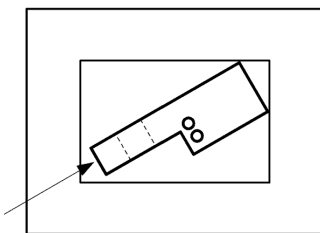
# Reed Sensor Switch

Material Information		
	Material	Colour
Housing	PA-GF	Black
Cable	UL 1007/1569, AWG 20, 4 mm stripped and tinned	
Potting compound	Epoxy	

## Test Procedure of final Reed Sensor



Test Parameters	
Test coil	TC- 328
Test programs	
AT range	Test program
1 = 10 to 15 AT	MP-MS-328-3-1



- Test Coil placed in vertical position
- Reed Sensor centered in Test Coil
- Reed Sensor pushed into opposite corner of Test Coil

## Part Number Table

Description	Part Number
Reed Sensor Switch, Flatpack, 10 to 15AT	MP-MS-328-3-1-0500

**Important Notice :** This data sheet and its contents (the "Information") belong to the members of the AVNET group of companies (the "Group") or are licensed to it. No licence is granted for the use of it other than for information purposes in connection with the products to which it relates. No licence of any intellectual property rights is granted. The Information is subject to change without notice and replaces all data sheets previously supplied. The Information supplied is believed to be accurate but the Group assumes no responsibility for its accuracy or completeness, any error in or omission from it or for any use made of it. Users of this data sheet should check for themselves the Information and the suitability of the products for their purpose and not make any assumptions based on information included or omitted. Liability for loss or damage resulting from any reliance on the Information or use of it (including liability resulting from negligence or where the Group was aware of the possibility of such loss or damage arising) is excluded. This will not operate to limit or restrict the Group's liability for death or personal injury resulting from its negligence. Multicomp Pro is the registered trademark of Premier Farnell Limited 2019.