



## Datasheet

# Chrome Plated Steel Bridge Handle

ENGLISH



### Fixing Type

Male thread with nuts for fixing from above.

### Material

Chrome plated steel

### Finish

Highly polished

### Thread

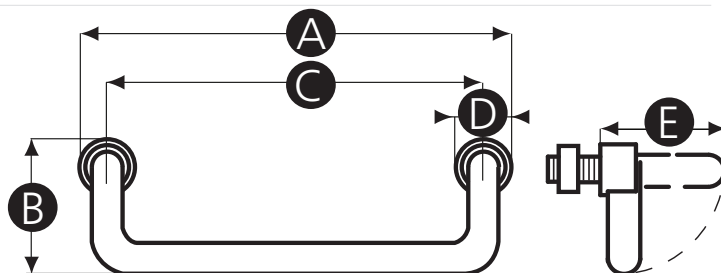
Male thread

### Thread Material

Zinc plated steel

### Info

This handle has a 90 degree folding action. Used where minimal protrusion is required.



Part No.	A	B	C	D	E	Thread size	Thread length (mm)
237637	116	42	100	16	51	M10	15
237479	138	42	120	18	51	M10	15
237485	198	42	180	18	51	M10	15