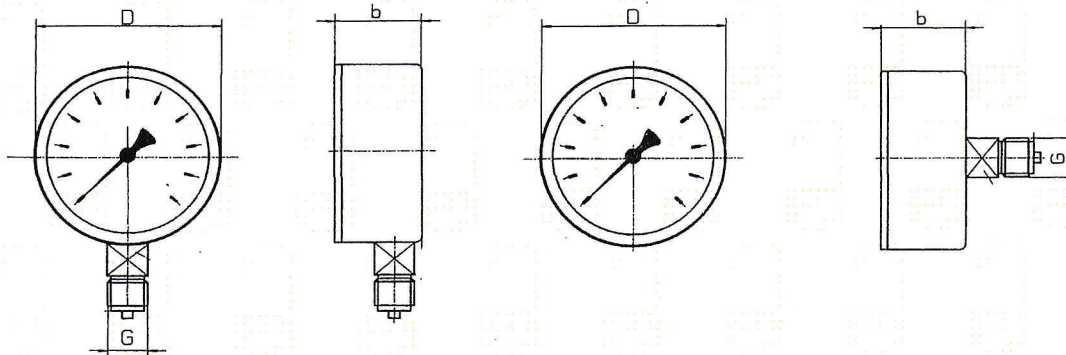
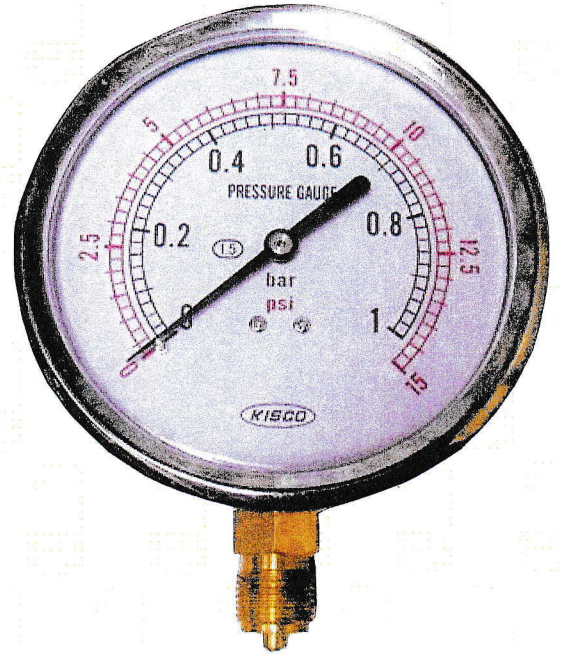


# KISCO

## GLYCERINE FILLABLE HALF STAINLESS STEEL PRESSURE GAUGE

Diameter:	40, 50, 63, 75, 100, mm
Accuracy:	1.5 , 2.5 % to the full scale value
Execution:	Case & Cover - Stainless Steel (SS 304)
Measuring system:	Copper alloy
Dial:	Aluminium white, letters black & Red
Window:	Polycarbonate window
Connection:	1/8 PT, 1/4 PT, G 1/4, G 3/8, G1/2 ...
Connection positon:	Bottom, backside centre, backside lower
Options:	Range: 0-10,100,1000--- Bar /Psi , Mpa / Bar, Vacuum gauge, Compound gauge. Back flange (B Type) / front flange (BD Type)



	D	b	G
1	100,75,63,50,40	37,31,30,30,26	3/8 ,1/2,1/4,1/4PT ,1/8 PT bottom
2	100,75,63,50,40	36,32,30,29,26	3/8 ,1/2,1/4,1/4 PT,1/8 PT back

( Mass in mm )

We reserve the right to change technical details.