

FEATURES

- Inductive sensors offer precise detection
- Long-term reliability and high accuracy
- The sensors are completely encapsulated
- Additional features include a short circuit
- 2m PVC pre-wired

RS PRO M12 x 1 Inductive Sensor - Barrel, PNP-NO Output, 2 mm Detection, IP67, Cable Terminal

RS Stock No.: 701-8225



RS Professionally Approved Products bring to you professional quality parts across all product categories. Our product range has been tested by engineers and provides a comparable quality to the leading brands without paying a premium price.

Product Description

Introducing the range of RS PRO Inductive Proximity Sensors. These versatile and high-quality sensors are an essential addition to any environment where measurement of attributes like pressure, thickness, etc. are integral to business operations, like manufacturing plants and industrial environments. With the RS PRO seal of approval, you are guaranteed a premium performance product, without the premium product price tag.

General Specifications

Output Type	PNP-NO
Connection/Terminal Type	Cable
Cable length	44mm
Minimum Operating Temperature	-25°C
Maximum Operating Temperature	75°C

Electrical Specifications

Operating Supply Voltage	10VDC to 30VDC
Switching Current	200mA
Switching Frequency	2kHz
Voltage drop	≤2V
Temperature drift / Hysteresis	±10%
Wiring technique	3 wire
Contact maximum DC Voltage	30V
Short Circuit Overload Protection	YES
Reverse Polarity Protection	YES
Overload Protection	YES

Mechanical Specifications

Body Style	Barrel
Mounting Type	Flush Mount
Thread Size	M12x1
Housing Material	Nickel Plated Brass
Length	44mm
Shock and Vibration Resistance	30g, 11ms/10Hz to 55Hz, 1mm

Protection Category

IP Rating	IP67
------------------	------

Approvals

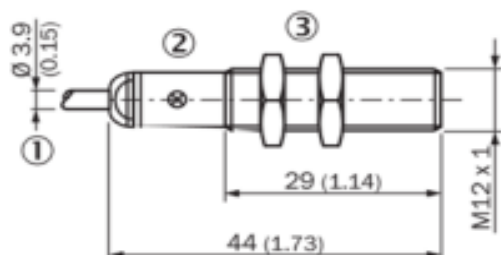
Compliance/Certifications	cULus Listed, EN 60947-5-2, RoHS Compliant, UL
----------------------------------	--



Inductive Proximity Sensors

Dimensional drawing (Dimensions in mm (inch))

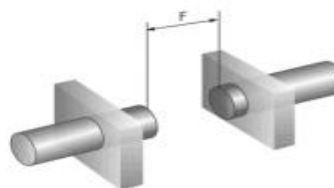
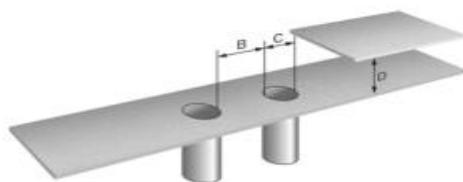
IME12 Short body housing, cable, flush



1. Connection
2. Indication LED
3. Fastening nuts (2x); width across 17, metal

Installation

Flush installation



Connection diagram

