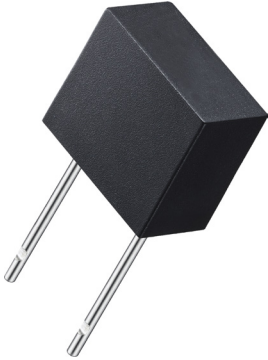


Time Lag Radial Leaded Micro Fuse

multicomp PRO

**RoHS
Compliant**



Agency Approvals

Agency	Ampere Rating
35 amperes or 10 x rated current ; whichever is greater at 250V AC	
UL Recognized	50mA - 10A
VDE	50mA - 6.3A
CSA Acceptance	50mA - 6.3A
TUV	50mA - 10A
PSE	1A - 10A
KTL	50mA - 6.3A
CCC	50mA - 6.3A
SEMKO	63mA - 10A

130 amperes at 250V AC (optional)	
Recognized Component for Canada and US	50mA - 10A
TUV	50mA - 10A
PSE	1A - 10A
KTL	500mA - 6.3A
CQC	500mA - 10A
50 amperes at 300V AC (optional)	
Recognized Component for Canada and US	50mA - 10A
TUV	50mA - 10A
PSE	1A - 10A
100 amperes at 400V AC (optional)	
Recognized Component for Canada and US	50mA - 10A
TUV	1A - 10A

Specifications

Material

Base and Cover	: Black thermoplastic, UL 94-V0
Round Pins	: Tin Plated Copper
Operating Temperature	: -55°C to +125°C

Electrical Characteristics

Ampere Rating	Opening Time									
	1.5 In		2.1 In		2.75 In		4 In		10 In	
	Min.	Max.	Min.	Max.	Min.	Max.	Min.	Max.	Min.	Max.
1A to 6.3A	60 min.	2 min.	400 ms	10 sec	150 ms	3 sec	20 ms	150 ms		

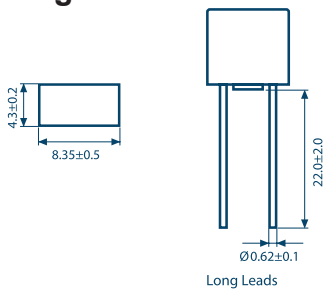
Newark.com/multicomp-pro
Farnell.com/multicomp-pro
Element14.com/multicomp-pro

multicomp PRO

Time Lag Radial Leaded Micro Fuse

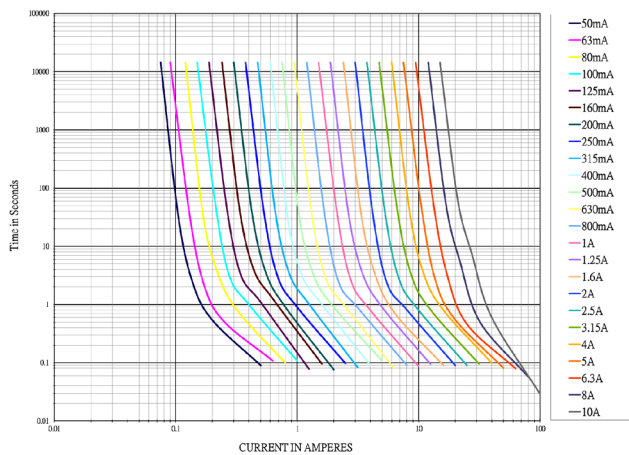
Part Number	Ampere Rating (A)	Voltage Rating (V)	Nominal Cold Resistance (Ω)	Voltage Drop (mv) Max.	Nominal Melting I^2t ($A^2 \text{ sec.}$)
MP005515	1	300	0.075	140	8.73
MP005516	2		0.0316		36
MP005517	3.15		0.0188		93.768
MP005518	4		0.0136		158.4
MP005519	5		0.01		202.5
MP005520	6.3		0.0074		310.77
MP005521	1	400	0.075	140	8.73
MP005522	2		0.0316		36
MP005523	3.15		0.0188		93.768
MP005524	4		0.0136		158.4
MP005525	5		0.01		202.5
MP005526	6.3		0.0074		310.77

Diagram

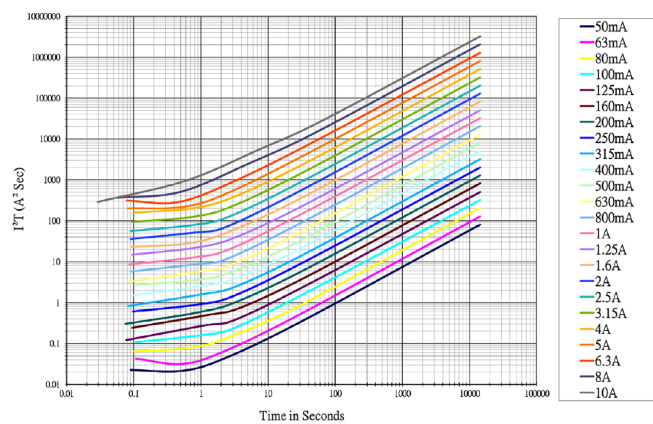


Dimensions : Millimetres

Time Current Characteristic Curve



Average Melting I^2t Curves

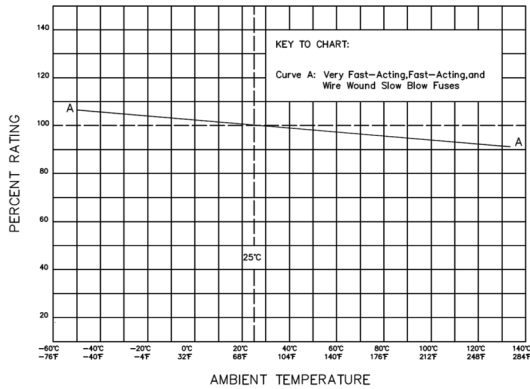


Time Lag Radial Leaded Micro Fuse



Temperature Derating Curve

CHART SHOWING EFFECT OF AMBIENT TEMPERATURE
ON CURRENT-CARRYING CAPACITY



Part Number Table

Description	Part Number
Time Lag Micro Fuse, 1A, 300V, Radial Leaded	MP005515
Time Lag Micro Fuse, 2A, 300V, Radial Leaded	MP005516
Time Lag Micro Fuse, 3.15A, 300V, Radial Leaded	MP005517
Time Lag Micro Fuse, 4A, 300V, Radial Leaded	MP005518
Time Lag Micro Fuse, 5A, 300V, Radial Leaded	MP005519
Time Lag Micro Fuse, 6.3A, 300V, Radial Leaded	MP005520
Time Lag Micro Fuse, 1A, 400V, Radial Leaded	MP005521
Time Lag Micro Fuse, 2A, 400V, Radial Leaded	MP005522
Time Lag Micro Fuse, 3.15A, 400V, Radial Leaded	MP005523
Time Lag Micro Fuse, 4A, 400V, Radial Leaded	MP005524
Time Lag Micro Fuse, 5A, 400V, Radial Leaded	MP005525
Time Lag Micro Fuse, 6.3A, 400V, Radial Leaded	MP005526

Important Notice : This data sheet and its contents (the "Information") belong to the members of the AVNET group of companies (the "Group") or are licensed to it. No licence is granted for the use of it other than for information purposes in connection with the products to which it relates. No licence of any intellectual property rights is granted. The Information is subject to change without notice and replaces all data sheets previously supplied. The Information supplied is believed to be accurate but the Group assumes no responsibility for its accuracy or completeness, any error in or omission from it or for any use made of it. Users of this data sheet should check for themselves the Information and the suitability of the products for their purpose and not make any assumptions based on information included or omitted. Liability for loss or damage resulting from any reliance on the Information or use of it (including liability resulting from negligence or where the Group was aware of the possibility of such loss or damage arising) is excluded. This will not operate to limit or restrict the Group's liability for death or personal injury resulting from its negligence. Multicomp Pro is the registered trademark of Premier Farnell Limited 2019.

