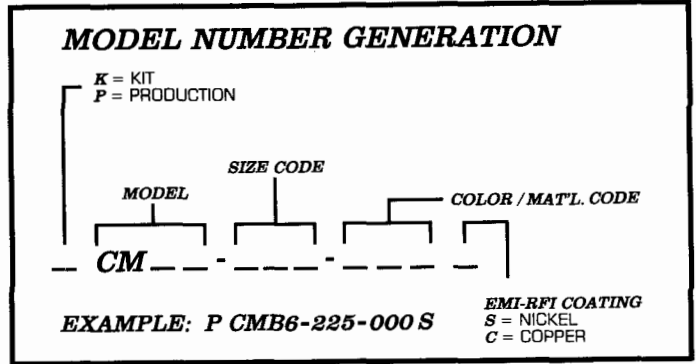


FOR ENGINEERING DRAWING SEE SIDE 2

\*SUPPLIED WITH KIT ONLY

MODEL	① TOP COVER	② BOTTOM COVER	*③ PANEL BLANK	④ FEET	⑤ SCREW	⑥ BAIL FOOT RIGHT	⑦ BAIL FOOT LEFT	⑧ BAIL	⑨ SCREW	⑩ NUT	⑪ LOCK WASHER
<b>CM6 225</b>	60214-01	60214-02	60222-01	60221-01	60163-09						
<b>CM6 300</b>	60262-01	60262-02	60222-02	60221-01	60163-01						
<b>CMB6 225</b>	60214-01	63683-01	60222-01	62152-01	60163-09	61735-02	61735-01	63669-01	62153-01	63291-01	63676-01
<b>CMB6 300</b>	60262-01	63683-02	60222-02	62152-01	60163-01	61735-02	61735-01	63669-01	62153-01	63291-01	63676-01



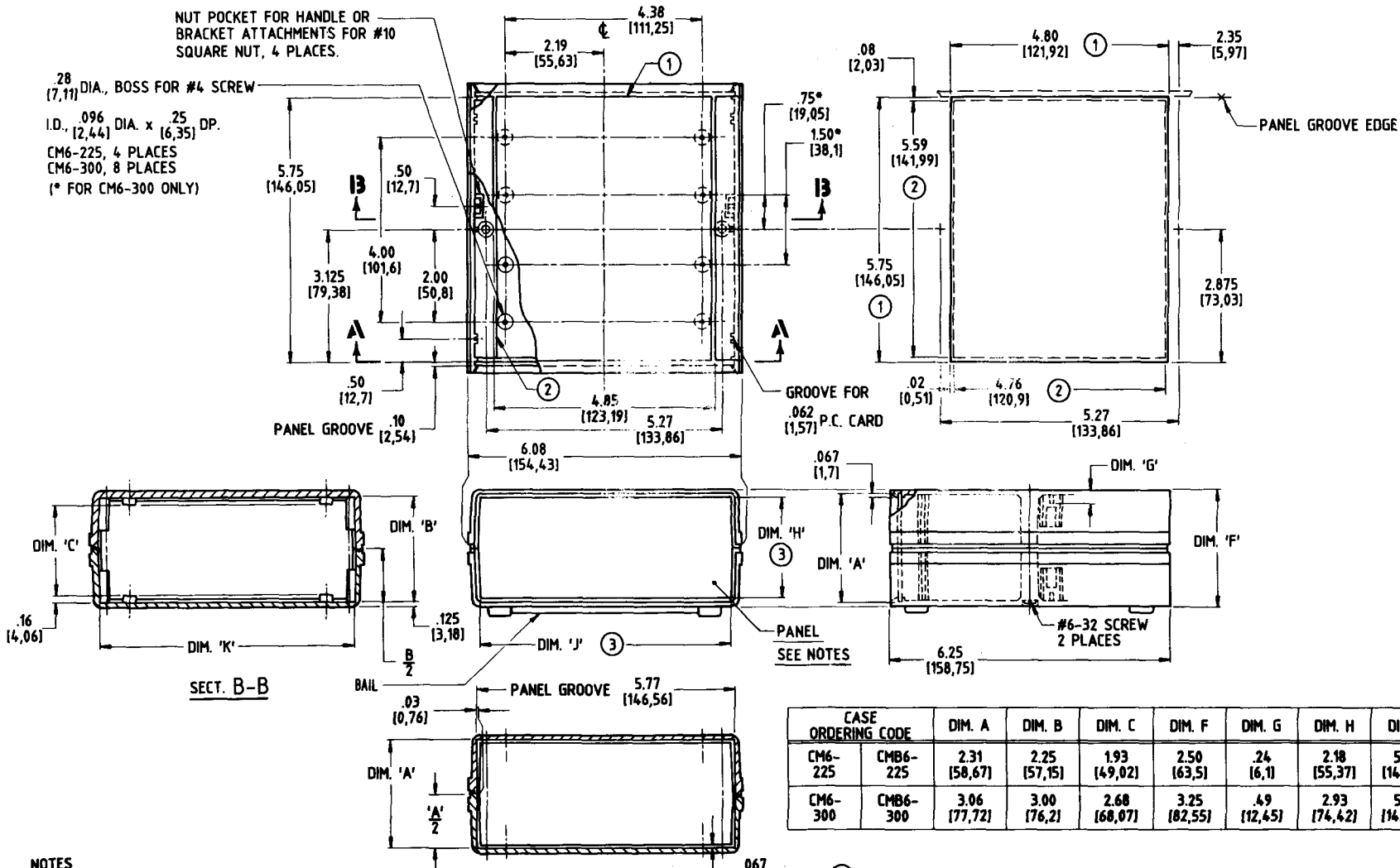
COLOR / MATERIAL CODE		
COLOR	94HB	94VO
BLACK	000	028
GREY	001	024
TAN	002	025
P.C.BONE	039	060

**CM6-225 & 300**  
**CMB6-225 & 300**



NUT POCKET FOR HANDLE OR BRACKET ATTACHMENTS FOR #10 SQUARE NUT, 4 PLACES.

.28 DIA., BOSS FOR #4 SCREW  
I.D., .096 DIA. x .25 DP.  
CM6-225, 4 PLACES  
CM6-300, 8 PLACES  
(\* FOR CM6-300 ONLY)



SECT. B-B

SECT. A-A

INCHES  
[mm]

**NOTES**

**CM6-225 PANEL SIZE:**

2.312±.010 [58,73±0,25]H, x 5.75±.011[146,05±0,25]W, x .090±.005 [2,29±0,13]TH'K.

**CM6-300 PANEL SIZE:**

3.062±.010 [77,78±0,25]H, x 5.75±.011[146,05 ±0,25]W, x .090±.005 [2,29±0,13] TH'K.

CASE ORDERING CODE		DIM. A	DIM. B	DIM. C	DIM. F	DIM. G	DIM. H	DIM. J	DIM. K
CM6-225	CMB6-225	2.31 [58,67]	2.25 [57,15]	1.93 [49,02]	2.50 [63,5]	.24 [6,1]	2.18 [55,37]	5.62 [142,75]	5.69 [144,53]
CM6-300	CMB6-300	3.06 [77,72]	3.00 [76,2]	2.68 [68,07]	3.25 [82,55]	.49 [12,45]	2.93 [74,42]	5.60 [142,24]	5.66 [143,76]

- ① EXTERIOR INSERT AREA, FOR IN MOLD MODIFICATION. TYPICAL ON TOP AND BOTTOM COVERS.
- ② INTERIOR INSERT AREA, FOR IN MOLD MODIFICATION. TYPICAL ON TOP AND BOTTOM COVERS.
- ③ USABLE PANEL AREA.

CM6-225 & 300  
CMB6-225 & 300

