

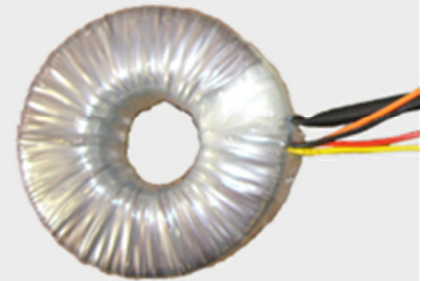
Datasheet

Toroidal Transformers – open type 30-50VA

RS PRO

Standard toroidal transformers designed according to the following specifications.

- High quality safety and isolating transformers designed for use in control circuits and general applications
- Very good quality, low loss and noise toroidal core
- Environmentally friendly, low energy dissipation
- Dual primary windings for parallel or serial connection
- High efficiency, low regulation design
- Dual secondary windings
- Detailed product specification on permanent label
- Designed and manufactured to confirm to BS EN 61558-1 and UL506
- 100% electrical and flash tested
- Mounting kit included: 2 rubber washers, 1 metal disc, bolt and nut

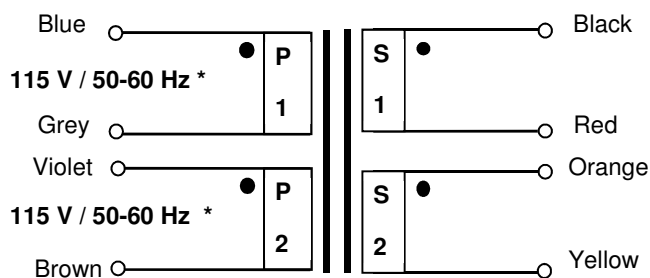


Specifications

Power: 30 – 50 VA
 Frequency: 50/60 Hz
 Primary: 2 x 115 VAC, +/- 10% (two separate windings)
 Secondary: According to details.
 Isolation: 4 kV RMS
 Temp. class: A (105°)
 Protection: IP00
 According to: BS/EN 61558-1, AS/NZS 61558.1 and BS/EN 61558-2-6, AS/NZS 61558.2.6 or BS/EN 61558-2-4 AS/NZS 61558.2.4 IEC 61558-1, IEC 61558-2-6 or IEC 61558-2-4



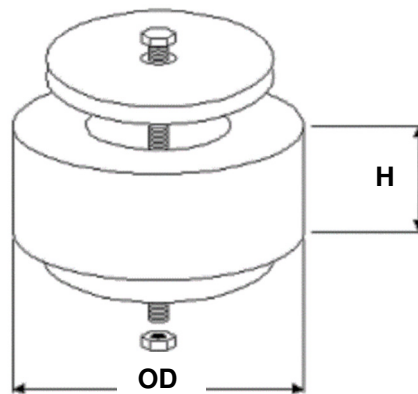
Schematic/connections:



*) The two primary windings have to be connected either in series or in parallel.

Ordering details:

RS Stock number	Power VA	Specification	No-load voltage	According to
5405157	30	2 Output Toroidal Transformer, 6V	6.9	IEC61558-2-6 / EN61558-2-6
5405163	30	2 Output Toroidal Transformer, 9V	10.25	IEC61558-2-6 / EN61558-2-6
5405179	30	2 Output Toroidal Transformer, 12V	13.8	IEC61558-2-6 / EN61558-2-6
5405185	30	2 Output Toroidal Transformer, 15V	17.2	IEC61558-2-6 / EN61558-2-6
5404946	30	2 Output Toroidal Transformer, 18V	20.5	IEC61558-2-6 / EN61558-2-6
5404952	30	2 Output Toroidal Transformer, 25V	28.4	IEC61558-2-4 / EN61558-2-4
5405191	50	2 Output Toroidal Transformer, 6V	6.75	IEC61558-2-6 / EN61558-2-6
5405214	50	2 Output Toroidal Transformer, 9V	10.1	IEC61558-2-6 / EN61558-2-6
5405220	50	2 Output Toroidal Transformer, 12V	13.5	IEC61558-2-6 / EN61558-2-6
5405236	50	2 Output Toroidal Transformer, 15V	16.9	IEC61558-2-6 / EN61558-2-6
5404968	50	2 Output Toroidal Transformer, 18V	20.25	IEC61558-2-6 / EN61558-2-6
5405242	50	2 Output Toroidal Transformer, 25V	28	IEC61558-2-4 / EN61558-2-4
5404974	50	2 Output Toroidal Transformer, 55V	61.5	IEC61558-2-4 / EN61558-2-4

Dimensions:


Power [VA]	Secondary [V]	Overall Size OD x ID x H [mm]	Weight [kg]
30	2x (6, 9, 12, 15, 18, 25)	70 x 32	0.45
50	2x (6, 9, 12, 15, 18, 25, 55)	80 x 34	0.65