

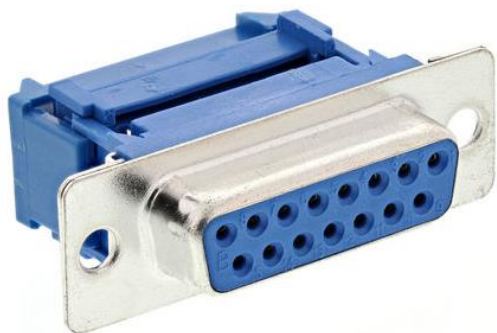


Datasheet

ENGLISH

Stock No: 138-017

RS Pro 2.54mm Pitch 15 Way IDC D-sub Connector, Socket, Metal Shell



Product Details

Commercial 0.05in Pitch Tin Plated

Low profile connectors with bright tin finish and grounding indents for EMI/RFI protection.

Provides high speed mass termination onto flat ribbon cable (26-28awg wire)

Contact rating 1A, contact resistance 15m Ω

Complies with BS9523 & MIL-C-24308 size

With strain relief clamp.

Specifications:

Gender	Female
Number of Contacts	15
Pitch	2.54mm
Contact Plating	Tin
Housing Material	Metal
Current Rating	1A