

APPLICATION GUIDE Switches

CAT. NO.

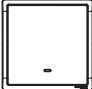



E8231L1F	E8231L2F	E8231L1N
E8232L1F	E8232L2F	E8232L1N
E8233L1F	E8233L2F	E8233L1N
E8234L1F	E8234L2F	E8234L1N

Pieno

MS18629

Thank you for choosing Schneider Electric Pieno's electronic accessories. To ensure proper application of our products, please read through the following information before installation and use.

This application guide applies to the following products.

Cat.no.	Description
 E8231L1F	16AX 250V 1 Gang 1 Way Switch with Fluorescent Locator
E8231L2F	16AX 250V 1 Gang 2 Way Switch with Fluorescent Locator
E8231L1N	16AX 250V 1 Gang 1 Way Switch with Neon
 E8232L1F	16AX 250V 2 Gang 1 Way Switch with Fluorescent Locator
E8232L2F	16AX 250V 2 Gang 2 Way Switch with Fluorescent Locator
E8232L1N	16AX 250V 2 Gang 1 Way Switch with Neon
 E8233L1F	16AX 250V 3 Gang 1 Way Switch with Fluorescent Locator
E8233L2F	16AX 250V 3 Gang 2 Way Switch with Fluorescent Locator
E8233L1N	16AX 250V 3 Gang 1 Way Switch with Neon
 E8234L1F	10AX 250V 4 Gang 1 Way Switch with Fluorescent Locator
E8234L2F	10AX 250V 4 Gang 2 Way Switch with Fluorescent Locator
E8234L1N	10AX 250V 4 Gang 1 Way Switch with Neon

SPECIFICATIONS

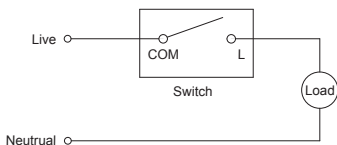
Rated Voltage	: 250V~
Rated Current	: 10AX/16AX
Dimension	: 87mm x 87mm
Mounting Centre	: 60.3mm
Compliance	: GB 16915.1, IEC 60669-1, BSEN 60669-1, MSIEC 60669-1, SS 227-1

IMPORTANT NOTE

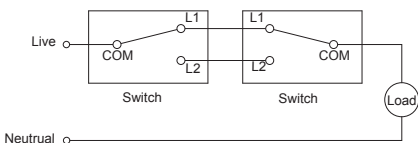
1. The products must be installed by qualified electricians.
2. Please check your local wiring regulations before installation.
3. Safekeeping the faceplate to prevent damage during product installation.
4. Turn off the power supply when you clean the product. Use a soft, slightly-moistened cloth or tissue paper to wipe off the dust and dirt on the surface. Clean with much diluted detergent if necessary but avoid using corrosive chemicals.

WIRING DIAGRAMS

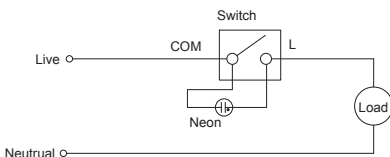
E8231L1F, E8232L1F, E8233L1F & E8234L1F



E8231L2F, E8232L2F, E8233L2F & E8234L2F



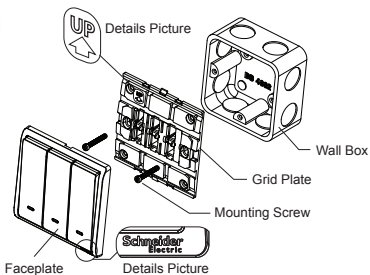
E8231L1N, E8232L1N, E8233L1N & E8234L1N



* Customers have to connect the neon indicator with the circuit at the switch terminals.

MOUNTING INSTRUCTION

1. Connect the wires to the terminals (recommend to leave 10-12mm bare metal wire) and tighten the terminal screws.
2. Screw the grid plate onto the wall box.
3. Snap the faceplate onto the grid plate.



Insert a screwdriver into the clip lock, and twist the screwdriver to remove the faceplate.

