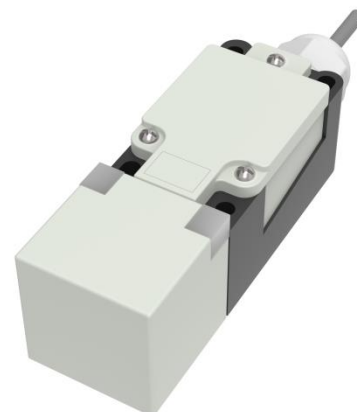


RS PRO Inductive Sensor

RS Stock No.: 2522028

FEATURES

- Non contact detection, safe and reliable;
- ASIC design;
- Perfect choice for metallic target detection;
- Full range specifications optional.



RS Professionally Approved Products bring to you professional quality parts across all product categories. Our product range has been tested by engineers and provides a comparable quality to the leading brands without paying a premium price.

Specifications

Mounting	Non-flush
Rated distance Sn	20mm
Assured distance Sa	0...16mm
Dimensions	40*40*140 mm
Output	NO/NC
Supply voltage	20...250 VAC/DC
Standard target	Fe 60*60*1t
Switch point offset[%/Sr]	≤ ±10%
Hysteresis range [%/Sr]:	1...20%
Repeat accuracy	≤3%
Load current	AC: ≤300mA DC: ≤100mA
Residual voltage	AC: ≤10V DC: ≤8V
Leakage current t[lr]	AC: ≤3mA DC: ≤1mA
Protection circuit:	...
Output indicator:	Power: yellow LED Output: yellow LED
Ambient temperature	-25°C...70°C
Ambient humidity	35-95%RH
Switch frequency	AC:20 Hz, DC: 100 Hz
Voltage withstand	1000V/AC 50/60Hz 60s
Insulation resistance	≥50MΩ(500VDC)
Vibration resistance	10...50Hz(1.5mm)
Housing material	PBT
Connection	Terminal

Protection Category

IP Rating IP67

Additional Information

Custom Tariff Number/HS code 903180

Approvals

Compliance/Certifications CE

Dimension and Wiring