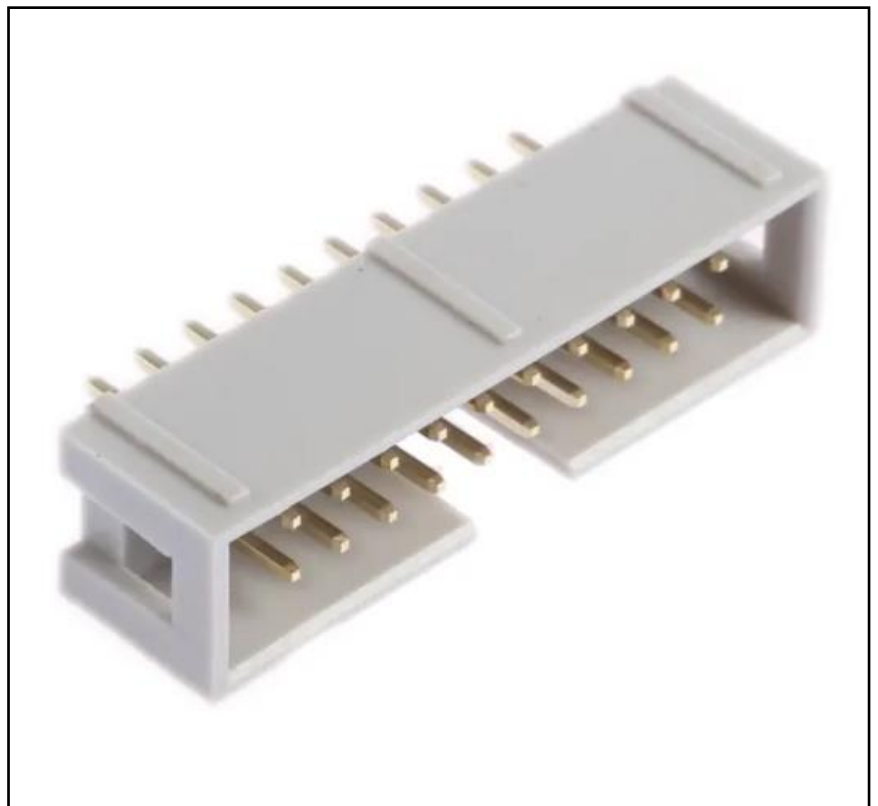


FEATURES

- 20-Way, male IDC connector plug, 2 Row
- Straight orientation
- Through-hole mounting
- Length of 33.05mm
- Solder spill connections suitable for standard 1.6mm PCBs
- Operating temperature range - 45°C to +105°C
- Low-resistance gold-plated contacts
- Current rating of 1 A
- Insulation resistance of 5,000 mΩ a minute at dc 500V

RS PRO, 20 Way, 2 Row, Straight PCB Header

RS Stock No.: 625-7296



RS Professionally Approved Products bring to you professional quality parts across all product categories. Our product range has been tested by engineers and provides a comparable quality to the leading brands without paying a premium price.

Product Description

If you need to connect to a conductor for computing applications, opt for this 20-way, straight IDC connector suitable for through-hole mounting. Don't worry about stripping wires, as it has sharp points that penetrate cables to make contact with the conductor. Use it with standard 1.6 mm thick printed circuit boards (PCBs) as the solder spill connections are on a 0.1 inch grid.

General Specifications

Connector Type	PCB Header
Number of Contacts	20
Number of Rows	2
Gender	Male
Body Orientation	Straight
Contact Material	Copper
Housing Material	30% glass filled PBT UL94V-0 Grey
Shrouded/Unshrouded	Shrouded
Colour	Grey
Applications	Standard 1.6 mm thick printed circuit boards (PCBs)

Electrical Specifications

Current Rating	1A
Termination Method	IDC
Contact Plating	Gold plated over nickel
Insulator Resistance	5000MO min. at DC 500V
Contact Resistance	20MO max. at DC 100mA

Mechanical Specifications

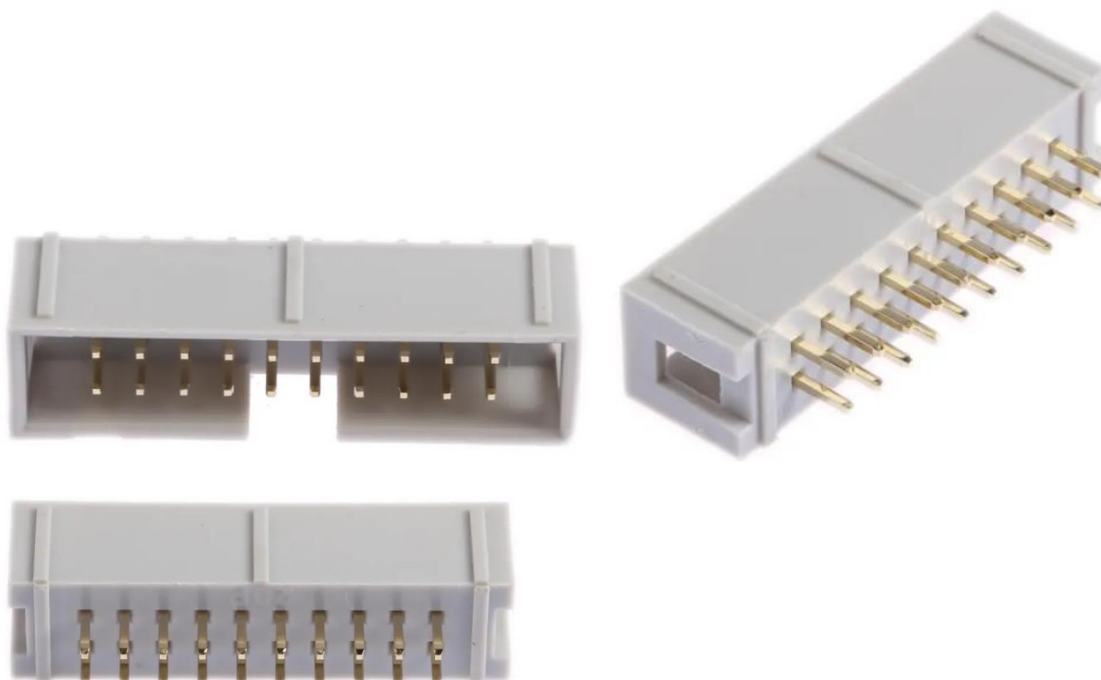
Pitch	2.54mm
Mounting Type	Through Hole
Length	33.05mm

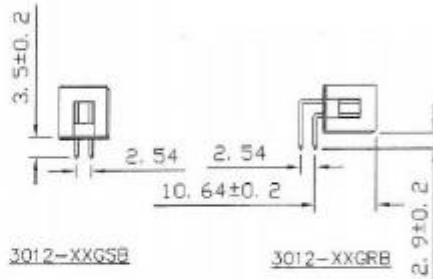
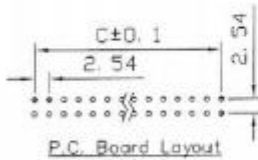
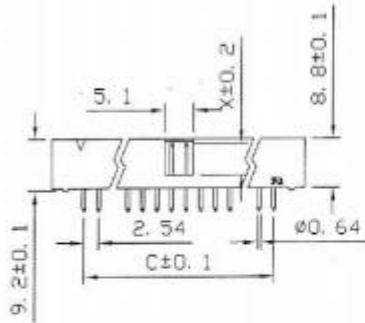
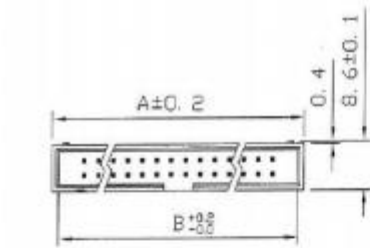
Operation Environment Specifications

Operating Temperature Range	-45°C to +105°C
Minimum Operating Temperature	-45°C
Maximum Operating Temperature	+105°C

Approvals

Standards Met	IDC; BT224, ANSI/ESD S20.20:2014 and BS EN 61340-5-1:2007, RoHS certified, UL94V-0
---------------	--





Position	Dimension		
	A	B	C
10	20.34	18.10	10.16
14	25.48	23.18	15.24
16	27.90	25.72	17.78
20	33.05	30.80	22.86
26	40.68	38.42	30.48
34	50.80	48.58	40.64
40	58.46	56.20	48.26
50	71.10	68.90	60.96
60	83.80	81.60	73.66
64	89.10	86.68	78.74

