



Datasheet

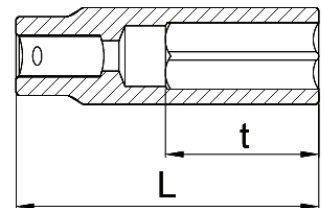
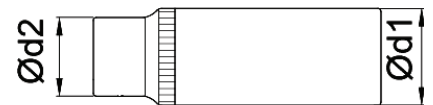
RS Pro 1/4" Drive Hexagon Deep Sockets



EN



Product features:

- DIN 3124, ISO 2725-1
- Ideal for long threaded bolts
- 1/4" Long-reach sockets for long recess or thread access
- Profile enabling high transmission of force to nuts and bolts without damaging the heads.
- Hexagon profile
- Knurled body
- Not suitable for use with airtools
- Chrome Vanadium steel
- Mirror chrome finish



RS CODE NO	 mm	L mm	Ø d1 mm	Ø d2 mm	t mm	
1923740	5	50	7.9	11.7	10.5	19
1923741	5.5	50	8.2	11.7	10.5	19
1923742	6	50	9.2	11.7	10.5	22
1923743	7	50	10.4	11.7	21	22
1923744	8	50	11.7	11.2	21	22
1923745	9	50	13.0	11.9	21	27
1923746	10	50	14.5	12.0	21	33
1923747	11	50	15.8	12.0	21	39
1923748	12	50	16.7	14.0	21	40
1923749	13	50	17.8	15.0	25	49