

1W Isolated DC to DC Converters

Single and Dual Output

multicomp PRO

1W isolated DC-DC converter
Fixed input voltage and unregulated dual/single output

**RoHS
Compliant**



Features

- Continuous short-circuit protection
- No-load input current as low as 5mA
- Operating ambient temperature range: -40°C to +105°C
- High efficiency up to 85%
- I/O isolation test voltage: 3K VDC
- Industry standard pin-out
- SIP package
- IEC62368, UL62368, EN62368 approved

These series are specially designed for applications where an isolated (two isolated) voltage is required in a distributed power supply system. They are suitable for: pure digital circuits, low frequency analog circuits, relay-driven circuits and data switching circuits.

Selection Guide

Part Number	Input Voltage (VDC)	Output		Full Load Efficiency (%) Min./Typ.	Capacitive Load(μF)* Max.
	Nominal (Range)	Voltage (VDC)	Current (mA) Max./Min.		
MPE0503S-1W	5 (4.5 to 5.5)	±3.3	±152/±15	70/74	1200
MPE0505S-1W		±5	±100/±10	78/82	
MPE0512S-1W		±12	±42/±5	79/83	
MPE0515S-1W		±15	±34/±4	79/83	220
MPE0524S-1W		±24	±21/±3	81/85	
MPF0503S-1W		3.3	303/30	70/74	2400
MPF0505S-1W		5	200/20	78/82	
MPF0509S-1W		9	111/12	79/83	
MPF0512S-1W		12	84/9	79/83	560
MPF0515S-1W		15	67/7	79/83	
MPF0524S-1W		24	42/4	81/85	220

Note: *The specified maximum capacitive load for positive and negative output is identical.

Input Specifications

Item	Operating Conditions	Min.	Typ.	Max.	Unit
Input Current (full load / no-load)	3.3VDC/5VDC output	-	270/5	286/10	mA
	9VDC/12VDC output	-	241/12	254/20	
	15VDC/24VDC output	-	241/18	254/30	
Reflected Ripple Current*		-	15	-	
Surge Voltage(1sec. max.)	5 VDC input	-0.7	-	9	V DC
Input Filter		Capacitance filter			
Hot Plug		Unavailable			

Note: * Refer to DC-DC Converter Application Notes for detailed description of reflected ripple current test method.

Newark.com/multicomp-pro
Farnell.com/multicomp-pro
Element14.com/multicomp-pro

multicomp PRO

1W Isolated DC to DC Converters

Single and Dual Output

multicomp PRO

Output Specifications

Item	Operating Conditions		Min.	Typ.	Max.	Unit	
Voltage Accuracy			See output regulation curves (Fig. 1)				
Linear Regulation	Input voltage change: ±1%	3.3 VDC output	-	-	1.5	%	
		Other output		-	1.2		
Load Regulation	10%-100% load	3.3VDC output		15	20		
		5VDC output		10	15		
		9VDC output		8	10		
		12VDC output		7			
		15VDC output		6			
		24VDC output		5			
Ripple & Noise*	20MHz bandwidth	Other output		30	75		mVp-p
		24VDC output		50	100		
Temperature Coefficient	100% load		±0.02	-	%/°C		
Short-Circuit Protection			Continuous, self-recovery				

Note: * The "parallel cable" method is used for Ripple and Noise test, please refer to DC-DC Converter Application Notes for specific information.

General Specifications

Item	Operating Conditions		Min.	Typ.	Max.	Unit
Isolation	Input-output Electric Strength Test for 1 minute with a leakage current of 1mA max.		3000	-	-	VDC
Insulation Resistance	Input-output resistance at 500VDC		1000	-	-	MΩ
Isolation Capacitance	Input-output capacitance at 100kHz/0.1V		-	20	-	pF
Operating Temperature	Derating if the temperature ≥85°C(see Fig. 2)		-40	-	105	°C
Storage Temperature			-55	-	125	
Case Temperature Rise	Ta=25°C	3.3VDC output	-	25	-	
		Others		15		
Pin Soldering Resistance Temperature	Soldering spot is 1.5mm away from case for 10 seconds				300	
Storage Humidity	Non-condensing		-	-	95	%RH
Switching Frequency	100% load, nominal input voltage		-	270	-	kHz
MTBF	MIL-HDBK-217F@25°C		3500	-	-	k hours

Note: * For actual application, please refer to IPC/JEDEC J-STD-020D.1.

Mechanical Specifications

Case Material	Black plastic; flame-retardant and heat-resistant (UL94 V-0)
Dimensions	19.65 x 6.00 x 10.16mm
Weight	2.1g(Typ.)
Cooling Method	Free air convection

1W Isolated DC to DC Converters Single and Dual Output

multicomp PRO

Electromagnetic Compatibility (EMC)

Emissions	CE	CISPR32/EN55032 CLASS B (see Fig. 4 for recommended circuit)
	RE	CISPR32/EN55032 CLASS B (see Fig. 4 for recommended circuit)
Immunity	ESD	IEC/EN61000-4-2 Air $\pm 8kV$, Contact $\pm 4kV$ perf. Criteria B

Typical Performance Curves

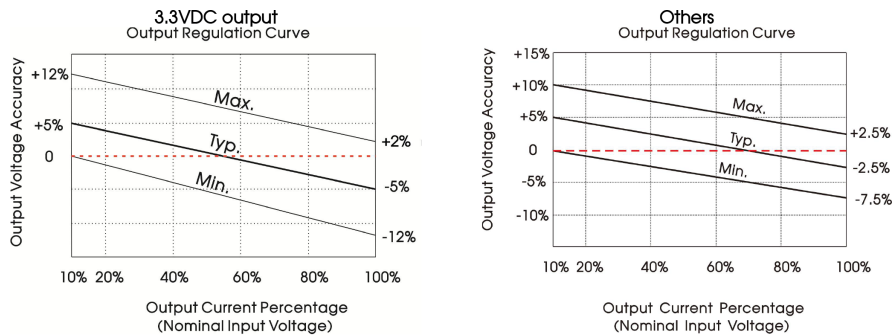


Fig. 1

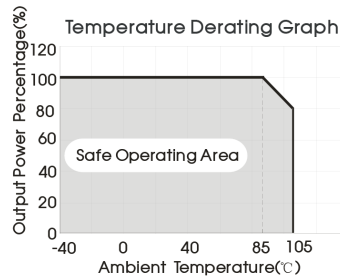
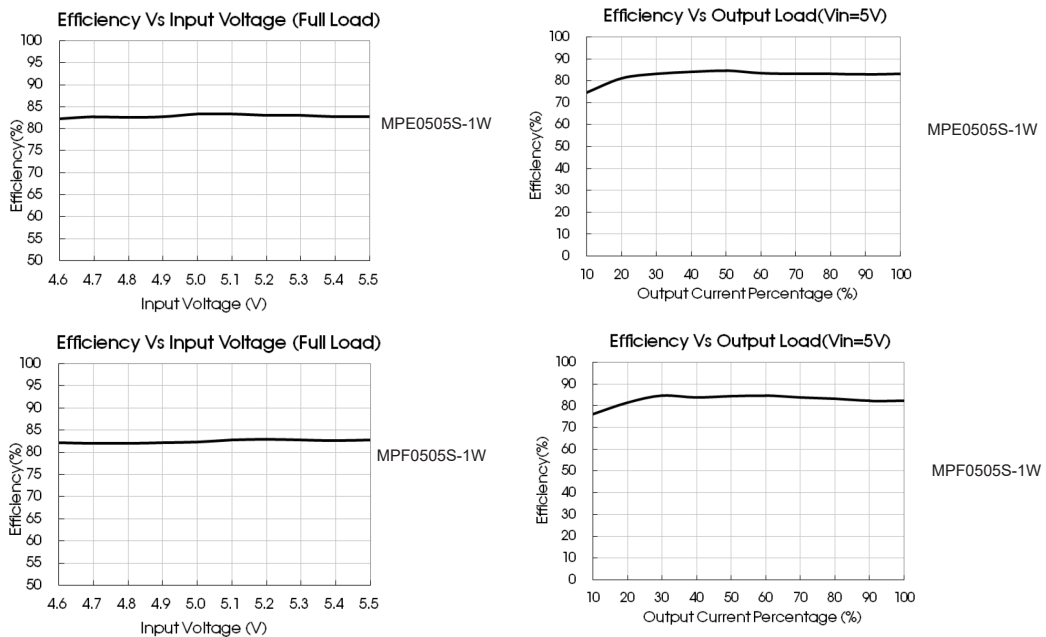


Fig. 2



1W Isolated DC to DC Converters

Single and Dual Output

Design Reference

Typical application

Input and/or output ripple can be further reduced, by connecting a filter capacitor from the input and/or output terminals to ground as shown in Fig. 3.

Choosing suitable filter capacitor values is very important for a smooth operation of the modules, particularly to avoid start-up problems caused by capacitor values that are too high. For recommended input and output capacitor values refer to Table 1.

Dual Output



Single Output



Fig. 3

Recommended capacitive load value table (Table 1)

Vin (VDC)	Cin (μF)	Single output (VDC)	Cout (μF)	Dual output (VDC)	Cout (μF)
5	4.7	3.3/5	10	±3.3/±5	4.7
--	--	9/12	2.2	±9/±12	1
--	--	15/24	1	±15/±24	0.47

EMC (CLASS B) compliance circuit

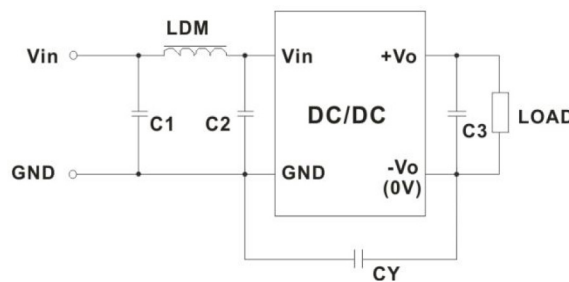


Fig. 4

EMC recommended circuit value table (Table 2)

Input voltage 5VDC	Output voltage (VDC)		3.3/5/9	12/15/24
	EMI	C1/C2	4.7μF /25V	
CY		-		1nF/4KVDC VISHAY HGZ102MBP TDK CD45-E2GA102M-GKA
C3			Refer to the Cout in table 1	
LDM		6.8μH	6.8μH	

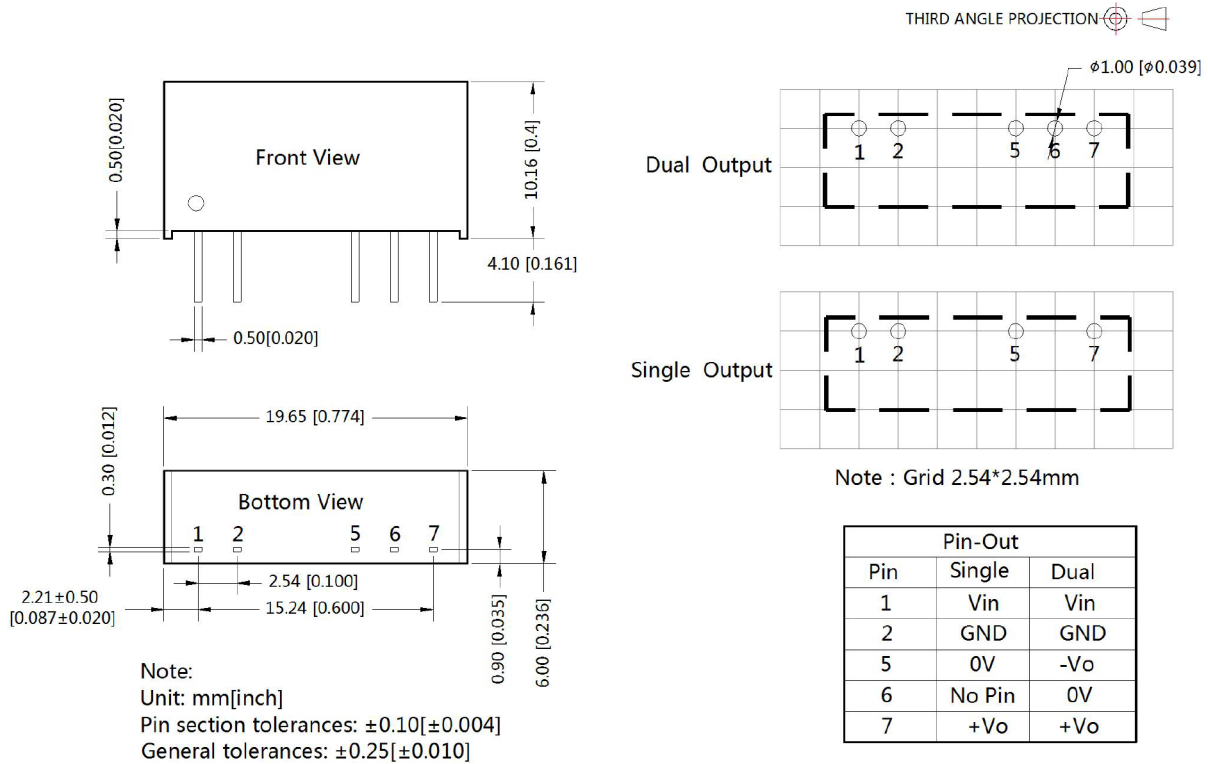
Note: In the case of actual use, the requirements for EMI are high, it is subject to CY (CY:1nF/4KV).

1W Isolated DC to DC Converters

Single and Dual Output

multicomp PRO

Dimensions and Recommended Layout



Notes:

1. If the product is not operated within the required load range, the product performance cannot be guaranteed to comply with all parameters in the datasheet;
2. The maximum capacitive load offered were tested at input voltage range and full load;
3. Unless otherwise specified, parameters in this datasheet were measured under the conditions of Ta=25°C , humidity<75%RH with nominal input voltage and rated output load;
4. All index testing methods in this datasheet are based on our company corporate standards;
5. We can provide product customization service, please contact our technicians directly for specific information;
6. Products are related to laws and regulations: see "Features" and "EMC";
7. Our products shall be classified according to ISO14001 and related environmental laws and regulations, and shall be handled by qualified units.

Important Notice : This data sheet and its contents (the "Information") belong to the members of the AVNET group of companies (the "Group") or are licensed to it. No licence is granted for the use of it other than for information purposes in connection with the products to which it relates. No licence of any intellectual property rights is granted. The Information is subject to change without notice and replaces all data sheets previously supplied. The Information supplied is believed to be accurate but the Group assumes no responsibility for its accuracy or completeness, any error in or omission from it or for any use made of it. Users of this data sheet should check for themselves the Information and the suitability of the products for their purpose and not make any assumptions based on information included or omitted. Liability for loss or damage resulting from any reliance on the Information or use of it (including liability resulting from negligence or where the Group was aware of the possibility of such loss or damage arising) is excluded. This will not operate to limit or restrict the Group's liability for death or personal injury resulting from its negligence. Multicomp Pro is the registered trademark of Premier Farnell Limited 2019.

Newark.com/multicomp-pro
 Farnell.com/multicomp-pro
 Element14.com/multicomp-pro

multicomp PRO