

Thank you for choosing **Schneider Electric** AvatarOn series products. To ensure proper application of our product, please read through the following information before installation and use.

This application guide applies to the following products.

(Notes: suffix_WE/WG/GH/LW/WD/ST_C5/G2 etc. mean the colors and sales areas)

Cat. No.	Description
E8330X	1G Blank Plate
E8330TX	Twin Gang Blank Plate

SPECIFICATIONS

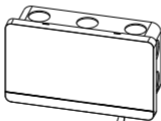
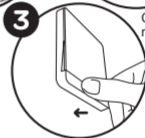
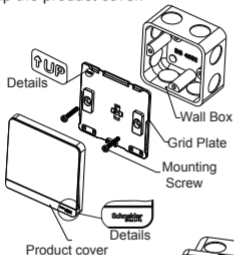
Mounting centre	: 60.3mm/120.6mm
Compliance	: BS5733,IEC 60670

IMPORTANT NOTE

1. The products must be installed by qualified electricians.
2. Please check your local wiring regulations before installation.
3. Please use the standard 86 size wallbox.
4. Safekeeping the cover to prevent damage during product installation.
5. Turn off the power supply when you clean the product. Use a piece of soft, slightly-moistened cloth or tissue paper to wipe off the dust and dirt on the surface. Avoid using corrosive chemicals.

MOUNTING INSTRUCTION

1. Remove the product cover and safekeeping .
2. Connect the wires to the terminals (recommend to leave 10-12mm bare metal wire) and tighten the terminal screws.
3. Screw the grid plate onto the wall box.
4. Snap the product cover.



Insert a screwdriver into the clip lock, and twist the screwdriver to remove the product cover(Twin Gang) .