

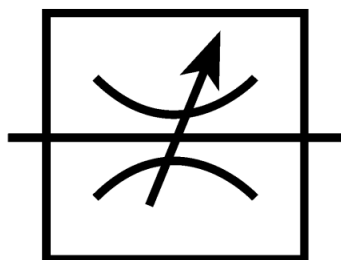
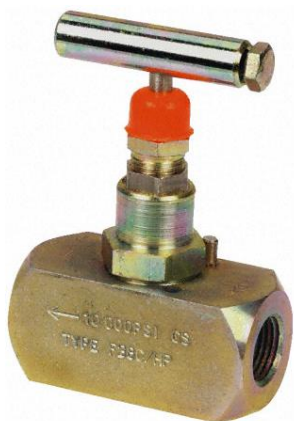


ENGLISH

## Datasheet

Stock No: 297-5934

# RS Pro Pro Line Mounting Hydraulic Flow Control Valve, NPT 3/8, 700 bar



Double acting

## Product Details

### Isolator Needle Valves

These high pressure isolator needle valves, available in BSP and NPT thread forms, are designed to shut off and control the flow in both directions.

### Flow Control Valves

Single acting and double acting in-line flow control valves. Single acting valves allow flow control in one direction and free flow in the opposite direction. Double acting valves allow flow control in both directions.



ENGLISH

## Specifications:

Manufacturer Series	F
Connection Port Thread	NPT 3/8
Maximum Flow Rate	40L/min
Body Material	Carbon Steel
Seal Material	PTFE
Maximum Operating Pressure	700 bar
Thread Size	3/8 in
Thread Standard	NPT
Maximum Operating Temperature	+240°C
Minimum Operating Temperature	-20°C