

ELECTRON PRODUCTS INC.

METALLIZED MYLAR CAPACITORS

ENGINEERING DATA SHEET

SERIES **D**

New Flame Retardant Styles Available

ENVIRONMENTAL DATA

APPLICATIONS

Series D Metallized Mylar capacitors are superior general purpose capacitors for both AC and DC applications. They are dry-section, non-polar, non-inductive wound capacitors with high volumetric efficiency and a low cost.

Series D Capacitors come in several styles: Oval Wrap & Fill; Round Wrap & Fill (DC Style); Axial Epoxy Case (DE Style); Radial Epoxy Case (D2E Style); Rectangular Hermetically Sealed (DG Style); Round Hermetically Sealed (DL Style); Round Wrapped Feed-Through (DQ Style). They are available in several sizes including Regular as well as custom sizes to meet specific customer requirements.

Contact our Engineering Department for special sizes, configurations, capacitance values and AC applications with Anti-Corona construction at all frequencies. Custom metal enclosures are available. Custom designed Feed Through capacitors (DQ Style) are also available for filter applications to specific requirements.

OPERATING TEMPERATURE RANGE

Range: -55°C to +125°C, with voltage derating.

LIFE TEST

Series D capacitors shall be capable of withstanding a test of 1000 hours at +125°C and 100% of the derated DC voltage or a test of 250 hours at +125°C and 140% of the derated DC voltage. The voltage shall be applied to each capacitor through its individual current-limiting resistor as determined from the formula $R = 0.025/C$, where C is the nominal capacitance in farads and R is in ohms.

The test procedures shall be in accordance with MIL-C-18312, except as noted herein. Not more than one failure in twelve shall be permitted. Any one of the following shall be considered a failure.

- A change in capacitance of more than 10% from its initial value.
- An increase in Dissipation Factor to a value greater than 125% of the acceptance limit.
- A decrease in Insulation Resistance to a value less than 30% of the acceptance limit for +25°C.
- A permanent short or open.

VIBRATION

Series D capacitors shall be capable of withstanding a vibration test in accordance with MIL-STD-202, Method 201. The following details and exceptions shall apply:

a. **Mounting.** The capacitor body shall be rigidly mounted by the entire body length to the vibration test fixture. The leads shall be soldered to rigidly supported terminals and so spaced that the length of each lead from the capacitor is $1/2 \pm 1/8$ inch from the edge of the supporting terminal.

b. **Measurement during Vibration.** During the last cycle in each direction, an electrical measurement shall be made to detect intermittent contacts (not to be confused with "self healing" clearings) or open or short circuiting.

c. **Examination After Vibration.** Capacitors shall be visibly examined for evidence of mechanical damage.

MOISTURE RESISTANCE

Series D capacitor Styles DG and DL (Hermetically Sealed in metal containers) as well as Metal Can Styles shall be capable of withstanding the moisture resistance, humidity, and temperature and immersion cycling or MIL-C-18312. Styles DE and D2E (Epoxy Case), Styles D and DC (Wrap & Fill) and DQ (Feed-Through) capacitors are not intended for exposure to high humidity conditions over extended periods of time.

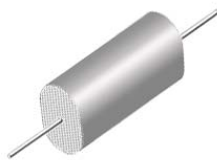
TERMINAL STRENGTH

Series D capacitors utilize tin-plated, copper-clad steel wire terminals which shall be capable of withstanding the following test without mechanical damage to the capacitor or terminals:

a. **Pull Test.** The capacitor shall withstand a steady pull of 5 pounds axially to the leads for 1 minute.

b. **Bend Test.** The wire lead terminals shall be bent at a point of 1/4 inch from the body of the capacitor, first 90 degrees in one direction, then back to the original position, and then 90 degrees in the opposite direction.

METALLIZED MYLAR WRAP AND FILL, OVAL AXIAL LEAD CAPACITORS



D
METALLIZED MYLAR
WRAP & FILL, OVAL
REGULAR SERIES

ORDERING DESCRIPTION

Capacitor, fixed: Metallized Mylar dielectric; extended foil construction; tin-plated copper-clad steel wire axial leads; encased in skin-tight plastic wrap with epoxy end fill. In addition to the standard Tape, New Flame Retardant Tape is available meeting UL 510 Flame Retardant Specifications.

APPLICATION NOTES

Wrap & Fill capacitors are not intended for exposure to high humidity conditions over extended periods of time. For stringent environmental conditions, Wrap & Fill capacitors should be used in encapsulated or hermetically sealed circuitry. For UL 510 Flame Retardant Tape add -R to the end of the Part Number.

SELECTION AND ORDERING TABLES Select voltage rating, capacitance and tolerance, read Part Number to the right.

MFD	35VDC 20VAC				50VDC 40VAC				100VDC 70VAC				200VDC 120VAC							
	T		W		L		PART #	T		W		L		PART #	T		W		L	PART #
	+ .05"	± .05"	+ .05"	± .05"	+ .05"	± .05"		+ .05"	± .05"	+ .05"	± .05"	+ .05"	± .05"		+ .05"	± .05"	+ .05"	± .05"		
.001	.09	.18	.40	D.35-102E	.09	.18	.40	D.5-102E	.09	.18	.40	D1-102E	.09	.18	.40	D2-102E				
.0027	.09	.18	.40	D.35-272E	.09	.18	.40	D.5-272E	.09	.18	.40	D1-272E	.09	.18	.40	D2-272E				
.0033	.09	.18	.40	D.35-332E	.09	.18	.40	D.5-332E	.09	.18	.40	D1-332E	.09	.18	.40	D2-332E				
.0056	.09	.18	.40	D.35-562E	.09	.18	.40	D.5-562E	.09	.18	.40	D1-562E	.09	.18	.40	D2-562E				
.0068	.09	.18	.40	D.35-682E	.09	.18	.40	D.5-682E	.09	.18	.40	D1-682E	.09	.18	.40	D2-682E				
.0082	.09	.18	.40	D.35-822E	.09	.18	.40	D.5-822E	.09	.18	.40	D1-822E	.09	.18	.40	D2-822E				
.01	.09	.18	.40	D.35-103E	.09	.18	.40	D.5-103E	.09	.18	.40	D1-103E	.15	.26	.40	D2-103E				
.012	.09	.18	.40	D.35-123E	.09	.18	.40	D.5-123E	.09	.18	.40	D1-123E	.15	.26	.40	D2-123E				
.015	.09	.18	.40	D.35-153E	.09	.18	.40	D.5-153E	.09	.18	.40	D1-153E	.15	.26	.40	D2-153E				
.018	.09	.18	.40	D.35-183E	.09	.18	.40	D.5-183E	.09	.18	.40	D1-183E	.15	.26	.40	D2-183E				
.022	.09	.18	.40	D.35-223E	.09	.18	.40	D.5-223E	.09	.18	.40	D1-223E	.15	.26	.40	D2-223E				
.027	.09	.18	.40	D.35-273E	.09	.18	.40	D.5-273E	.09	.18	.40	D1-273E	.15	.28	.40	D2-273E				
.033	.09	.18	.40	D.35-333E	.09	.18	.40	D.5-333E	.10	.21	.40	D1-333E	.15	.28	.40	D2-333E				
.039	.09	.18	.40	D.35-393E	.09	.18	.40	D.5-393E	.10	.23	.40	D1-393E	.15	.28	.40	D2-393E				
.047	.09	.18	.40	D.35-473E	.09	.18	.40	D.5-473E	.11	.24	.40	D1-473E	.15	.28	.40	D2-473E				
.056	.09	.18	.40	D.35-563E	.09	.19	.40	D.5-563E	.13	.25	.40	D1-563E	.16	.29	.53	D2-563E				
.068	.09	.18	.40	D.35-683E	.10	.20	.40	D.5-683E	.14	.27	.40	D1-683E	.17	.30	.53	D2-683E				
.082	.09	.18	.40	D.35-823E	.11	.21	.40	D.5-823E	.09	.22	.53	D1-823E	.18	.31	.53	D2-823E				
.10	.09	.18	.40	D.35-104E	.13	.22	.40	D.5-104E	.11	.24	.53	D1-104E	.22	.35	.53	D2-104E				
.12	.09	.18	.40	D.35-124E	.14	.24	.40	D.5-124E	.13	.26	.53	D1-124E	.23	.35	.53	D2-124E				
.15	.09	.18	.40	D.35-154E	.11	.21	.53	D.5-154E	.15	.28	.53	D1-154E	.21	.34	.65	D2-154E				
.18	.10	.20	.40	D.35-184E	.12	.22	.53	D.5-184E	.17	.30	.53	D1-184E	.24	.35	.65	D2-184E				
.22	.11	.22	.40	D.35-224E	.13	.23	.53	D.5-224E	.19	.32	.53	D1-224E	.25	.35	.65	D2-224E				
.25	.12	.22	.40	D.35-254E	.14	.24	.53	D.5-254E	.16	.29	.65	D1-254E	.24	.37	.78	D2-254E				
.27	.13	.22	.40	D.35-274E	.15	.25	.53	D.5-274E	.17	.30	.65	D1-274E	.25	.38	.78	D2-274E				
.33	.15	.24	.40	D.35-334E	.17	.26	.53	D.5-334E	.19	.32	.65	D1-334E	.28	.41	.78	D2-334E				
.39	.16	.25	.40	D.35-394E	.18	.28	.53	D.5-394E	.17	.30	.78	D1-394E	.30	.43	.78	D2-394E				
.47	.18	.28	.40	D.35-474E	.20	.30	.53	D.5-474E	.19	.32	.78	D1-474E	.32	.45	.78	D2-474E				
.50	.11	.21	.53	D.35-504E	.21	.31	.53	D.5-504E	.20	.33	.78	D1-504E	.33	.46	.78	D2-504E				
.56	.12	.22	.53	D.35-564E	.22	.32	.53	D.5-564E	.21	.34	.78	D1-564E	.31	.44	.97	D2-564E				
.68	.13	.23	.53	D.35-684E	.25	.35	.53	D.5-684E	.23	.36	.78	D1-684E	.33	.46	.97	D2-684E				
.75	.14	.24	.53	D.35-754E	.26	.36	.53	D.5-754E	.26	.36	.78	D1-754E	.35	.48	.97	D2-754E				
.82	.15	.24	.53	D.35-824E	.22	.31	.65	D.5-824E	.27	.38	.78	D1-824E	.33	.46	1.17	D2-824E				
1.0	.17	.26	.53	D.35-105E	.24	.34	.65	D.5-105E	.25	.36	.97	D1-105E	.36	.49	1.17	D2-105E				
1.2	.19	.28	.53	D.35-125E	.21	.33	.78	D.5-125E	.27	.39	.97	D1-125E	.26	.46	1.68	D2-125E				
1.5	.22	.31	.53	D.35-155E	.24	.36	.78	D.5-155E	.31	.42	.97	D1-155E	.31	.53	1.68	D2-155E				
1.8	.25	.34	.53	D.35-185E	.30	.36	.78	D.5-185E	.33	.49	.97	D1-185E	.35	.57	1.68	D2-185E				
2.0	.26	.35	.53	D.35-205E	.31	.39	.78	D.5-205E	.34	.50	.97	D1-205E	.37	.59	1.68	D2-205E				
3.0	.25	.35	.65	D.35-305E	.31	.43	.97	D.5-305E	.37	.53	1.17	D1-305E	.47	.69	1.68	D2-305E				
4.0	.25	.35	.78	D.35-405E	.31	.43	1.17	D.5-405E	.35	.51	1.68	D1-405E	.58	.79	1.68	D2-405E				
5.0	.28	.38	.78	D.35-505E	.34	.46	1.17	D.5-505E	.38	.54	1.68	D1-505E	.64	.85	1.68	D2-505E				
6.0	.31	.42	.78	D.35-605E	.37	.52	1.17	D.5-605E	.40	.56	2.00	D1-605E	.70	.91	1.68	D2-605E				
8.0	.32	.42	.97	D.35-805E	.44	.56	1.17	D.5-805E	.45	.61	2.00	D1-805E	.79	1.03	1.68	D2-805E				
10.0	.37	.46	.97	D.35-106E	.50	.62	1.17	D.5-106E	.51	.67	2.00	D1-106E	.85	1.18	1.68	D2-106E				
12.0	.30	.48	1.17	D.35-126E	.55	.69	1.17	D.5-126E	.56	.72	2.00	D1-126E	.82	1.06	2.25	D2-126E				
15.0	.35	.51	1.17	D.35-156E	.48	.60	1.68	D.5-156E	.60	.82	2.00	D1-156E	.91	1.15	2.25	D2-156E				
20.0	.41	.57	1.17	D.35-206E	.52	.76	1.68	D.5-206E	.67	.91	2.00	D1-206E	1.07	1.30	2.25	D2-206E				
30.0	.52	.69	1.17	D.35-306E	.64	.88	1.68	D.5-306E	.82	1.06	2.00	D1-306E	1.31	1.55	2.25	D2-306E				
40.0	.61	.78	1.17	D.35-406E	.73	.97	1.68	D.5-406E	.95	1.19	2.00	D1-406E	1.27	1.51	3.25	D2-406E				
50.0	.60	.77	1.45	D.35-506E	.82	1.06	1.68	D.5-506E	1.06	1.30	2.00	D1-506E	1.41	1.65	3.25	D2-506E				
75.0	.67	.84	1.68	D.35-756E	1.01	1.25	1.68	D.5-756E	1.31	1.55	2.00	D1-756E	1.73	1.97	3.25	D2-756E				
100.0	.65	.83	2.25	D.35-107E	1.17	1.41	1.68	D.5-107E	1.52	1.76	2.00	D1-107E	1.99	2.23	3.25	D2-107E				

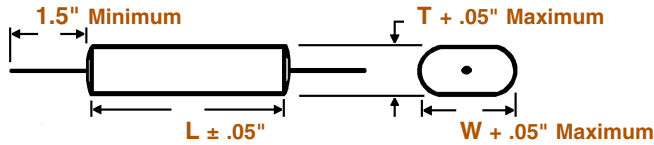
Note: Replace the last digit **E** with the desired tolerance code from the tolerance table. For an in-between value use the next larger value's dimensions. Custom sizes are readily available. All dimensions are in inches. All +.05" dimension tolerances are Maximum.

METALLIZED MYLAR WRAP AND FILL, OVAL AXIAL LEAD CAPACITORS



DIMENSIONS See tables for specific T, W, L values.

WIRE SIZE (Length 1.5" Minimum)



BODY LENGTH (L)	WIRE SIZE	
	AWG No.	Diameter
≤ 0.65"	24	0.020"
> 0.65" ≤ 1.00"	22	0.025"
> 1.00"	20	0.032"

For UL 510 Flame Retardant Tape add -R to the end of Part Number.

SELECTION AND ORDERING TABLES Select voltage rating, capacitance and tolerance, read Part Number to the right.

MFD	400VDC 160VAC				600VDC 230VAC				1000VDC 360VAC				2000VDC 700VAC				
	RATING	T	W	L	PART #	T	W	L	PART #	T	W	L	PART #	T	W	L	PART #
		+ .05"	+ .05"	± .05"		+ .05"	+ .05"	± .05"		+ .05"	+ .05"	± .05"		+ .05"	+ .05"	± .05"	
.001	.09	.18	.40	D4-102E	.09	.18	.40	D6-102E	.14	.23	.97	D10-102E	.14	.23	.97	D20-102E	
.0012	.09	.18	.40	D4-122E	.09	.18	.40	D6-122E	.14	.23	.97	D10-122E	.14	.23	.97	D20-122E	
.0015	.09	.18	.40	D4-152E	.09	.18	.40	D6-152E	.14	.23	.97	D10-152E	.14	.23	.97	D20-152E	
.0018	.09	.18	.40	D4-182E	.09	.18	.40	D6-182E	.14	.23	.97	D10-182E	.14	.23	.97	D20-182E	
.0022	.09	.18	.40	D4-222E	.09	.18	.40	D6-222E	.15	.24	.97	D10-222E	.16	.25	.97	D20-222E	
.0027	.09	.18	.40	D4-272E	.09	.18	.40	D6-272E	.15	.24	.97	D10-272E	.17	.26	.97	D20-272E	
.0033	.09	.18	.40	D4-332E	.09	.18	.40	D6-332E	.15	.24	.97	D10-332E	.19	.28	.97	D20-332E	
.0039	.09	.18	.40	D4-392E	.09	.18	.40	D6-392E	.15	.24	.97	D10-392E	.21	.30	.97	D20-392E	
.0047	.09	.18	.40	D4-472E	.09	.18	.40	D6-472E	.16	.25	.97	D10-472E	.23	.32	.97	D20-472E	
.0056	.09	.18	.40	D4-562E	.10	.19	.40	D6-562E	.16	.25	.97	D10-562E	.25	.34	.97	D20-562E	
.0068	.09	.18	.40	D4-682E	.11	.20	.40	D6-682E	.16	.25	.97	D10-682E	.28	.37	.97	D20-682E	
.0082	.09	.18	.40	D4-822E	.13	.26	.40	D6-822E	.16	.25	.97	D10-822E	.30	.39	.97	D20-822E	
.01	.15	.26	.40	D4-103E	.13	.26	.53	D6-103E	.17	.26	.97	D10-103E	.34	.43	.97	D20-103E	
.012	.14	.27	.53	D4-123E	.14	.27	.53	D6-123E	.19	.28	.97	D10-123E	.37	.46	.97	D20-123E	
.015	.15	.28	.53	D4-153E	.16	.29	.53	D6-153E	.21	.30	.97	D10-153E	.41	.50	.97	D20-153E	
.018	.15	.28	.53	D4-183E	.18	.31	.53	D6-183E	.23	.32	.97	D10-183E	.45	.54	.97	D20-183E	
.022	.15	.28	.53	D4-223E	.20	.33	.53	D6-223E	.25	.34	.97	D10-223E	.27	.51	1.31	D20-223E	
.027	.17	.30	.53	D4-273E	.23	.35	.53	D6-273E	.28	.37	.97	D10-273E	.31	.55	1.31	D20-273E	
.033	.18	.31	.53	D4-333E	.19	.32	.65	D6-333E	.31	.40	.97	D10-333E	.35	.59	1.31	D20-333E	
.039	.21	.34	.53	D4-393E	.21	.34	.65	D6-393E	.33	.42	.97	D10-393E	.39	.62	1.31	D20-393E	
.047	.22	.35	.53	D4-473E	.25	.35	.65	D6-473E	.36	.45	.97	D10-473E	.43	.67	1.31	D20-473E	
.056	.23	.35	.53	D4-563E	.22	.35	.78	D6-563E	.40	.49	.97	D10-563E	.47	.71	1.31	D20-563E	
.068	.24	.35	.53	D4-683E	.25	.38	.78	D6-683E	.44	.53	.97	D10-683E	.53	.77	1.31	D20-683E	
.082	.25	.34	.65	D4-823E	.27	.40	.78	D6-823E	.26	.50	1.31	D10-823E	.46	.70	1.68	D20-823E	
.10	.25	.35	.65	D4-104E	.30	.43	.78	D6-104E	.30	.54	1.31	D10-104E	.51	.75	1.68	D20-104E	
.12	.23	.36	.78	D4-124E	.33	.46	.78	D6-124E	.33	.57	1.31	D10-124E	.58	.82	1.68	D20-124E	
.15	.26	.39	.78	D4-154E	.32	.45	.97	D6-154E	.37	.61	1.31	D10-154E	.66	.90	1.68	D20-154E	
.18	.29	.42	.78	D4-184E	.35	.48	.97	D6-184E	.42	.66	1.31	D10-184E	.72	.96	1.68	D20-184E	
.22	.31	.44	.78	D4-224E	.33	.46	1.17	D6-224E	.47	.71	1.31	D10-224E	.82	1.06	1.68	D20-224E	
.25	.34	.47	.78	D4-254E	.36	.49	1.17	D6-254E	.50	.74	1.31	D10-254E	.88	1.13	1.68	D20-254E	
.27	.35	.48	.78	D4-274E	.38	.51	1.17	D6-274E	.53	.77	1.31	D10-274E	.92	1.16	1.68	D20-274E	
.33	.32	.44	.97	D4-334E	.42	.55	1.17	D6-334E	.46	.70	1.68	D10-334E	1.05	1.29	1.68	D20-334E	
.39	.31	.44	1.17	D4-394E	.45	.60	1.17	D6-394E	.51	.75	1.68	D10-394E	.85	1.10	2.50	D20-394E	
.47	.35	.48	1.17	D4-474E	.50	.65	1.17	D6-474E	.56	.80	1.68	D10-474E	.95	1.19	2.50	D20-474E	
.50	.36	.49	1.17	D4-504E	.51	.67	1.17	D6-504E	.58	.82	1.68	D10-504E					
.56	.38	.52	1.17	D4-564E	.43	.59	1.68	D6-564E	.62	.86	1.68	D10-564E					
.68	.42	.55	1.17	D4-684E	.47	.63	1.68	D6-684E	.69	.93	1.68	D10-684E					
.75	.44	.57	1.17	D4-754E	.49	.65	1.68	D6-754E	.73	.97	1.68	D10-754E					
.82	.46	.59	1.17	D4-824E	.53	.69	1.68	D6-824E	.77	1.01	1.68	D10-824E					
1.0	.52	.65	1.17	D4-105E	.59	.75	1.68	D6-105E	.86	1.10	1.68	D10-105E					
1.2	.40	.62	1.68	D4-125E	.66	.83	1.68	D6-125E	.73	.97	2.50	D10-125E					
1.5	.45	.67	1.68	D4-155E	.73	.90	1.68	D6-155E	.80	1.04	2.50	D10-155E					
1.8	.51	.72	1.68	D4-185E	.79	1.00	1.68	D6-185E	.89	1.13	2.50	D10-185E					
2.0	.54	.76	1.68	D4-205E	.83	1.04	1.68	D6-205E	.94	1.18	2.50	D10-205E					
3.0	.68	.90	1.68	D4-305E	1.02	1.19	1.68	D6-305E	1.17	1.41	2.50	D10-305E					
4.0	.79	1.02	1.68	D4-405E	1.02	1.20	2.25	D6-405E	1.36	1.60	2.50	D10-405E					
5.0	.90	1.13	1.68	D4-505E	1.13	1.34	2.25	D6-505E	1.53	1.77	2.50	D10-505E					
6.0	.78	1.12	2.25	D4-605E	1.24	1.48	2.25	D6-605E	1.69	1.93	2.50	D10-605E					
8.0	.90	1.24	2.25	D4-805E	1.42	1.66	2.25	D6-805E	1.70	1.94	3.25	D10-805E					
10.0	1.11	1.34	2.25	D4-106E	1.58	1.82	2.25	D6-106E	1.90	2.14	3.25	D10-106E					
12.0	1.17	1.41	2.25	D4-126E	1.72	1.96	2.25	D6-126E	2.08	2.32	3.25	D10-126E					
15.0	1.30	1.54	2.25	D4-156E	1.92	2.16	2.25	D6-156E	2.33	2.57	3.25	D10-156E					

TOLERANCE TABLE

Code Tolerance

- A = ± 1% ♦
- B = ± 2% ♦
- C = ± 3% ♦
- D = ± 5%
- E = ± 10%
- None = ± 20%
- ♦ = Temperature Stabilized

Note: Replace the last digit **E** with the desired tolerance code from the tolerance table. For an in-between value use the next larger value's dimensions. Custom sizes are readily available. All dimensions are in inches. All +.05" dimension tolerances are Maximum.

METALLIZED MYLAR WRAP AND FILL, ROUND AXIAL LEAD CAPACITORS



DC
METALLIZED MYLAR
WRAP & FILL, ROUND
REGULAR SERIES

ORDERING DESCRIPTION

Capacitor, fixed: Metallized Mylar dielectric; extended foil construction; tin-plated copper-clad steel wire axial leads; encased in skin-tight plastic wrap with epoxy end fill. In addition to the standard Tape, New Flame Retardant Tape is available meeting UL 510 Flame Retardant Specifications.

APPLICATION NOTES

Wrap & Fill capacitors are not intended for exposure to high humidity conditions over extended periods of time. For stringent environmental conditions, Wrap & Fill capacitors should be used in encapsulated or hermetically sealed circuitry. For UL 510 Flame Retardant Tape add -R to the end of the Part Number.

SELECTION AND ORDERING TABLES Select voltage rating, capacitance and tolerance, read Part Number to the right.

MFD	35VDC 20VAC			50VDC 40VAC			100VDC 70VAC			200VDC 120VAC		
	RATING	D	L	PART #	D	L	PART #	D	L	PART #	D	L
	+ .05"	± .05"		+ .05"	± .05"		+ .05"	± .05"		+ .05"	± .05"	
.001	.15	.40	DC.35-102E	.15	.40	DC.5-102E	.15	.40	DC1-102E	.15	.40	DC2-102E
.0027	.15	.40	DC.35-272E	.15	.40	DC.5-272E	.15	.40	DC1-272E	.15	.40	DC2-272E
.0033	.15	.40	DC.35-332E	.15	.40	DC.5-332E	.15	.40	DC1-332E	.15	.40	DC2-332E
.0056	.15	.40	DC.35-562E	.15	.40	DC.5-562E	.15	.40	DC1-562E	.15	.40	DC2-562E
.0068	.15	.40	DC.35-682E	.15	.40	DC.5-682E	.15	.40	DC1-682E	.15	.40	DC2-682E
.0082	.15	.40	DC.35-822E	.15	.40	DC.5-822E	.15	.40	DC1-822E	.15	.40	DC2-822E
.01	.15	.40	DC.35-103E	.15	.40	DC.5-103E	.15	.40	DC1-103E	.16	.40	DC2-103E
.012	.15	.40	DC.35-123E	.15	.40	DC.5-123E	.15	.40	DC1-123E	.16	.40	DC2-123E
.015	.15	.40	DC.35-153E	.15	.40	DC.5-153E	.15	.40	DC1-153E	.16	.40	DC2-153E
.018	.15	.40	DC.35-183E	.15	.40	DC.5-183E	.15	.40	DC1-183E	.17	.40	DC2-183E
.022	.15	.40	DC.35-223E	.15	.40	DC.5-223E	.15	.40	DC1-223E	.18	.40	DC2-223E
.027	.15	.40	DC.35-273E	.15	.40	DC.5-273E	.15	.40	DC1-273E	.21	.40	DC2-273E
.033	.15	.40	DC.35-333E	.15	.40	DC.5-333E	.16	.40	DC1-333E	.22	.40	DC2-333E
.039	.15	.40	DC.35-393E	.15	.40	DC.5-393E	.19	.40	DC1-393E	.23	.40	DC2-393E
.047	.15	.40	DC.35-473E	.15	.40	DC.5-473E	.20	.40	DC1-473E	.24	.40	DC2-473E
.056	.15	.40	DC.35-563E	.15	.40	DC.5-563E	.22	.40	DC1-563E	.25	.53	DC2-563E
.068	.15	.40	DC.35-683E	.16	.40	DC.5-683E	.23	.40	DC1-683E	.26	.53	DC2-683E
.082	.15	.40	DC.35-823E	.17	.40	DC.5-823E	.18	.53	DC1-823E	.27	.53	DC2-823E
.10	.15	.40	DC.35-104E	.20	.40	DC.5-104E	.20	.53	DC1-104E	.31	.53	DC2-104E
.12	.15	.40	DC.35-124E	.21	.40	DC.5-124E	.22	.53	DC1-124E	.32	.53	DC2-124E
.15	.15	.40	DC.35-154E	.17	.53	DC.5-154E	.24	.53	DC1-154E	.30	.65	DC2-154E
.18	.16	.40	DC.35-184E	.18	.53	DC.5-184E	.26	.53	DC1-184E	.33	.65	DC2-184E
.22	.17	.40	DC.35-224E	.19	.53	DC.5-224E	.28	.53	DC1-224E	.34	.65	DC2-224E
.25	.18	.40	DC.35-254E	.20	.53	DC.5-254E	.25	.65	DC1-254E	.33	.78	DC2-254E
.27	.19	.40	DC.35-274E	.22	.53	DC.5-274E	.26	.65	DC1-274E	.34	.78	DC2-274E
.33	.21	.40	DC.35-334E	.23	.53	DC.5-334E	.28	.65	DC1-334E	.37	.78	DC2-334E
.39	.22	.40	DC.35-394E	.24	.53	DC.5-394E	.26	.78	DC1-394E	.39	.78	DC2-394E
.47	.24	.40	DC.35-474E	.26	.53	DC.5-474E	.28	.78	DC1-474E	.41	.78	DC2-474E
.50	.18	.53	DC.35-504E	.27	.53	DC.5-504E	.29	.78	DC1-504E	.42	.78	DC2-504E
.56	.18	.53	DC.35-564E	.28	.53	DC.5-564E	.30	.78	DC1-564E	.40	.97	DC2-564E
.68	.19	.53	DC.35-684E	.31	.53	DC.5-684E	.32	.78	DC1-684E	.42	.97	DC2-684E
.75	.20	.53	DC.35-754E	.32	.53	DC.5-754E	.35	.78	DC1-754E	.44	.97	DC2-754E
.82	.20	.53	DC.35-824E	.28	.65	DC.5-824E	.36	.78	DC1-824E	.42	1.17	DC2-824E
1.0	.23	.53	DC.35-105E	.30	.65	DC.5-105E	.34	.97	DC1-105E	.45	1.17	DC2-105E
1.2	.25	.53	DC.35-125E	.27	.78	DC.5-125E	.36	.97	DC1-125E	.40	1.68	DC2-125E
1.5	.28	.53	DC.35-155E	.30	.78	DC.5-155E	.40	.97	DC1-155E	.43	1.68	DC2-155E
1.8	.30	.53	DC.35-185E	.36	.78	DC.5-185E	.44	.97	DC1-185E	.47	1.68	DC2-185E
2.0	.31	.53	DC.35-205E	.37	.78	DC.5-205E	.45	.97	DC1-205E	.49	1.68	DC2-205E
3.0	.30	.65	DC.35-305E	.37	.97	DC.5-305E	.48	1.17	DC1-305E	.59	1.68	DC2-305E
4.0	.30	.78	DC.35-405E	.42	1.17	DC.5-405E	.45	1.68	DC1-405E	.70	1.68	DC2-405E
5.0	.34	.78	DC.35-505E	.45	1.17	DC.5-505E	.49	1.68	DC1-505E	.76	1.68	DC2-505E
6.0	.37	.78	DC.35-605E	.48	1.17	DC.5-605E	.51	2.00	DC1-605E	.82	1.68	DC2-605E
8.0	.38	.97	DC.35-805E	.55	1.17	DC.5-805E	.56	2.00	DC1-805E	.91	1.68	DC2-805E
10.0	.43	.97	DC.35-106E	.61	1.17	DC.5-106E	.62	2.00	DC1-106E	.99	1.68	DC2-106E
12.0	.36	1.17	DC.35-126E	.73	1.17	DC.5-126E	.67	2.00	DC1-126E	.99	2.25	DC2-126E
15.0	.41	1.17	DC.35-156E	.58	1.68	DC.5-156E	.72	2.00	DC1-156E	1.07	2.25	DC2-156E
20.0	.46	1.17	DC.35-206E	.69	1.68	DC.5-206E	.83	2.00	DC1-206E	1.23	2.25	DC2-206E
30.0	.58	1.17	DC.35-306E	.80	1.68	DC.5-306E	.98	2.00	DC1-306E	1.47	2.25	DC2-306E
40.0	.67	1.17	DC.35-406E	.89	1.68	DC.5-406E	1.10	2.00	DC1-406E	1.44	3.25	DC2-406E
50.0	.76	1.45	DC.35-506E	.98	1.68	DC.5-506E	1.22	2.00	DC1-506E	1.57	3.25	DC2-506E
75.0	.83	1.68	DC.35-756E	1.15	1.68	DC.5-756E	1.48	2.00	DC1-756E	1.89	3.25	DC2-756E
100.0	.81	2.25	DC.35-107E	1.32	1.68	DC.5-107E	1.70	2.00	DC1-107E	2.15	3.25	DC2-107E

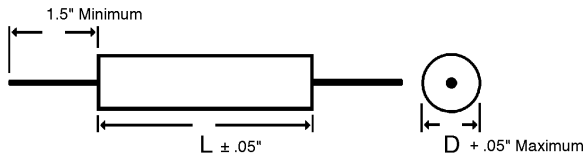
Note: Replace the last digit **E** with the desired tolerance code from the tolerance table. For an in-between value use the next larger value's dimensions. Custom sizes are readily available. All dimensions are in inches. All +.05" dimension tolerances are Maximum.

METALLIZED MYLAR WRAP AND FILL, ROUND AXIAL LEAD CAPACITORS



DC
METALLIZED MYLAR
WRAP & FILL, ROUND
REGULAR SERIES

DIMENSIONS See tables for specific D, L values.



WIRE SIZE (Length 1.5" Minimum)

BODY LENGTH (L)	WIRE SIZE	
	AWG No.	Diameter
≤ 0.65"	24	0.020"
> 0.65" ≤ 1.00"	22	0.025"
> 1.00"	20	0.032"

For UL 510 Flame Retardant Tape add -R to the end of Part Number.

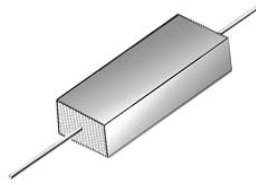
SELECTION AND ORDERING TABLES Select voltage rating, capacitance and tolerance, read Part Number to the right.

MFD	400VDC 160VAC			600VDC 230VAC			1000VDC 360VAC			2000VDC 700VAC		
	RATING	D +.05"	L ±.05"	PART #	D +.05"	L ±.05"	PART #	D +.05"	L ±.05"	PART #	D +.05"	L ±.05"
.001	.15	.40	DC4-102E	.15	.40	DC6-102E	.20	.97	DC10-102E	.20	.97	DC20-102E
.0012	.15	.40	DC4-122E	.15	.40	DC6-122E	.20	.97	DC10-122E	.20	.97	DC20-122E
.0015	.15	.40	DC4-152E	.15	.40	DC6-152E	.20	.97	DC10-152E	.20	.97	DC20-152E
.0018	.15	.40	DC4-182E	.15	.40	DC6-182E	.20	.97	DC10-182E	.20	.97	DC20-182E
.0022	.15	.40	DC4-222E	.15	.40	DC6-222E	.21	.97	DC10-222E	.22	.97	DC20-222E
.0027	.15	.40	DC4-272E	.15	.40	DC6-272E	.21	.97	DC10-272E	.23	.97	DC20-272E
.0033	.15	.40	DC4-332E	.15	.40	DC6-332E	.21	.97	DC10-332E	.25	.97	DC20-332E
.0039	.15	.40	DC4-392E	.15	.40	DC6-392E	.21	.97	DC10-392E	.27	.97	DC20-392E
.0047	.15	.40	DC4-472E	.15	.40	DC6-472E	.22	.97	DC10-472E	.29	.97	DC20-472E
.0056	.15	.40	DC4-562E	.16	.40	DC6-562E	.22	.97	DC10-562E	.31	.97	DC20-562E
.0068	.15	.40	DC4-682E	.17	.40	DC6-682E	.22	.97	DC10-682E	.34	.97	DC20-682E
.0082	.15	.40	DC4-822E	.19	.40	DC6-822E	.22	.97	DC10-822E	.36	.97	DC20-822E
.01	.21	.53	DC4-103E	.20	.53	DC6-103E	.23	.97	DC10-103E	.40	.97	DC20-103E
.012	.20	.53	DC4-123E	.21	.53	DC6-123E	.25	.97	DC10-123E	.43	.97	DC20-123E
.015	.21	.53	DC4-153E	.25	.53	DC6-153E	.27	.97	DC10-153E	.47	.97	DC20-153E
.018	.21	.53	DC4-183E	.27	.53	DC6-183E	.30	.97	DC10-183E	.51	.97	DC20-183E
.022	.21	.53	DC4-223E	.29	.53	DC6-223E	.31	.97	DC10-223E	.43	1.31	DC20-223E
.027	.23	.53	DC4-273E	.32	.53	DC6-273E	.34	.97	DC10-273E	.47	1.31	DC20-273E
.033	.24	.53	DC4-333E	.28	.65	DC6-333E	.37	.97	DC10-333E	.51	1.31	DC20-333E
.039	.27	.53	DC4-393E	.30	.65	DC6-393E	.40	.97	DC10-393E	.55	1.31	DC20-393E
.047	.28	.53	DC4-473E	.34	.65	DC6-473E	.43	.97	DC10-473E	.59	1.31	DC20-473E
.056	.29	.53	DC4-563E	.31	.78	DC6-563E	.46	.97	DC10-563E	.63	1.31	DC20-563E
.068	.30	.53	DC4-683E	.34	.78	DC6-683E	.50	.97	DC10-683E	.69	1.31	DC20-683E
.082	.31	.65	DC4-823E	.36	.78	DC6-823E	.42	1.31	DC10-823E	.62	1.68	DC20-823E
.10	.31	.65	DC4-104E	.39	.78	DC6-104E	.45	1.31	DC10-104E	.67	1.68	DC20-104E
.12	.29	.78	DC4-124E	.42	.78	DC6-124E	.49	1.31	DC10-124E	.74	1.68	DC20-124E
.15	.32	.78	DC4-154E	.41	.97	DC6-154E	.53	1.31	DC10-154E	.82	1.68	DC20-154E
.18	.35	.78	DC4-184E	.44	.97	DC6-184E	.57	1.31	DC10-184E	.88	1.68	DC20-184E
.22	.37	.78	DC4-224E	.42	1.17	DC6-224E	.62	1.31	DC10-224E	.98	1.68	DC20-224E
.25	.39	.78	DC4-254E	.45	1.17	DC6-254E	.66	1.31	DC10-254E	1.04	1.68	DC20-254E
.27	.41	.78	DC4-274E	.47	1.17	DC6-274E	.68	1.31	DC10-274E	1.08	1.68	DC20-274E
.33	.38	.97	DC4-334E	.53	1.17	DC6-334E	.62	1.68	DC10-334E	1.21	1.68	DC20-334E
.39	.37	1.17	DC4-394E	.56	1.17	DC6-394E	.66	1.68	DC10-394E	1.01	2.50	DC20-394E
.47	.41	1.17	DC4-474E	.61	1.17	DC6-474E	.72	1.68	DC10-474E	1.11	2.50	DC20-474E
.50	.43	1.17	DC4-504E	.63	1.17	DC6-504E	.74	1.68	DC10-504E			
.56	.44	1.17	DC4-564E	.54	1.68	DC6-564E	.79	1.68	DC10-564E			
.68	.48	1.17	DC4-684E	.58	1.68	DC6-684E	.85	1.68	DC10-684E			
.75	.50	1.17	DC4-754E	.61	1.68	DC6-754E	.89	1.68	DC10-754E			
.82	.52	1.17	DC4-824E	.64	1.68	DC6-824E	.93	1.68	DC10-824E			
1.0	.58	1.17	DC4-105E	.70	1.68	DC6-105E	1.03	1.68	DC10-105E			
1.2	.52	1.68	DC4-125E	.77	1.68	DC6-125E	.86	2.50	DC10-125E			
1.5	.57	1.68	DC4-155E	.84	1.68	DC6-155E	.96	2.50	DC10-155E			
1.8	.63	1.68	DC4-185E	.91	1.68	DC6-185E	1.05	2.50	DC10-185E			
2.0	.66	1.68	DC4-205E	.95	1.68	DC6-205E	1.09	2.50	DC10-205E			
3.0	.80	1.68	DC4-305E	1.14	1.68	DC6-305E	1.32	2.50	DC10-305E			
4.0	.91	1.68	DC4-405E	1.14	2.25	DC6-405E	1.52	2.50	DC10-405E			
5.0	.99	1.68	DC4-505E	1.25	2.25	DC6-505E	1.69	2.50	DC10-505E			
6.0	.90	2.25	DC4-605E	1.40	2.25	DC6-605E	1.85	2.50	DC10-605E			
8.0	1.02	2.25	DC4-805E	1.58	2.25	DC6-805E	1.86	3.25	DC10-805E			
10.0	1.23	2.25	DC4-106E	1.74	2.25	DC6-106E	2.06	3.25	DC10-106E			
12.0	1.33	2.25	DC4-126E	1.88	2.25	DC6-126E	2.24	3.25	DC10-126E			
15.0	1.46	2.25	DC4-156E	2.08	2.25	DC6-156E	2.49	3.25	DC10-156E			

TOLERANCE TABLE	
Code	Tolerance
A	± 1% ♦
B	± 2% ♦
C	± 3% ♦
D	± 5%
E	± 10%
None	± 20%
♦ = Temperature Stabilized	

Note: Replace the last digit E with the desired tolerance code from the tolerance table. For an in-between value use the next larger value's dimensions. Custom sizes are readily available. All dimensions are in inches. All +.05" dimension tolerances are Maximum.

METALLIZED MYLAR EPOXY CASE, AXIAL LEAD, RECTANGULAR CAPACITORS



DE
METALLIZED MYLAR
EPOXY CASE, AXIAL, RECT.
REGULAR SERIES

ORDERING DESCRIPTION

Capacitor, fixed: Metallized Mylar dielectric; extended foil construction; tin-plated copper-clad steel wire axial leads; encased in a molded epoxy/plastic shell with epoxy fill.

APPLICATION NOTES

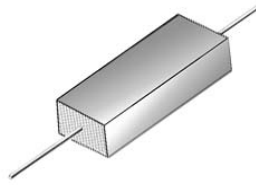
Epoxy Case capacitors are not intended for exposure to high humidity conditions over extended periods of time. For stringent environmental conditions, Epoxy Case capacitors should be used in encapsulated or hermetically sealed circuitry.

SELECTION AND ORDERING TABLES Select voltage rating, capacitance and tolerance, read Part Number to the right.

MFD	35VDC 20VAC				50VDC 40VAC				100VDC 70VAC				200VDC 120VAC			
	T		W		L		PART #		T		W		L		PART #	
	± .01"	± .01"	± .03"		± .01"	± .01"	± .03"		± .01"	± .01"	± .03"		± .01"	± .01"	± .03"	
.001	.17	.29	.42	DE.35-102E	.17	.29	.42	DE.5-102E	.17	.29	.42	DE3D102E	.17	.29	.42	DE2-102E
.0027	.17	.29	.42	DE.35-272E	.17	.29	.42	DE.5-272E	.17	.29	.42	DE1-272E	.17	.29	.42	DE2-272E
.0033	.17	.29	.42	DE.35-332E	.17	.29	.42	DE.5-332E	.17	.29	.42	DE1-332E	.17	.29	.42	DE2-332E
.0056	.17	.29	.42	DE.35-562E	.17	.29	.42	DE.5-562E	.17	.29	.42	DE1-562E	.17	.29	.42	DE2-562E
.0068	.17	.29	.42	DE.35-682E	.17	.29	.42	DE.5-682E	.17	.29	.42	DE1-682E	.17	.29	.42	DE2-682E
.0082	.17	.29	.42	DE.35-822E	.17	.29	.42	DE.5-822E	.17	.29	.42	DE1-822E	.17	.29	.42	DE2-822E
.01	.17	.29	.42	DE.35-103E	.17	.29	.42	DE.5-103E	.17	.29	.42	DE1-103E	.17	.29	.42	DE2-103E
.012	.17	.29	.42	DE.35-123E	.17	.29	.42	DE.5-123E	.17	.29	.42	DE1-123E	.17	.29	.42	DE2-123E
.015	.17	.29	.42	DE.35-153E	.17	.29	.42	DE.5-153E	.17	.29	.42	DE1-153E	.17	.29	.42	DE2-153E
.018	.17	.29	.42	DE.35-183E	.17	.29	.42	DE.5-183E	.17	.29	.42	DE1-183E	.17	.29	.42	DE2-183E
.022	.17	.29	.42	DE.35-223E	.17	.29	.42	DE.5-223E	.17	.29	.42	DE1-223E	.17	.29	.42	DE2-223E
.027	.17	.29	.42	DE.35-273E	.17	.29	.42	DE.5-273E	.17	.29	.42	DE1-273E	.17	.29	.57	DE2-273E
.033	.17	.29	.42	DE.35-333E	.17	.29	.42	DE.5-333E	.17	.29	.42	DE1-333E	.17	.29	.57	DE2-333E
.039	.17	.29	.42	DE.35-393E	.17	.29	.42	DE.5-393E	.17	.29	.42	DE1-393E	.17	.29	.57	DE2-393E
.047	.17	.29	.42	DE.35-473E	.17	.29	.42	DE.5-473E	.17	.29	.42	DE1-473E	.23	.36	.55	DE2-473E
.056	.17	.29	.42	DE.35-563E	.17	.29	.42	DE.5-563E	.17	.29	.57	DE1-563E	.23	.36	.55	DE2-563E
.068	.17	.29	.42	DE.35-683E	.17	.29	.42	DE.5-683E	.17	.29	.57	DE1-683E	.23	.36	.55	DE2-683E
.082	.17	.29	.42	DE.35-823E	.17	.29	.42	DE.5-823E	.17	.29	.57	DE1-823E	.23	.36	.55	DE2-823E
.10	.17	.29	.42	DE.35-104E	.17	.29	.42	DE.5-104E	.17	.29	.57	DE1-104E	.29	.42	.57	DE2-104E
.12	.17	.29	.42	DE.35-124E	.17	.29	.42	DE.5-124E	.17	.29	.57	DE1-124E	.29	.42	.57	DE2-124E
.15	.17	.29	.42	DE.35-154E	.17	.29	.57	DE.5-154E	.23	.36	.55	DE1-154E	.29	.42	.67	DE2-154E
.18	.17	.29	.42	DE.35-184E	.17	.29	.57	DE.5-184E	.23	.36	.55	DE1-184E	.29	.42	.67	DE2-184E
.22	.17	.29	.42	DE.35-224E	.23	.36	.55	DE.5-224E	.23	.36	.55	DE1-224E	.29	.42	.67	DE2-224E
.25	.23	.36	.42	DE.35-254E	.23	.36	.55	DE.5-254E	.29	.42	.57	DE1-254E	.29	.42	.82	DE2-254E
.27	.23	.36	.42	DE.35-274E	.23	.36	.55	DE.5-274E	.29	.42	.57	DE1-274E	.29	.42	.82	DE2-274E
.33	.23	.36	.42	DE.35-334E	.23	.36	.55	DE.5-334E	.29	.42	.57	DE1-334E	.39	.54	.82	DE2-334E
.39	.23	.36	.42	DE.35-394E	.23	.36	.55	DE.5-394E	.29	.42	.67	DE1-394E	.39	.54	.82	DE2-394E
.47	.23	.36	.42	DE.35-474E	.29	.42	.57	DE.5-474E	.29	.42	.67	DE1-474E	.39	.54	.82	DE2-474E
.50	.17	.29	.55	DE.35-504E	.29	.42	.57	DE.5-504E	.29	.42	.67	DE1-504E	.39	.54	.82	DE2-504E
.56	.17	.29	.55	DE.35-564E	.29	.42	.57	DE.5-564E	.29	.42	.67	DE1-564E	.39	.54	1.04	DE2-564E
.68	.23	.36	.55	DE.35-684E	.29	.42	.57	DE.5-684E	.29	.42	.82	DE1-684E	.39	.54	1.04	DE2-684E
.75	.23	.36	.55	DE.35-754E	.29	.42	.57	DE.5-754E	.29	.42	.82	DE1-754E	.39	.54	1.04	DE2-754E
.82	.23	.36	.55	DE.35-824E	.29	.42	.67	DE.5-824E	.29	.42	.82	DE1-824E	.39	.54	1.19	DE2-824E
1.0	.23	.36	.55	DE.35-105E	.29	.42	.67	DE.5-105E	.39	.54	.82	DE1-105E	.39	.54	1.19	DE2-105E
1.2	.29	.42	.55	DE.35-125E	.39	.54	.82	DE.5-125E	.39	.54	.82	DE1-125E	.56	.72	1.75	DE2-125E
1.5	.29	.42	.55	DE.35-155E	.39	.54	.82	DE.5-155E	.39	.54	.82	DE1-155E	.56	.72	1.75	DE2-155E
1.8	.29	.42	.55	DE.35-185E	.39	.54	.82	DE.5-185E	.39	.54	1.04	DE1-185E	.56	.72	1.75	DE2-185E
2.0	.29	.42	.67	DE.35-205E	.39	.54	.82	DE.5-205E	.39	.54	1.04	DE1-205E	.56	.72	1.75	DE2-205E
3.0	.29	.42	.67	DE.35-305E	.39	.54	1.04	DE.5-305E	.56	.72	1.24	DE1-305E	.56	.72	1.75	DE2-305E
4.0	.39	.54	.82	DE.35-405E	.56	.72	1.24	DE.5-405E	.56	.72	1.24	DE1-405E	.76	.96	1.75	DE2-405E
5.0	.39	.54	.82	DE.35-505E	.56	.72	1.24	DE.5-505E	.56	.72	1.24	DE1-505E	.76	.96	1.75	DE2-505E
6.0	.39	.54	.82	DE.35-605E	.56	.72	1.24	DE.5-605E	.56	.72	1.75	DE1-605E	.76	.96	1.75	DE2-605E
8.0	.50	.68	1.04	DE.35-805E	.56	.72	1.24	DE.5-805E	.56	.72	1.75	DE1-805E	.97	1.21	1.75	DE2-805E
10.0	.50	.68	1.04	DE.35-106E	.56	.72	1.24	DE.5-106E	.56	.72	1.95	DE1-106E	.97	1.21	1.75	DE2-106E
12.0	.50	.68	1.24	DE.35-126E	.56	.72	1.24	DE.5-126E	.76	.96	2.10	DE1-126E	.97	1.21	2.25	DE2-126E
15.0	.50	.68	1.24	DE.35-156E	.56	.72	1.75	DE.5-156E	.76	.96	2.10	DE1-156E	.97	1.21	2.25	DE2-156E
20.0	.50	.68	1.24	DE.35-206E	.76	.96	1.75	DE.5-206E	.76	.96	2.10	DE1-206E	1.23	1.60	2.25	DE2-206E
30.0	.58	.79	1.24	DE.35-306E	.76	.96	1.75	DE.5-306E	.97	1.21	2.10	DE1-306E	1.59	1.81	2.25	DE2-306E
40.0	.76	.96	1.24	DE.35-406E	.97	1.21	1.75	DE.5-406E	1.23	1.60	2.10	DE1-406E	1.88	2.36	3.25	DE2-406E
50.0	.76	.96	1.40	DE.35-506E	.97	1.21	1.75	DE.5-506E	1.23	1.60	2.10	DE1-506E	1.88	2.36	3.25	DE2-506E
75.0	.76	.96	1.65	DE.35-756E	1.23	1.60	1.75	DE.5-756E	1.59	1.81	2.10	DE1-756E	1.88	2.36	3.25	DE2-756E
100.0	.76	.96	2.10	DE.35-107E	1.23	1.60	1.75	DE.5-107E	1.88	2.36	2.10	DE1-107E	2.18	2.27	3.25	DE2-107E

Note: Replace the last digit **E** with the desired tolerance code from the tolerance table. For an in-between value use the next larger value's dimensions. Custom sizes are readily available. All dimensions are in inches.

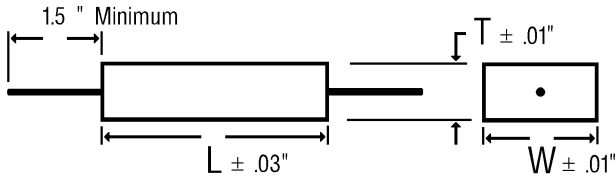
METALLIZED MYLAR EPOXY CASE, AXIAL LEAD, RECTANGULAR CAPACITORS



DE
METALLIZED MYLAR
EPOXY CASE, AXIAL, RECT.
REGULAR SERIES

DIMENSIONS See tables for specific T, W, L values.

WIRE SIZE (Length 1.5" Minimum)



BODY LENGTH (L)	WIRE SIZE	
	AWG No.	Diameter
≤ 0.67"	24	0.020"
> 0.67" ≤ 1.06"	22	0.025"
> 1.06"	20	0.032"

SELECTION AND ORDERING TABLES Select voltage rating, capacitance and tolerance, read Part Number to the right.

MFD	400VDC 160VAC				600VDC 230VAC				1000VDC 360VAC				2000VDC 700VAC			
	RATING	T	W	L	PART #	T	W	L	PART #	T	W	L	PART #	T	W	L
	± .01"	± .01"	± .03"		± .01"	± .01"	± .03"		± .01"	± .01"	± .03"		± .01"	± .01"	± .03"	
.001	.17	.29	.42	DE4-102E	.17	.29	.42	DE6-102E	.29	.42	1.06	DE10-102E	.29	.42	1.06	DE20-102E
.0012	.17	.29	.42	DE4-122E	.17	.29	.42	DE6-122E	.29	.42	1.06	DE10-122E	.29	.42	1.06	DE20-122E
.0015	.17	.29	.42	DE4-152E	.17	.29	.42	DE6-152E	.29	.42	1.06	DE10-152E	.29	.42	1.06	DE20-152E
.0018	.17	.29	.42	DE4-182E	.17	.29	.42	DE6-182E	.29	.42	1.06	DE10-182E	.29	.42	1.06	DE20-182E
.0022	.17	.29	.42	DE4-222E	.17	.29	.42	DE6-222E	.29	.42	1.06	DE10-222E	.29	.42	1.06	DE20-222E
.0027	.17	.29	.42	DE4-272E	.17	.29	.42	DE6-272E	.29	.42	1.06	DE10-272E	.29	.42	1.06	DE20-272E
.0033	.17	.29	.42	DE4-332E	.17	.29	.42	DE6-332E	.29	.42	1.06	DE10-332E	.29	.42	1.06	DE20-332E
.0039	.17	.29	.42	DE4-392E	.17	.29	.42	DE6-392E	.29	.42	1.06	DE10-392E	.29	.42	1.06	DE20-392E
.0047	.17	.29	.42	DE4-472E	.17	.29	.42	DE6-472E	.29	.42	1.06	DE10-472E	.29	.42	1.06	DE20-472E
.0056	.17	.29	.42	DE4-562E	.17	.29	.42	DE6-562E	.29	.42	1.06	DE10-562E	.39	.54	1.06	DE20-562E
.0068	.17	.29	.42	DE4-682E	.17	.29	.42	DE6-682E	.29	.42	1.06	DE10-682E	.39	.54	1.06	DE20-682E
.0082	.17	.29	.42	DE4-822E	.17	.29	.42	DE6-822E	.29	.42	1.06	DE10-822E	.39	.54	1.06	DE20-822E
.01	.17	.29	.57	DE4-103E	.17	.29	.57	DE6-103E	.29	.42	1.06	DE10-103E	.39	.54	1.06	DE20-103E
.012	.17	.29	.57	DE4-123E	.23	.36	.55	DE6-123E	.29	.42	1.06	DE10-123E	.56	.72	1.06	DE20-123E
.015	.17	.29	.57	DE4-153E	.23	.36	.55	DE6-153E	.29	.42	1.06	DE10-153E	.56	.72	1.06	DE20-153E
.018	.17	.29	.57	DE4-183E	.23	.36	.55	DE6-183E	.29	.42	1.06	DE10-183E	.56	.72	1.06	DE20-183E
.022	.17	.29	.57	DE4-223E	.29	.42	.57	DE6-223E	.39	.54	1.06	DE10-223E	.56	.72	1.35	DE20-223E
.027	.23	.36	.55	DE4-273E	.29	.42	.57	DE6-273E	.39	.54	1.06	DE10-273E	.56	.72	1.35	DE20-273E
.033	.23	.36	.55	DE4-333E	.29	.42	.67	DE6-333E	.39	.54	1.06	DE10-333E	.56	.72	1.35	DE20-333E
.039	.23	.36	.55	DE4-393E	.29	.42	.67	DE6-393E	.39	.54	1.06	DE10-393E	.56	.72	1.35	DE20-393E
.047	.29	.42	.57	DE4-473E	.29	.42	.67	DE6-473E	.56	.72	1.06	DE10-473E	.76	.96	1.35	DE20-473E
.056	.29	.42	.57	DE4-563E	.29	.42	.82	DE6-563E	.56	.72	1.06	DE10-563E	.76	.96	1.35	DE20-563E
.068	.29	.42	.57	DE4-683E	.29	.42	.82	DE6-683E	.56	.72	1.06	DE10-683E	.76	.96	1.35	DE20-683E
.082	.29	.42	.67	DE4-823E	.39	.54	.82	DE6-823E	.56	.72	1.06	DE10-823E	.76	.96	1.75	DE20-823E
.10	.29	.42	.67	DE4-104E	.39	.54	.82	DE6-104E	.56	.72	1.35	DE10-104E	.76	.96	1.75	DE20-104E
.12	.29	.42	.82	DE4-124E	.39	.54	.82	DE6-124E	.56	.72	1.35	DE10-124E	.76	.96	1.75	DE20-124E
.15	.29	.42	.82	DE4-154E	.39	.54	1.04	DE6-154E	.56	.72	1.35	DE10-154E	.97	1.21	1.75	DE20-154E
.18	.39	.54	.82	DE4-184E	.39	.54	1.04	DE6-184E	.56	.72	1.35	DE10-184E	.97	1.21	1.75	DE20-184E
.22	.39	.54	.82	DE4-224E	.39	.54	1.19	DE6-224E	.76	.96	1.35	DE10-224E	.97	1.21	1.75	DE20-224E
.25	.39	.54	.82	DE4-254E	.56	.72	1.24	DE6-254E	.76	.96	1.35	DE10-254E	.97	1.21	1.75	DE20-254E
.27	.39	.54	.82	DE4-274E	.56	.72	1.24	DE6-274E	.76	.96	1.35	DE10-274E	1.23	1.60	1.75	DE20-274E
.33	.39	.54	1.19	DE4-334E	.56	.72	1.24	DE6-334E	.76	.96	1.75	DE10-334E	1.23	1.60	1.75	DE20-334E
.39	.39	.54	1.19	DE4-394E	.56	.72	1.24	DE6-394E	.76	.96	1.75	DE10-394E	.97	1.21	2.50	DE20-394E
.47	.39	.54	1.19	DE4-474E	.56	.72	1.24	DE6-474E	.76	.96	1.75	DE10-474E	.97	1.21	2.50	DE20-474E
.50	.39	.54	1.19	DE4-504E	.56	.72	1.24	DE6-504E	.76	.96	1.75	DE10-504E				
.56	.56	.72	1.24	DE4-564E	.56	.72	1.75	DE6-564E	.76	.96	1.75	DE10-564E				
.68	.56	.72	1.24	DE4-684E	.56	.72	1.75	DE6-684E	.97	1.21	1.75	DE10-684E				
.75	.56	.72	1.24	DE4-754E	.56	.72	1.75	DE6-754E	.97	1.21	1.75	DE10-754E				
.82	.56	.72	1.24	DE4-824E	.56	.72	1.75	DE6-824E	.97	1.21	1.75	DE10-824E				
1.0	.56	.72	1.24	DE4-105E	.76	.96	1.75	DE6-105E	.97	1.21	1.75	DE10-105E				
1.2	.56	.72	1.75	DE4-125E	.76	.96	1.75	DE6-125E	.97	1.21	2.50	DE10-125E				
1.5	.56	.72	1.75	DE4-155E	.76	.96	1.75	DE6-155E	.97	1.21	2.50	DE10-155E				
1.8	.76	.96	1.75	DE4-185E	.97	1.21	1.75	DE6-185E	.97	1.21	2.50	DE10-185E				
2.0	.76	.96	1.75	DE4-205E	.97	1.21	1.75	DE6-205E	1.23	1.60	2.50	DE10-205E				
3.0	.76	.96	1.75	DE4-305E	1.23	1.60	1.75	DE6-305E	1.23	1.60	2.50	DE10-305E				
4.0	.97	1.21	1.75	DE4-405E	1.23	1.60	2.25	DE6-405E	1.59	1.81	2.50	DE10-405E				
5.0	.97	1.21	1.75	DE4-505E	1.23	1.60	2.25	DE6-505E	1.88	2.36	2.50	DE10-505E				
6.0	.97	1.21	2.25	DE4-605E	1.23	1.60	2.25	DE6-605E	1.88	2.36	2.50	DE10-605E				
8.0	1.23	1.60	2.25	DE4-805E	1.59	1.81	2.25	DE6-805E	1.88	2.36	3.25	DE10-805E				
10.0	1.23	1.60	2.25	DE4-106E	1.59	1.81	2.25	DE6-106E	2.18	2.27	3.25	DE10-106E				
12.0	1.23	1.60	2.25	DE4-126E	1.88	2.36	2.25	DE6-126E								
15.0	1.59	1.81	2.25	DE4-156E	2.18	2.27	2.25	DE6-156E								

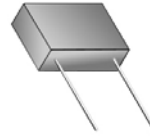
TOLERANCE TABLE

Code Tolerance

- A = ± 1% ♦
- B = ± 2% ♦
- C = ± 3% ♦
- D = ± 5%
- E = ± 10%
- None = ± 20%
- ♦ = Temperature Stabilized

Note: Replace the last digit **E** with the desired tolerance code from the tolerance table. For an in-between value use the next larger value's dimensions. Custom sizes are readily available. All dimensions are in inches.

METALLIZED MYLAR EPOXY CASE, RADIAL LEAD, RECTANGULAR CAPACITORS



D2E
METALLIZED MYLAR
EPOXY CASE, RADIAL, RECT.
REGULAR SERIES

ORDERING DESCRIPTION

Capacitor, fixed: Metallized Mylar dielectric; extended foil construction; tin-plated copper-clad steel wire axial leads; encased in a molded epoxy/plastic shell with epoxy fill.

APPLICATION NOTES

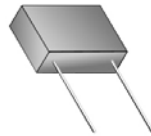
Epoxy Case capacitors are not intended for exposure to high humidity conditions over extended periods of time. For stringent environmental conditions, Epoxy Case capacitors should be used in encapsulated or hermetically sealed circuitry.

SELECTION AND ORDERING TABLES Select voltage rating, capacitance and tolerance, read Part Number to the right.

MFD	35VDC 20VAC				50VDC 40VAC				100VDC 70VAC				200VDC 120VAC				
	RATING	T	H	L	PART #	T	H	L	PART #	T	H	L	PART #	T	H	L	PART #
	± .01"	± .01"	± .01"		± .01"	± .01"	± .01"		± .01"	± .01"	± .01"		± .01"	± .01"	± .01"		± .01"
.001	.18	.30	.42	D2E.35-102E	.18	.30	.42	D2E.5-102E	.18	.30	.42	D2E1-102E	.18	.30	.42	D2E2-102E	
.0012	.18	.30	.42	D2E.35-122E	.18	.30	.42	D2E.5-122E	.18	.30	.42	D2E1-122E	.18	.30	.42	D2E2-122E	
.0018	.18	.30	.42	D2E.35-182E	.18	.30	.42	D2E.5-182E	.18	.30	.42	D2E1-182E	.18	.30	.42	D2E2-182E	
.0022	.18	.30	.42	D2E.35-222E	.18	.30	.42	D2E.5-222E	.18	.30	.42	D2E1-222E	.18	.30	.42	D2E2-222E	
.0027	.18	.30	.42	D2E.35-272E	.18	.30	.42	D2E.5-272E	.18	.30	.42	D2E1-272E	.18	.30	.42	D2E2-272E	
.0033	.18	.30	.42	D2E.35-332E	.18	.30	.42	D2E.5-332E	.18	.30	.42	D2E1-332E	.18	.30	.42	D2E2-332E	
.0047	.18	.30	.42	D2E.35-472E	.18	.30	.42	D2E.5-472E	.18	.30	.42	D2E1-472E	.18	.30	.42	D2E2-472E	
.0056	.18	.30	.42	D2E.35-562E	.18	.30	.42	D2E.5-562E	.18	.30	.42	D2E1-562E	.18	.30	.42	D2E2-562E	
.0068	.18	.30	.42	D2E.35-682E	.18	.30	.42	D2E.5-682E	.18	.30	.42	D2E1-682E	.18	.30	.42	D2E2-682E	
.0082	.18	.30	.42	D2E.35-822E	.18	.30	.42	D2E.5-822E	.18	.30	.42	D2E1-822E	.18	.30	.42	D2E2-822E	
.01	.18	.30	.42	D2E.35-103E	.18	.30	.42	D2E.5-103E	.18	.30	.42	D2E1-103E	.18	.30	.42	D2E2-103E	
.012	.18	.30	.42	D2E.35-123E	.18	.30	.42	D2E.5-123E	.18	.30	.42	D2E1-123E	.18	.30	.42	D2E2-123E	
.015	.18	.30	.42	D2E.35-153E	.18	.30	.42	D2E.5-153E	.18	.30	.42	D2E1-153E	.18	.30	.42	D2E2-153E	
.018	.18	.30	.42	D2E.35-183E	.18	.30	.42	D2E.5-183E	.18	.30	.42	D2E1-183E	.18	.30	.42	D2E2-183E	
.022	.18	.30	.42	D2E.35-223E	.18	.30	.42	D2E.5-223E	.18	.30	.42	D2E1-223E	.18	.30	.42	D2E2-223E	
.027	.18	.30	.42	D2E.35-273E	.18	.30	.42	D2E.5-273E	.18	.30	.42	D2E1-273E	.18	.30	.55	D2E2-273E	
.033	.18	.30	.42	D2E.35-333E	.18	.30	.42	D2E.5-333E	.18	.30	.42	D2E1-333E	.18	.30	.55	D2E2-333E	
.039	.18	.30	.42	D2E.35-393E	.18	.30	.42	D2E.5-393E	.18	.30	.42	D2E1-393E	.18	.30	.55	D2E2-393E	
.047	.18	.30	.42	D2E.35-473E	.18	.30	.42	D2E.5-473E	.18	.30	.42	D2E1-473E	.24	.37	.55	D2E2-473E	
.056	.18	.30	.42	D2E.35-563E	.18	.30	.42	D2E.5-563E	.18	.30	.55	D2E1-563E	.24	.37	.55	D2E2-563E	
.068	.18	.30	.42	D2E.35-683E	.18	.30	.42	D2E.5-683E	.18	.30	.55	D2E1-683E	.24	.37	.55	D2E2-683E	
.082	.18	.30	.42	D2E.35-823E	.18	.30	.42	D2E.5-823E	.18	.30	.55	D2E1-823E	.24	.37	.55	D2E2-823E	
.10	.18	.30	.42	D2E.35-104E	.18	.30	.42	D2E.5-104E	.18	.30	.55	D2E1-104E	.30	.43	.55	D2E2-104E	
.12	.18	.30	.42	D2E.35-124E	.18	.30	.42	D2E.5-124E	.18	.30	.55	D2E1-124E	.30	.43	.55	D2E2-124E	
.15	.18	.30	.42	D2E.35-154E	.18	.30	.55	D2E.5-154E	.24	.37	.55	D2E1-154E	.30	.43	.67	D2E2-154E	
.18	.18	.30	.42	D2E.35-184E	.18	.30	.55	D2E.5-184E	.24	.37	.55	D2E1-184E	.30	.43	.67	D2E2-184E	
.22	.18	.30	.42	D2E.35-224E	.24	.37	.55	D2E.5-224E	.24	.37	.55	D2E1-224E	.30	.43	.67	D2E2-224E	
.25	.18	.30	.42	D2E.35-254E	.24	.37	.55	D2E.5-254E	.30	.43	.55	D2E1-254E	.30	.43	.82	D2E2-254E	
.27	.18	.30	.42	D2E.35-274E	.24	.37	.55	D2E.5-274E	.30	.43	.55	D2E1-274E	.30	.43	.82	D2E2-274E	
.33	.18	.30	.42	D2E.35-334E	.24	.37	.55	D2E.5-334E	.30	.43	.55	D2E1-334E	.40	.55	.82	D2E2-334E	
.39	.18	.30	.55	D2E.35-394E	.24	.37	.55	D2E.5-394E	.30	.43	.67	D2E1-394E	.40	.55	.82	D2E2-394E	
.47	.18	.30	.55	D2E.35-474E	.24	.37	.55	D2E.5-474E	.30	.43	.67	D2E1-474E	.40	.55	.82	D2E2-474E	
.50	.18	.30	.55	D2E.35-504E	.30	.43	.55	D2E.5-504E	.30	.43	.67	D2E1-504E	.40	.55	.82	D2E2-504E	
.56	.18	.30	.55	D2E.35-564E	.30	.43	.55	D2E.5-564E	.30	.43	.67	D2E1-564E	.40	.55	1.04	D2E2-564E	
.68	.24	.37	.55	D2E.35-684E	.30	.43	.55	D2E.5-684E	.30	.43	.82	D2E1-684E	.40	.55	1.04	D2E2-684E	
.75	.24	.37	.55	D2E.35-754E	.30	.43	.55	D2E.5-754E	.30	.43	.82	D2E1-754E	.40	.55	1.04	D2E2-754E	
.82	.24	.37	.55	D2E.35-824E	.30	.43	.67	D2E.5-824E	.30	.43	.82	D2E1-824E	.40	.55	1.24	D2E2-824E	
1.0	.24	.37	.55	D2E.35-105E	.30	.43	.67	D2E.5-105E	.40	.55	.82	D2E1-105E	.40	.55	1.24	D2E2-105E	
1.2	.24	.37	.55	D2E.35-125E	.40	.55	.82	D2E.5-125E	.40	.55	.82	D2E1-125E	.57	.73	1.75	D2E2-125E	
1.5	.30	.43	.55	D2E.35-155E	.40	.55	.82	D2E.5-155E	.40	.55	.82	D2E1-155E	.57	.73	1.75	D2E2-155E	
1.8	.30	.43	.55	D2E.35-185E	.40	.55	.82	D2E.5-185E	.40	.55	1.04	D2E1-185E	.57	.73	1.75	D2E2-185E	
2.0	.30	.43	.55	D2E.35-205E	.40	.55	.82	D2E.5-205E	.40	.55	1.04	D2E1-205E	.57	.73	1.75	D2E2-205E	
3.0	.30	.43	.67	D2E.35-305E	.40	.55	1.04	D2E.5-305E	.57	.73	1.24	D2E1-305E	.57	.73	1.75	D2E2-305E	
4.0	.30	.43	.82	D2E.35-405E	.57	.73	1.24	D2E.5-405E	.57	.73	1.24	D2E1-405E	.70	1.13	1.75	D2E2-405E	
5.0	.40	.55	.82	D2E.35-505E	.57	.73	1.24	D2E.5-505E	.57	.73	1.24	D2E1-505E	.70	1.13	1.75	D2E2-505E	
6.0	.40	.55	.82	D2E.35-605E	.57	.73	1.24	D2E.5-605E	.57	.73	1.75	D2E1-605E	.80	1.13	1.75	D2E2-605E	
8.0	.40	.55	1.04	D2E.35-805E	.57	.73	1.24	D2E.5-805E	.57	.73	1.75	D2E1-805E	.80	1.13	1.75	D2E2-805E	
10.0	.40	.55	1.04	D2E.35-106E	.57	.73	1.24	D2E.5-106E	.70	1.13	1.75	D2E1-106E	1.27	1.40	1.77	D2E2-106E	
12.0	.57	.73	1.24	D2E.35-126E	.57	.73	1.24	D2E.5-126E	.70	1.13	1.75	D2E1-126E	1.27	1.40	1.77	D2E2-126E	
15.0	.57	.73	1.24	D2E.35-156E	.57	.73	1.75	D2E.5-156E	.70	1.13	1.75	D2E1-156E	1.27	1.40	1.77	D2E2-156E	
18.0	.57	.73	1.24	D2E.35-186E	.70	1.13	1.75	D2E.5-186E	.80	1.13	1.75	D2E1-186E					
20.0	.57	.73	1.24	D2E.35-206E	.70	1.13	1.75	D2E.5-206E	.80	1.13	1.75	D2E1-206E					

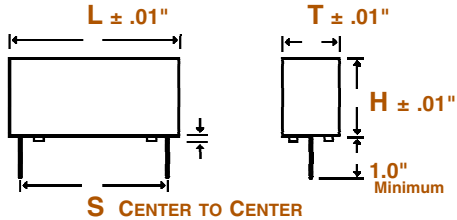
Note: Replace the last digit **E** with the desired tolerance code from the tolerance table. For an in-between value use the next larger value's dimensions. Custom sizes are readily available. All dimensions are in inches.

METALLIZED MYLAR EPOXY CASE, RADIAL LEAD, RECTANGULAR CAPACITORS



D2E METALLIZED MYLAR EPOXY CASE, RADIAL, RECT. REGULAR SERIES

DIMENSIONS See tables for specific **T, H, L, S** values.



** The mounting pads consist of two individual pads on each end or one continuous pad on each end, depending on the mold. (not an option).

WIRE SIZE (Length 1.0" Minimum)

BODY LENGTH (L)	LEAD SPACING (S) (C to C ± .01")	WIRE SIZE	
		AWG No.	Diameter
.42"	.300"	22	0.025"
.55"	.400"	22	0.025"
.67"	.500"	22	0.025"
.82"	.600"	22	0.025"
1.04"	.800"	22	0.025"
1.24"	1.100"	20	0.032"
1.75"	1.600"	20	0.032"

SELECTION AND ORDERING TABLES Select voltage rating, capacitance and tolerance, read Part Number to the right.

MFD	400VDC 160VAC				600VDC 230VAC				1000VDC 360VAC				2000VDC 700VAC			
RATING	T	H	L	PART #	T	H	L	PART #	T	H	L	PART #	T	H	L	PART #
	± .01"	± .01"	± .01"		± .01"	± .01"	± .01"		± .01"	± .01"	± .01"		± .01"	± .01"	± .01"	
.001	.18	.30	.42	D2E4-102E	.18	.30	.42	D2E6-102E	.40	.55	1.04	D2E10-102E	.40	.55	1.04	D2E20-102E
.0012	.18	.30	.42	D2E4-122E	.18	.30	.42	D2E6-122E	.40	.55	1.04	D2E10-122E	.40	.55	1.04	D2E20-122E
.0015	.18	.30	.42	D2E4-152E	.18	.30	.42	D2E6-152E	.40	.55	1.04	D2E10-152E	.40	.55	1.04	D2E20-152E
.0018	.18	.30	.42	D2E4-182E	.18	.30	.42	D2E6-182E	.40	.55	1.04	D2E10-182E	.40	.55	1.04	D2E20-182E
.0022	.18	.30	.42	D2E4-222E	.18	.30	.42	D2E6-222E	.40	.55	1.04	D2E10-222E	.40	.55	1.04	D2E20-222E
.0027	.18	.30	.42	D2E4-272E	.18	.30	.42	D2E6-272E	.40	.55	1.04	D2E10-272E	.40	.55	1.04	D2E20-272E
.0033	.18	.30	.42	D2E4-332E	.18	.30	.42	D2E6-332E	.40	.55	1.04	D2E10-332E	.40	.55	1.04	D2E20-332E
.0039	.18	.30	.42	D2E4-392E	.18	.30	.42	D2E6-392E	.40	.55	1.04	D2E10-392E	.40	.55	1.04	D2E20-392E
.0047	.18	.30	.42	D2E4-472E	.18	.30	.42	D2E6-472E	.40	.55	1.04	D2E10-472E	.40	.55	1.04	D2E20-472E
.0056	.18	.30	.42	D2E4-562E	.18	.30	.42	D2E6-562E	.40	.55	1.04	D2E10-562E	.40	.55	1.04	D2E20-562E
.0068	.18	.30	.42	D2E4-682E	.18	.30	.55	D2E6-682E	.40	.55	1.04	D2E10-682E	.40	.55	1.04	D2E20-682E
.0082	.18	.30	.42	D2E4-822E	.18	.30	.55	D2E6-822E	.40	.55	1.04	D2E10-822E	.40	.55	1.04	D2E20-822E
.01	.18	.30	.55	D2E4-103E	.18	.30	.55	D2E6-103E	.40	.55	1.04	D2E10-103E	.57	.73	1.24	D2E20-103E
.012	.18	.30	.55	D2E4-123E	.24	.37	.55	D2E6-123E	.40	.55	1.04	D2E10-123E	.57	.73	1.24	D2E20-123E
.015	.18	.30	.55	D2E4-153E	.24	.37	.55	D2E6-153E	.40	.55	1.04	D2E10-153E	.57	.73	1.24	D2E20-153E
.018	.18	.30	.55	D2E4-183E	.24	.37	.55	D2E6-183E	.40	.55	1.04	D2E10-183E	.57	.73	1.24	D2E20-183E
.022	.18	.30	.55	D2E4-223E	.30	.43	.55	D2E6-223E	.40	.55	1.04	D2E10-223E	.57	.73	1.75	D2E20-223E
.027	.24	.37	.55	D2E4-273E	.30	.43	.55	D2E6-273E	.40	.55	1.04	D2E10-273E	.57	.73	1.75	D2E20-273E
.033	.24	.37	.55	D2E4-333E	.30	.43	.67	D2E6-333E	.40	.55	1.04	D2E10-333E	.57	.73	1.75	D2E20-333E
.039	.24	.37	.55	D2E4-393E	.30	.43	.67	D2E6-393E	.40	.55	1.04	D2E10-393E	.57	.73	1.75	D2E20-393E
.047	.30	.43	.55	D2E4-473E	.30	.43	.67	D2E6-473E	.57	.73	1.24	D2E10-473E	.70	1.13	1.75	D2E20-473E
.056	.30	.43	.55	D2E4-563E	.30	.43	.82	D2E6-563E	.57	.73	1.24	D2E10-563E	.70	1.13	1.75	D2E20-563E
.068	.30	.43	.55	D2E4-683E	.30	.43	.82	D2E6-683E	.57	.73	1.24	D2E10-683E	.70	1.13	1.75	D2E20-683E
.082	.30	.43	.67	D2E4-823E	.40	.55	.82	D2E6-823E	.57	.73	1.24	D2E10-823E	.70	1.13	1.75	D2E20-823E
.10	.30	.43	.67	D2E4-104E	.40	.55	.82	D2E6-104E	.70	.94	1.24	D2E10-104E	.70	1.13	1.75	D2E20-104E
.12	.30	.43	.82	D2E4-124E	.40	.55	.82	D2E6-124E	.70	.94	1.24	D2E10-124E	.70	1.13	1.75	D2E20-124E
.15	.30	.43	.82	D2E4-154E	.40	.55	1.04	D2E6-154E	.70	.94	1.24	D2E10-154E	.80	1.13	1.75	D2E20-154E
.18	.40	.55	.82	D2E4-184E	.40	.55	1.04	D2E6-184E	.57	.73	1.75	D2E10-184E	.80	1.13	1.75	D2E20-184E
.22	.40	.55	.82	D2E4-224E	.40	.55	1.24	D2E6-224E	.57	.73	1.75	D2E10-224E	1.27	1.40	1.77	D2E20-224E
.25	.40	.55	.82	D2E4-254E	.57	.73	1.24	D2E6-254E	.57	.73	1.75	D2E10-254E	1.27	1.40	1.77	D2E20-254E
.27	.40	.55	.82	D2E4-274E	.57	.73	1.24	D2E6-274E	.57	.73	1.75	D2E10-274E	1.27	1.40	1.77	D2E20-274E
.33	.40	.55	1.04	D2E4-334E	.57	.73	1.24	D2E6-334E	.70	1.13	1.75	D2E10-334E	1.27	1.40	1.77	D2E20-334E
.39	.40	.55	1.24	D2E4-394E	.57	.73	1.24	D2E6-394E	.70	1.13	1.75	D2E10-394E				
.47	.40	.55	1.24	D2E4-474E	.57	.73	1.24	D2E6-474E	.70	1.13	1.75	D2E10-474E				
.50	.40	.55	1.24	D2E4-504E	.57	.73	1.24	D2E6-504E	.70	1.13	1.75	D2E10-504E				
.56	.57	.73	1.24	D2E4-564E	.57	.73	1.75	D2E6-564E	.70	1.13	1.75	D2E10-564E				
.68	.57	.73	1.24	D2E4-684E	.57	.73	1.75	D2E6-684E	.80	1.13	1.75	D2E10-684E				
.75	.57	.73	1.24	D2E4-754E	.57	.73	1.75	D2E6-754E	.80	1.13	1.75	D2E10-754E				
.82	.57	.73	1.24	D2E4-824E	.70	1.13	1.75	D2E6-824E	1.27	1.40	1.77	D2E10-824E				
1.0	.57	.73	1.24	D2E4-105E	.70	1.13	1.75	D2E6-105E	1.27	1.40	1.77	D2E10-105E				
1.2	.57	.73	1.75	D2E4-125E	.70	1.13	1.75	D2E6-125E	1.27	1.40	1.77	D2E10-125E				
1.5	.57	.73	1.75	D2E4-155E	.70	1.13	1.75	D2E6-155E	1.27	1.40	1.77	D2E10-155E				
1.8	.70	1.13	1.75	D2E4-185E	.80	1.13	1.75	D2E6-185E								
2.0	.70	1.13	1.75	D2E4-205E	.80	1.13	1.75	D2E6-205E								
3.0	.70	1.13	1.75	D2E4-305E	1.27	1.40	1.77	D2E6-305E								
4.0	.80	1.13	1.75	D2E4-405E	1.27	1.40	1.77	D2E6-405E								
5.0	1.27	1.40	1.77	D2E4-505E												
6.0	1.27	1.40	1.77	D2E4-605E												
8.0	1.27	1.40	1.77	D2E4-805E												
10.0	1.27	1.40	1.77	D2E4-106E												

TOLERANCE TABLE

Code Tolerance

A = ± 1% ♦

B = ± 2% ♦

C = ± 3% ♦

D = ± 5%

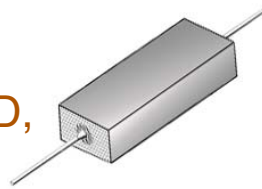
E = ± 10%

None = ± 20%

♦ = Temperature Stabilized

Note: Replace the last digit **E** with the desired tolerance code from the tolerance table. For an in-between value use the next larger value's dimensions. Custom sizes are readily available. All dimensions are in inches.

METALLIZED MYLAR HERMETICALLY SEALED, RECTANGULAR METAL CASED, CAPACITORS



DG
METALLIZED MYLAR
HERMETIC SEAL, RECTANG.
REGULAR SERIES

ORDERING DESCRIPTION

Capacitor, fixed: Metallized Mylar dielectric; extended foil construction; tin-plated copper-clad steel wire axial leads; encased in a hermetically sealed rectangular tin plated brass tube with soldered glass to metal end seals.

APPLICATION NOTES

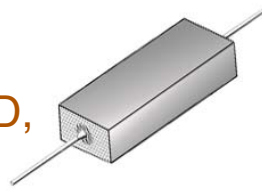
Metal encased capacitors are hermetically sealed and meet the moisture resistance, temperature and immersion cycling requirements of MIL-C-18312.

SELECTION AND ORDERING TABLES Select voltage rating, capacitance and tolerance, read Part Number to the right.

MFD	35VDC 20VAC				50VDC 40VAC				100VDC 70VAC				200VDC 120VAC			
	T	W	L	PART #	T	W	L	PART #	T	W	L	PART #	T	W	L	PART #
RATING	+ .015" - .005"	+ .015" - .005"	± .031"		+ .015" - .005"	+ .015" - .005"	± .031"		+ .015" - .005"	+ .015" - .005"	± .031"		+ .015" - .005"	+ .015" - .005"	± .031"	
.001	.22	.34	.531	DG.35-102E	.22	.34	.531	DG.5-102E	.22	.34	.563	DG1-102E	.22	.34	.563	DG2-102E
.0015	.22	.34	.531	DG.35-152E	.22	.34	.531	DG.5-152E	.22	.34	.563	DG1-152E	.22	.34	.563	DG2-152E
.0022	.22	.34	.531	DG.35-222E	.22	.34	.531	DG.5-222E	.22	.34	.563	DG1-222E	.22	.34	.563	DG2-222E
.0027	.22	.34	.531	DG.35-272E	.22	.34	.531	DG.5-272E	.22	.34	.563	DG1-272E	.22	.34	.563	DG2-272E
.0033	.22	.34	.531	DG.35-332E	.22	.34	.531	DG.5-332E	.22	.34	.563	DG1-332E	.22	.34	.563	DG2-332E
.0047	.22	.34	.531	DG.35-472E	.22	.34	.531	DG.5-472E	.22	.34	.563	DG1-472E	.22	.34	.563	DG2-472E
.0056	.22	.34	.531	DG.35-562E	.22	.34	.531	DG.5-562E	.22	.34	.563	DG1-562E	.22	.34	.563	DG2-562E
.0068	.22	.34	.531	DG.35-682E	.22	.34	.531	DG.5-682E	.22	.34	.563	DG1-682E	.22	.34	.563	DG2-682E
.0082	.22	.34	.531	DG.35-822E	.22	.34	.531	DG.5-822E	.22	.34	.563	DG1-822E	.22	.34	.563	DG2-822E
.01	.22	.34	.531	DG.35-103E	.22	.34	.531	DG.5-103E	.22	.34	.563	DG1-103E	.22	.34	.688	DG2-103E
.012	.22	.34	.531	DG.35-123E	.22	.34	.531	DG.5-123E	.22	.34	.563	DG1-123E	.22	.34	.688	DG2-123E
.015	.22	.34	.531	DG.35-153E	.22	.34	.531	DG.5-153E	.22	.34	.563	DG1-153E	.22	.34	.688	DG2-153E
.018	.22	.34	.531	DG.35-183E	.22	.34	.531	DG.5-183E	.22	.34	.563	DG1-183E	.22	.34	.688	DG2-183E
.022	.22	.34	.531	DG.35-223E	.22	.34	.531	DG.5-223E	.22	.34	.563	DG1-223E	.22	.34	.688	DG2-223E
.027	.22	.34	.531	DG.35-273E	.22	.34	.531	DG.5-273E	.22	.34	.563	DG1-273E	.22	.34	.688	DG2-273E
.033	.22	.34	.531	DG.35-333E	.22	.34	.531	DG.5-333E	.22	.34	.563	DG1-333E	.22	.34	.688	DG2-333E
.039	.22	.34	.531	DG.35-393E	.22	.34	.531	DG.5-393E	.22	.34	.563	DG1-393E	.22	.34	.688	DG2-393E
.047	.22	.34	.531	DG.35-473E	.22	.34	.531	DG.5-473E	.22	.34	.563	DG1-473E	.22	.34	.688	DG2-473E
.056	.22	.34	.531	DG.35-563E	.22	.34	.531	DG.5-563E	.22	.34	.563	DG1-563E	.22	.34	.688	DG2-563E
.068	.22	.34	.531	DG.35-683E	.22	.34	.531	DG.5-683E	.22	.34	.563	DG1-683E	.22	.34	.813	DG2-683E
.082	.22	.34	.531	DG.35-823E	.22	.34	.531	DG.5-823E	.22	.34	.563	DG1-823E	.22	.34	.813	DG2-823E
.10	.22	.34	.531	DG.35-104E	.22	.34	.531	DG.5-104E	.22	.34	.688	DG1-104E	.22	.34	.813	DG2-104E
.12	.22	.34	.531	DG.35-124E	.22	.34	.531	DG.5-124E	.22	.34	.688	DG1-124E	.22	.34	.938	DG2-124E
.15	.22	.34	.563	DG.35-154E	.22	.34	.625	DG.5-154E	.22	.34	.688	DG1-154E	.22	.34	1.125	DG2-154E
.18	.22	.34	.563	DG.35-184E	.22	.34	.625	DG.5-184E	.22	.34	.688	DG1-184E	.22	.34	1.125	DG2-184E
.22	.22	.34	.563	DG.35-224E	.22	.34	.625	DG.5-224E	.22	.34	.813	DG1-224E	.31	.41	.938	DG2-224E
.25	.22	.34	.563	DG.35-254E	.22	.34	.625	DG.5-254E	.22	.34	.813	DG1-254E	.31	.41	.938	DG2-254E
.27	.22	.34	.563	DG.35-274E	.22	.34	.625	DG.5-274E	.22	.34	.813	DG1-274E	.31	.41	.938	DG2-274E
.33	.22	.34	.563	DG.35-334E	.22	.34	.625	DG.5-334E	.22	.34	.813	DG1-334E	.31	.41	1.125	DG2-334E
.39	.22	.34	.563	DG.35-394E	.22	.34	.625	DG.5-394E	.22	.34	.938	DG1-394E	.31	.41	1.125	DG2-394E
.47	.22	.34	.563	DG.35-474E	.31	.41	.625	DG.5-474E	.22	.34	1.125	DG1-474E	.31	.41	1.313	DG2-474E
.50	.22	.34	.688	DG.35-504E	.31	.41	.625	DG.5-504E	.22	.34	1.125	DG1-504E	.31	.41	1.313	DG2-504E
.56	.22	.34	.688	DG.35-564E	.31	.41	.625	DG.5-564E	.22	.34	1.125	DG1-564E	.40	.57	1.125	DG2-564E
.68	.22	.34	.688	DG.35-684E	.31	.41	.625	DG.5-684E	.31	.41	.938	DG1-684E	.40	.57	1.125	DG2-684E
.75	.22	.34	.688	DG.35-754E	.31	.41	.625	DG.5-754E	.31	.41	.938	DG1-754E	.40	.57	1.125	DG2-754E
.82	.22	.34	.688	DG.35-824E	.31	.41	.781	DG.5-824E	.31	.41	.938	DG1-824E	.40	.57	1.313	DG2-824E
1.0	.22	.34	.688	DG.35-105E	.31	.41	.781	DG.5-105E	.31	.41	1.125	DG1-105E	.40	.57	1.563	DG2-105E
1.2	.22	.34	.688	DG.35-125E	.31	.41	.906	DG.5-125E	.31	.41	1.313	DG1-125E	.40	.57	1.813	DG2-125E
1.5	.31	.41	.688	DG.35-155E	.31	.41	.906	DG.5-155E	.31	.41	1.313	DG1-155E	.40	.57	1.813	DG2-155E
1.8	.31	.41	.688	DG.35-185E	.40	.57	1.063	DG.5-185E	.40	.57	1.125	DG1-185E	.50	.65	1.563	DG2-185E
2.0	.31	.41	.688	DG.35-205E	.40	.57	1.063	DG.5-205E	.40	.57	1.125	DG1-205E	.50	.65	1.563	DG2-205E
3.0	.31	.41	.813	DG.35-305E	.40	.57	1.063	DG.5-305E	.40	.57	1.313	DG1-305E	.50	.65	2.313	DG2-305E
4.0	.31	.41	.938	DG.35-405E	.50	.65	1.313	DG.5-405E	.50	.65	1.813	DG1-405E	.60	.80	2.313	DG2-405E
5.0	.40	.57	.938	DG.35-505E	.50	.65	1.313	DG.5-505E	.50	.65	1.813	DG1-505E	.60	.80	2.313	DG2-505E
6.0	.40	.57	.938	DG.35-605E	.50	.65	1.313	DG.5-605E	.50	.65	2.062	DG1-605E	.60	.80	2.062	DG2-605E
8.0	.40	.57	1.125	DG.35-805E	.50	.65	1.313	DG.5-805E	.50	.65	2.062	DG1-805E	.60	.80	2.062	DG2-805E
10.0	.40	.57	1.125	DG.35-106E	.60	.80	1.313	DG.5-106E	.60	.80	2.062	DG1-106E	.60	.80	2.062	DG2-106E
12.0	.40	.57	1.313	DG.35-126E	.60	.80	1.313	DG.5-126E	.60	.80	2.062	DG1-126E	.60	.80	2.062	DG2-126E
15.0	.40	.57	1.313	DG.35-156E	.60	.80	1.781	DG.5-156E	.60	.80	2.313	DG1-156E	.60	.80	2.313	DG2-156E
18.0	.50	.65	1.313	DG.35-186E												
20.0	.50	.65	1.313	DG.35-206E												
30.0	.60	.80	1.313	DG.35-306E												

Note: Replace the last digit **E** with the desired tolerance code from the tolerance table. For an in-between value use the next larger value's dimensions. Custom sizes are readily available. All dimensions are in inches.

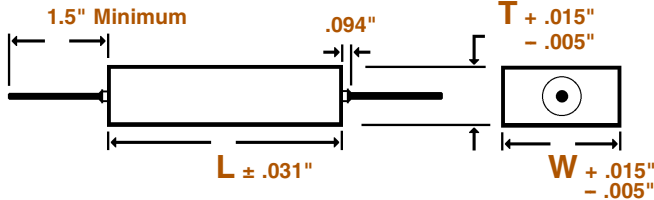
METALLIZED MYLAR HERMETICALLY SEALED, RECTANGULAR METAL CASED, CAPACITORS



DG
METALLIZED MYLAR
HERMETIC SEAL, RECTANG.
REGULAR SERIES

DIMENSIONS See tables for specific T, W, L values.

WIRE SIZE (Length 1.5" Minimum)



BODY SIZE (T) x (W)	WIRE SIZE	
	AWG No.	Diameter
.22" x .34"	24	0.020"
.31" x .41"	22	0.025"
.40" x .57" & Larger	20	0.032"

SELECTION AND ORDERING TABLES Select voltage rating, capacitance and tolerance, read Part Number to the right.

MFD	400VDC 160VAC				600VDC 230VAC				1000VDC 360VAC				
	RATING	T	W	L	PART #	T	W	L	PART #	T	W	L	PART #
	+ .015" - .005"	+ .015" - .005"	± .031"		+ .015" - .005"	+ .015" - .005"	± .031"		+ .015" - .005"	+ .015" - .005"	± .031"		
.001	.22	.34	.563	DG4-102E	.22	.34	.563	DG6-102E	.22	.34	1.125	DG10-102E	
.0012	.22	.34	.563	DG4-122E	.22	.34	.563	DG6-122E	.22	.34	1.125	DG10-122E	
.0015	.22	.34	.563	DG4-152E	.22	.34	.563	DG6-152E	.22	.34	1.125	DG10-152E	
.0018	.22	.34	.563	DG4-182E	.22	.34	.563	DG6-182E	.22	.34	1.125	DG10-182E	
.0022	.22	.34	.563	DG4-222E	.22	.34	.563	DG6-222E	.22	.34	1.125	DG10-222E	
.0027	.22	.34	.563	DG4-272E	.22	.34	.563	DG6-272E	.22	.34	1.125	DG10-272E	
.0033	.22	.34	.563	DG4-332E	.22	.34	.563	DG6-332E	.22	.34	1.125	DG10-332E	
.0039	.22	.34	.563	DG4-392E	.22	.34	.563	DG6-392E	.22	.34	1.125	DG10-392E	
.0047	.22	.34	.563	DG4-472E	.22	.34	.563	DG6-472E	.22	.34	1.125	DG10-472E	
.0056	.22	.34	.563	DG4-562E	.22	.34	.563	DG6-562E	.22	.34	1.125	DG10-562E	
.0068	.22	.34	.563	DG4-682E	.22	.34	.563	DG6-682E	.22	.34	1.125	DG10-682E	
.0082	.22	.34	.563	DG4-822E	.22	.34	.563	DG6-822E	.22	.34	1.125	DG10-822E	
.01	.22	.34	.688	DG4-103E	.22	.34	.688	DG6-103E	.22	.34	1.125	DG10-103E	
.012	.22	.34	.688	DG4-123E	.22	.34	.688	DG6-123E	.31	.41	1.125	DG10-123E	
.015	.22	.34	.688	DG4-153E	.22	.34	.688	DG6-153E	.31	.41	1.125	DG10-153E	
.018	.22	.34	.688	DG4-183E	.22	.34	.688	DG6-183E	.31	.41	1.125	DG10-183E	
.022	.22	.34	.688	DG4-223E	.22	.34	.813	DG6-223E	.31	.41	1.125	DG10-223E	
.027	.22	.34	.688	DG4-273E	.22	.34	.813	DG6-273E	.40	.57	1.125	DG10-273E	
.033	.22	.34	.688	DG4-333E	.22	.34	.938	DG6-333E	.40	.57	1.125	DG10-333E	
.039	.22	.34	.813	DG4-393E	.22	.34	1.125	DG6-393E	.40	.57	1.125	DG10-393E	
.047	.22	.34	.813	DG4-473E	.22	.34	1.125	DG6-473E	.40	.57	1.125	DG10-473E	
.056	.22	.34	.813	DG4-563E	.31	.41	.938	DG6-563E	.50	.65	1.125	DG10-563E	
.068	.22	.34	.938	DG4-683E	.31	.41	.938	DG6-683E	.50	.65	1.125	DG10-683E	
.082	.22	.34	1.125	DG4-823E	.31	.41	1.125	DG6-823E	.50	.65	1.500	DG10-823E	
.10	.22	.34	1.125	DG4-104E	.31	.41	1.125	DG6-104E	.50	.65	1.500	DG10-104E	
.12	.31	.41	.938	DG4-124E	.31	.41	1.313	DG6-124E	.50	.65	1.500	DG10-124E	
.15	.31	.41	.938	DG4-154E	.40	.57	1.125	DG6-154E	.50	.65	1.500	DG10-154E	
.18	.31	.41	1.125	DG4-184E	.40	.57	1.125	DG6-184E	.60	.80	1.500	DG10-184E	
.22	.31	.41	1.313	DG4-224E	.40	.57	1.313	DG6-224E	.60	.80	1.500	DG10-224E	
.25	.31	.41	1.313	DG4-254E	.40	.57	1.313	DG6-254E	.60	.80	1.813	DG10-254E	
.27	.31	.41	1.313	DG4-274E	.40	.57	1.313	DG6-274E	.60	.80	1.813	DG10-274E	
.33	.40	.57	1.125	DG4-334E	.40	.57	1.562	DG6-334E	.60	.80	1.813	DG10-334E	
.39	.40	.57	1.125	DG4-394E	.40	.57	1.813	DG6-394E	.60	.80	2.625	DG10-394E	
.47	.40	.57	1.313	DG4-474E	.50	.65	1.562	DG6-474E	.60	.80	2.625	DG10-474E	
.50	.40	.57	1.313	DG4-504E	.50	.65	1.562	DG6-504E	.60	.80	2.625	DG10-504E	
.56	.40	.57	1.313	DG4-564E	.50	.65	1.813	DG6-564E	.60	.80	2.625	DG10-564E	
.68	.40	.57	1.563	DG4-684E	.50	.65	2.062	DG6-684E	.60	.80	3.375	DG10-684E	
.75	.40	.57	1.813	DG4-754E	.50	.65	2.062	DG6-754E	.60	.80	3.375	DG10-754E	
.82	.40	.57	1.813	DG4-824E	.50	.65	2.313	DG6-824E	.60	.80	3.375	DG10-824E	
1.0	.50	.65	1.563	DG4-105E	.60	.80	2.062	DG6-105E					
1.2	.50	.65	2.063	DG4-125E									
1.5	.50	.65	2.063	DG4-155E									
1.8	.60	.80	1.813	DG4-185E									
2.0	.60	.80	1.813	DG4-205E									

TOLERANCE TABLE

Code Tolerance

A = ± 1% ♦

B = ± 2% ♦

C = ± 3% ♦

D = ± 5%

E = ± 10%

None = ± 20%

♦ = Temperature

Stabilized

HARDWARE

For use with metal tubes. Add the Code number to the end of the Part Number, include the dash ("-").

CODE DESCRIPTION

- 1 = Tangential Bracket

- 2 = Threaded Neck Term.

- 3 = Flat Lug Terminal

- 4 = 90° Lug Terminal

- 5 = Insulating Sleeve

- 6 = Stud Mounting

Add .015" to the capacitors dimensions for the Insulating Sleeve.

Codes may be combined.

Example:

- 35 = Flat Lug Terminal

with Insulating Sleeve.

(Place lower number first)

Note: Replace the last digit E with the desired tolerance code from the tolerance table. For an in-between value use the next larger value's dimensions. Custom sizes are readily available. All dimensions are in inches.

METALLIZED MYLAR HERMETICALLY SEALED, ROUND METAL CASED CAPACITORS



DL
METALLIZED MYLAR
HERMETIC SEAL, ROUND
REGULAR SERIES

ORDERING DESCRIPTION

Capacitor, fixed: Metallized Mylar dielectric; extended foil construction; tin-plated copper-clad steel wire axial leads; encased in a hermetically sealed round tin plated brass tube with soldered glass to metal end seals.

APPLICATION NOTES

Metal encased capacitors are hermetically sealed and meet the moisture resistance, temperature and immersion cycling requirements of MIL-C-18312.

SELECTION AND ORDERING TABLES Select voltage rating, capacitance and tolerance, read Part Number to the right.

MFD	35VDC 20VAC			50VDC 40VAC			100VDC 70VAC			200VDC 120VAC			
	RATING	D	L	PART #	D	L	PART #	D	L	PART #	D	L	PART #
	+ .015" - .005"	± .031"		+ .015" - .005"	± .031"		+ .015" - .005"	± .031"		+ .015" - .005"	± .031"		
.001	.195	.531	DL.35-102E	.235	.531	DL.5-102E	.235	.531	DL1-102E	.235	.531	DL2-102E	
.0027	.195	.531	DL.35-272E	.235	.531	DL.5-272E	.235	.531	DL1-272E	.235	.531	DL2-272E	
.0033	.195	.531	DL.35-332E	.235	.531	DL.5-332E	.235	.531	DL1-332E	.235	.531	DL2-332E	
.0056	.195	.531	DL.35-562E	.235	.531	DL.5-562E	.235	.531	DL1-562E	.235	.531	DL2-562E	
.0068	.195	.531	DL.35-682E	.235	.531	DL.5-682E	.235	.531	DL1-682E	.235	.531	DL2-682E	
.0082	.195	.531	DL.35-822E	.235	.531	DL.5-822E	.235	.531	DL1-822E	.235	.531	DL2-822E	
.01	.195	.531	DL.35-103E	.235	.531	DL.5-103E	.175	.625	DL1-103E	.175	.625	DL2-103E	
.012	.195	.531	DL.35-123E	.235	.531	DL.5-123E	.175	.625	DL1-123E	.175	.625	DL2-123E	
.015	.195	.531	DL.35-153E	.235	.531	DL.5-153E	.175	.625	DL1-153E	.175	.625	DL2-153E	
.018	.195	.531	DL.35-183E	.235	.531	DL.5-183E	.175	.625	DL1-183E	.175	.625	DL2-183E	
.022	.195	.531	DL.35-223E	.235	.531	DL.5-223E	.175	.625	DL1-223E	.195	.625	DL2-223E	
.027	.195	.531	DL.35-273E	.235	.531	DL.5-273E	.175	.625	DL1-273E	.235	.625	DL2-273E	
.033	.195	.531	DL.35-333E	.235	.531	DL.5-333E	.175	.625	DL1-333E	.235	.625	DL2-333E	
.039	.195	.531	DL.35-393E	.235	.531	DL.5-393E	.175	.625	DL1-393E	.235	.625	DL2-393E	
.047	.195	.531	DL.35-473E	.235	.531	DL.5-473E	.175	.625	DL1-473E	.235	.625	DL2-473E	
.056	.195	.531	DL.35-563E	.235	.531	DL.5-563E	.195	.625	DL1-563E	.235	.813	DL2-563E	
.068	.195	.531	DL.35-683E	.235	.531	DL.5-683E	.195	.625	DL1-683E	.235	.813	DL2-683E	
.082	.195	.531	DL.35-823E	.235	.531	DL.5-823E	.235	.625	DL1-823E	.312	.813	DL2-823E	
.10	.195	.531	DL.35-104E	.235	.531	DL.5-104E	.235	.625	DL1-104E	.312	.813	DL2-104E	
.12	.195	.531	DL.35-124E	.235	.531	DL.5-124E	.235	.625	DL1-124E	.312	.813	DL2-124E	
.15	.235	.531	DL.35-154E	.235	.625	DL.5-154E	.235	.813	DL1-154E	.312	.938	DL2-154E	
.18	.235	.531	DL.35-184E	.235	.625	DL.5-184E	.235	.813	DL1-184E	.312	.938	DL2-184E	
.22	.235	.531	DL.35-224E	.235	.625	DL.5-224E	.312	.813	DL1-224E	.312	1.125	DL2-224E	
.25	.235	.531	DL.35-254E	.235	.625	DL.5-254E	.312	.813	DL1-254E	.312	1.125	DL2-254E	
.27	.312	.531	DL.35-274E	.235	.625	DL.5-274E	.312	.813	DL1-274E	.312	1.125	DL2-274E	
.33	.312	.531	DL.35-334E	.312	.625	DL.5-334E	.312	.813	DL1-334E	.400	.938	DL2-334E	
.39	.312	.531	DL.35-394E	.312	.625	DL.5-394E	.312	.813	DL1-394E	.400	1.125	DL2-394E	
.47	.312	.531	DL.35-474E	.312	.625	DL.5-474E	.312	.938	DL1-474E	.400	1.125	DL2-474E	
.50	.312	.625	DL.35-504E	.312	.625	DL.5-504E	.312	.938	DL1-504E	.400	1.125	DL2-504E	
.56	.312	.625	DL.35-564E	.312	.625	DL.5-564E	.312	1.125	DL1-564E	.400	1.313	DL2-564E	
.68	.312	.625	DL.35-684E	.312	.781	DL.5-684E	.312	1.125	DL1-684E	.500	1.125	DL2-684E	
.75	.312	.625	DL.35-754E	.312	.781	DL.5-754E	.400	.938	DL1-754E	.500	1.125	DL2-754E	
.82	.312	.625	DL.35-824E	.312	.781	DL.5-824E	.400	.938	DL1-824E	.500	1.313	DL2-824E	
1.0	.312	.625	DL.35-105E	.400	.781	DL.5-105E	.400	1.125	DL1-105E	.500	1.313	DL2-105E	
1.2	.312	.625	DL.35-125E	.400	.781	DL.5-125E	.500	1.125	DL1-125E	.562	1.813	DL2-125E	
1.5	.400	.625	DL.35-155E	.400	.781	DL.5-155E	.500	1.125	DL1-155E	.562	1.813	DL2-155E	
1.8	.400	.625	DL.35-185E	.400	.906	DL.5-185E	.500	1.125	DL1-185E	.562	1.813	DL2-185E	
2.0	.400	.625	DL.35-205E	.400	.906	DL.5-205E	.500	1.125	DL1-205E	.562	1.813	DL2-205E	
3.0	.400	.813	DL.35-305E	.500	.906	DL.5-305E	.500	1.313	DL1-305E	.670	1.813	DL2-305E	
4.0	.400	.938	DL.35-405E	.562	1.063	DL.5-405E	.562	1.563	DL1-405E	.750	2.313	DL2-405E	
5.0	.400	.938	DL.35-505E	.562	1.063	DL.5-505E	.562	1.563	DL1-505E	.750	2.313	DL2-505E	
6.0	.500	.938	DL.35-605E	.562	1.313	DL.5-605E	.670	1.813	DL1-605E	1.000	2.062	DL2-605E	
8.0	.500	1.125	DL.35-805E	.562	1.313	DL.5-805E	.670	1.813	DL1-805E	1.000	2.062	DL2-805E	
10.0	.500	1.125	DL.35-106E	.670	1.313	DL.5-106E	.750	1.813	DL1-106E	1.000	2.563	DL2-106E	
12.0	.500	1.313	DL.35-126E	.670	1.313	DL.5-126E	.750	2.062	DL1-126E				
15.0	.562	1.313	DL.35-156E	.750	1.313	DL.5-156E	.750	2.313	DL1-156E				
20.0	.562	1.313	DL.35-206E	.750	1.813	DL.5-206E	1.000	2.313	DL1-206E				
30.0	.670	1.313	DL.35-306E	1.000	1.813	DL.5-306E							
40.0	.750	1.313	DL.35-406E	1.000	1.813	DL.5-406E							
50.0	1.000	1.563	DL.35-506E										
75.0	1.000	1.813	DL.35-756E										
100.0	1.000	2.313	DL.35-107E										

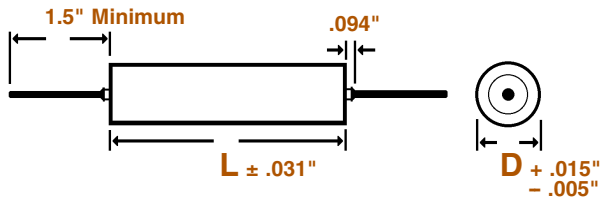
Note: Replace the last digit **E** with the desired tolerance code from the tolerance table. For an in-between value use the next larger value's dimensions. Custom sizes are readily available. All dimensions are in inches.

METALLIZED MYLAR HERMETICALLY SEALED, ROUND METAL CASED CAPACITORS



DL
METALLIZED MYLAR
HERMETIC SEAL, ROUND
REGULAR SERIES

DIMENSIONS See tables for specific **D**, **L** values.



WIRE SIZE (Length 1.5" Minimum)

BODY DIAMETER (D)	WIRE SIZE	
	AWG No.	Diameter
.175" & .195"	24	0.020"
.235" & .312"	22	0.025"
.400" & Larger	20	0.032"

SELECTION AND ORDERING TABLES Select voltage rating, capacitance and tolerance, read Part Number to the right.

MFD	400VDC 160VAC			600VDC 230VAC			1000VDC 360VAC			
	RATING	D	L	PART #	D	L	PART #	D	L	PART #
		+ .015" - .005"	± .031"		+ .015" - .005"	± .031"		+ .015" - .005"	± .031"	
.001	.235	.531	DG4-102E	.235	.531	DL6-102E	.312	1.125	DL10-102E	
.0012	.235	.531	DG4-122E	.235	.531	DL6-122E	.312	1.125	DL10-122E	
.0015	.235	.531	DG4-152E	.235	.531	DL6-152E	.312	1.125	DL10-152E	
.0018	.235	.531	DG4-182E	.235	.531	DL6-182E	.312	1.125	DL10-182E	
.0022	.235	.531	DG4-222E	.235	.531	DL6-222E	.312	1.125	DL10-222E	
.0027	.235	.531	DG4-272E	.235	.531	DL6-272E	.312	1.125	DL10-272E	
.0033	.235	.531	DG4-332E	.235	.531	DL6-332E	.312	1.125	DL10-332E	
.0039	.235	.531	DG4-392E	.235	.531	DL6-392E	.312	1.125	DL10-392E	
.0047	.235	.531	DG4-472E	.235	.531	DL6-472E	.312	1.125	DL10-472E	
.0056	.235	.531	DG4-562E	.235	.531	DL6-562E	.312	1.125	DL10-562E	
.0068	.235	.531	DG4-682E	.235	.531	DL6-682E	.312	1.125	DL10-682E	
.0082	.235	.531	DG4-822E	.235	.531	DL6-822E	.312	1.125	DL10-822E	
.01	.235	.625	DG4-103E	.235	.813	DL6-103E	.312	1.125	DL10-103E	
.012	.235	.625	DG4-123E	.235	.813	DL6-123E	.312	1.125	DL10-123E	
.015	.235	.625	DG4-153E	.235	.813	DL6-153E	.400	1.125	DL10-153E	
.018	.235	.625	DG4-183E	.312	.813	DL6-183E	.400	1.125	DL10-183E	
.022	.235	.625	DG4-223E	.312	.813	DL6-223E	.400	1.125	DL10-223E	
.027	.235	.813	DG4-273E	.312	.813	DL6-273E	.400	1.125	DL10-273E	
.033	.235	.813	DG4-333E	.312	.813	DL6-333E	.500	1.125	DL10-333E	
.039	.312	.813	DG4-393E	.312	.938	DL6-393E	.500	1.125	DL10-393E	
.047	.312	.813	DG4-473E	.312	.938	DL6-473E	.500	1.125	DL10-473E	
.056	.312	.813	DG4-563E	.312	1.125	DL6-563E	.562	1.125	DL10-563E	
.068	.312	.813	DG4-683E	.312	1.125	DL6-683E	.562	1.125	DL10-683E	
.082	.312	.938	DG4-823E	.400	.938	DL6-823E	.562	1.500	DL10-823E	
.10	.312	.938	DG4-104E	.400	1.125	DL6-104E	.562	1.500	DL10-104E	
.12	.312	1.125	DG4-124E	.400	1.125	DL6-124E	.562	1.500	DL10-124E	
.15	.400	.938	DG4-154E	.500	1.125	DL6-154E	.670	1.500	DL10-154E	
.18	.400	.938	DG4-184E	.500	1.125	DL6-184E	.670	1.500	DL10-184E	
.22	.400	1.125	DG4-224E	.500	1.125	DL6-224E	.750	1.500	DL10-224E	
.25	.400	1.313	DG4-254E	.562	1.313	DL6-254E	.750	1.500	DL10-254E	
.27	.400	1.313	DG4-274E	.562	1.313	DL6-274E	.750	1.500	DL10-274E	
.33	.400	1.313	DG4-334E	.562	1.313	DL6-334E	.750	1.875	DL10-334E	
.39	.500	1.125	DG4-394E	.562	1.813	DL6-394E	.750	1.875	DL10-394E	
.47	.500	1.313	DG4-474E	.562	1.813	DL6-474E	1.000	1.875	DL10-474E	
.50	.500	1.313	DG4-504E	.562	1.813	DL6-504E	1.000	1.875	DL10-504E	
.56	.500	1.313	DG4-564E	.562	1.813	DL6-564E	1.000	1.875	DL10-564E	
.68	.562	1.313	DG4-684E	.670	1.813	DL6-684E	1.000	1.875	DL10-684E	
.75	.562	1.313	DG4-754E	.670	1.813	DL6-754E	1.000	1.875	DL10-754E	
.82	.562	1.813	DG4-824E	.670	1.813	DL6-824E	1.000	2.625	DL10-824E	
1.0	.562	1.813	DG4-105E	.750	1.813	DL6-105E	1.000	2.625	DL10-105E	
1.2	.670	1.813	DG4-125E	1.000	1.813	DL6-125E	1.000	2.625	DL10-125E	
1.5	.670	1.813	DG4-155E	1.000	1.813	DL6-155E				
1.8	.750	1.813	DG4-185E	1.000	2.063	DL6-185E				
2.0	.750	1.813	DG4-205E	1.000	2.063	DL6-205E				
3.0	1.000	1.813	DG4-305E							
4.0	1.000	2.313	DG4-405E							
5.0	1.000	2.313	DG4-505E							

TOLERANCE TABLE

Code	Tolerance
A	± 1% ♦
B	± 2% ♦
C	± 3% ♦
D	± 5%
E	± 10%
None	± 20%

♦ = Temperature Stabilized

HARDWARE

For use with metal tubes. Add the Code number to the end of the Part Number, include the dash ("-").

CODE	DESCRIPTION
- 1	Tangential Bracket
- 2	Threaded Neck Term.
- 3	Flat Lug Terminal
- 4	90° Lug Terminal
- 5	Insulating Sleeve
- 6	Stud Mounting

Add .015" to the capacitors dimensions for the Insulating Sleeve.

Codes may be combined. Example:
- 35 = Flat Lug Terminal with Insulating Sleeve. (Place lower number first)

Note: Replace the last digit **E** with the desired tolerance code from the tolerance table. For an in-between value use the next larger value's dimensions. Custom sizes are readily available. All dimensions are in inches.

METALLIZED MYLAR CAPACITORS PARAMETRIC TREND CURVES AND ACCEPTANCE CRITERIA

SERIES **D**

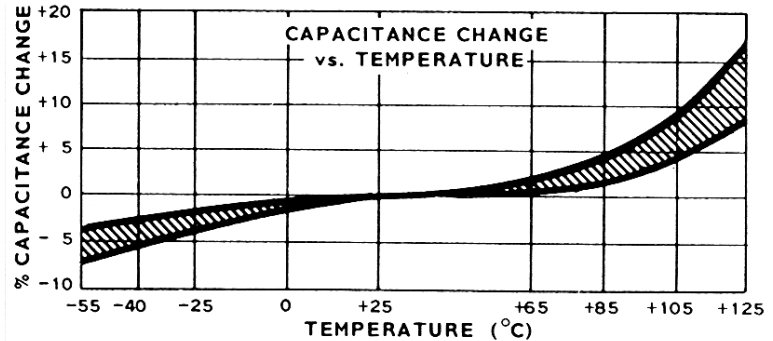
CAPACITANCE

Reference MIL-STD-202, Method 305
Test Frequency: 1000 Hz
Temperature: +25°C

Capacitance Change Over
Temperature.

Acceptance Limits:

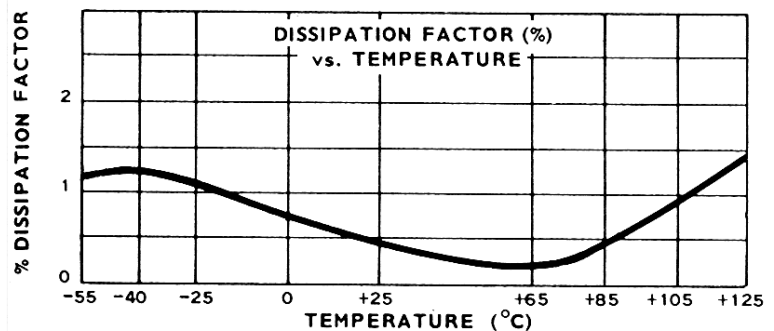
- @ -55°C = -7% Maximum Change
- @ +85°C = +5% Maximum Change
- @ +125°C = ±16% Maximum Change



DISSIPATION FACTOR

Reference MIL-STD-202,
Method 306
Test Frequency: 1000 Hz
Temperature: +25°C

Acceptance Limit: 0.65% Maximum

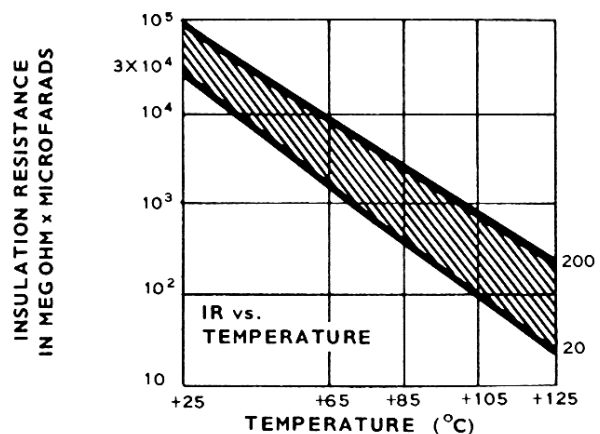


INSULATION RESISTANCE

Reference MIL-STD-202, Method 302
Electrification shall be at rated voltage
or 500 VDC, whichever is less and for
a time not greater than 2 minutes.

Acceptance Limits:

Test Temperature	Megs x μ f Minimum	Megohms Need not exceed
@ +25°C	10,000	30,000
@ +85°C	100	1,000
@ +125°C	10	100



VOLTAGE RATING

100% of listed voltage rating from -55°C to +85°C,
derate linearly to 50% of the listed voltage rating at +125°C.

VOLTAGE TEST

Reference MIL-STD-202, Method 301. Surge current is limited to 1 ampere maximum. Voltage applied for 1 minute (maximum) @ +25°C. Ground test is performed terminal to case (where the case is not a terminal) at 200% of the DC voltage rating. Dielectric strength test is performed terminal to terminal at 150% of the DC voltage rating.