

Datasheet

**RS Pro Magnetic Buzzer**

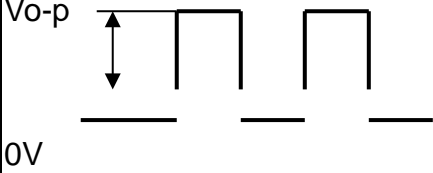
Stock No. 7542053



**A. SCOPE**

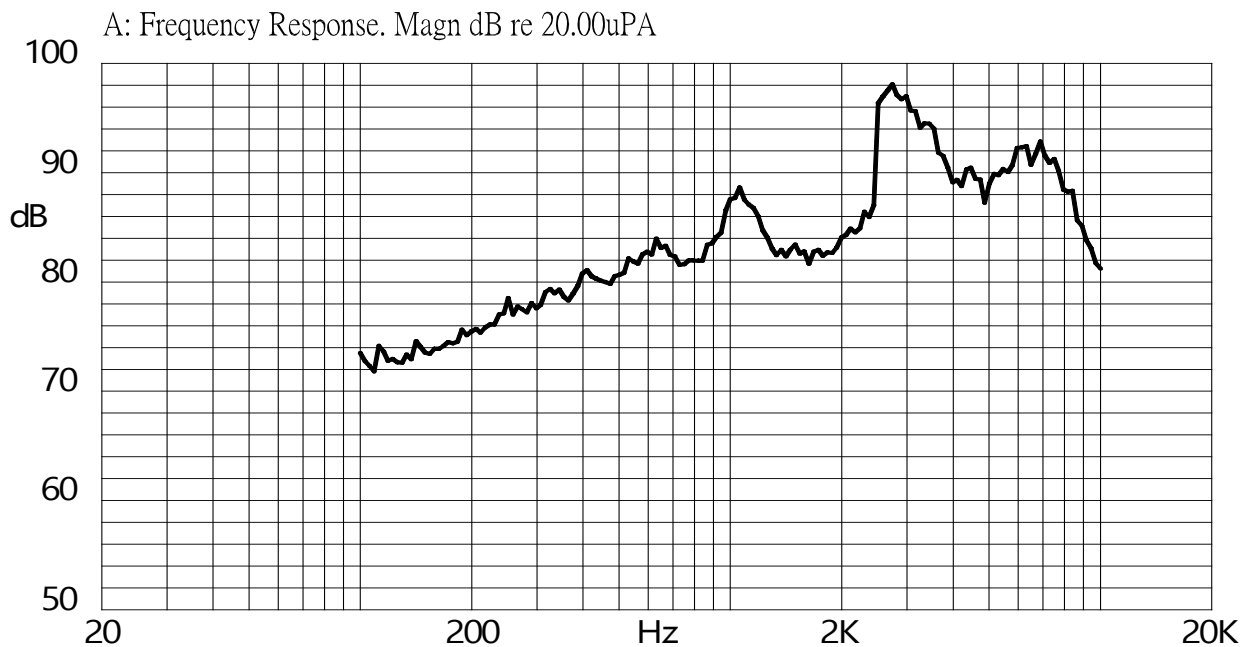
This specification applies magnetic buzzer, 7542053

**B. SPECIFICATION**

No.	Item	Unit	Specification	Condition
1	Rated Voltage	Vo-p	3.6	
2	Operating Volt.	Vo-p	3.0 ~ 5.0	
3	Mean Current	mA	Max. 80	Applying rated voltage, 2730Hz square wave, 1/2 duty
4	Coil Resistance	$\Omega$	20 $\pm$ 3	

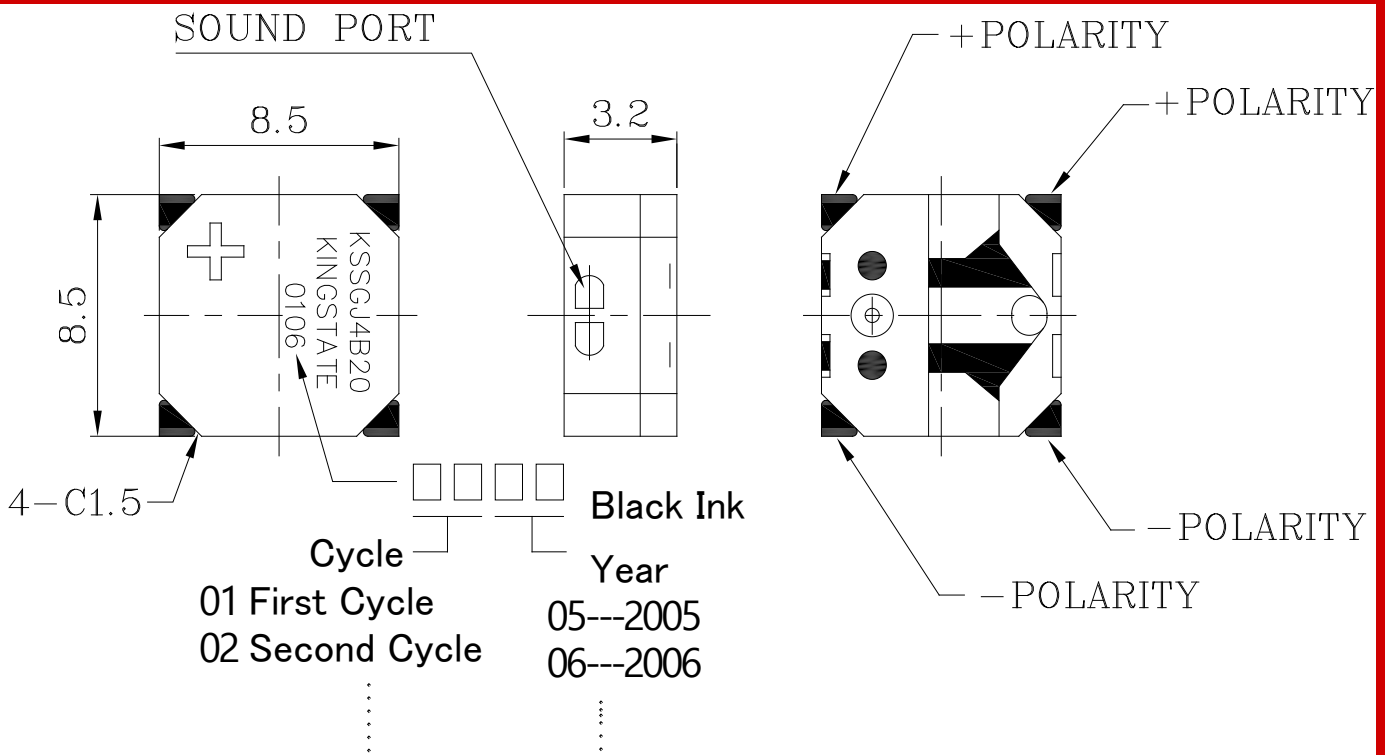
5	Sound Output	dBA	Min.90 (Typical 97)	Distance at 5cm (A-weight). Applying rated voltage 2730Hz,square wave, 1/2duty
6	Rated Frequency	Hz	2730	
7	Operating Temp.	°C	-30 ~ +70	
8	Storage Temp.	°C	-40 ~ +85	
9	Dimension	mm	L8.5 x W8.5 x H3.2	See attached drawing.
10	Weight	gram	0.7	
11	Material		L.C.P (White)	
12	Terminal		SMD type (/Plating Au)	See attached drawing.
13	Environmental Protection Regulation		RoHS	

### C. TYPICAL FREQUENCY RESPONSE CURVE



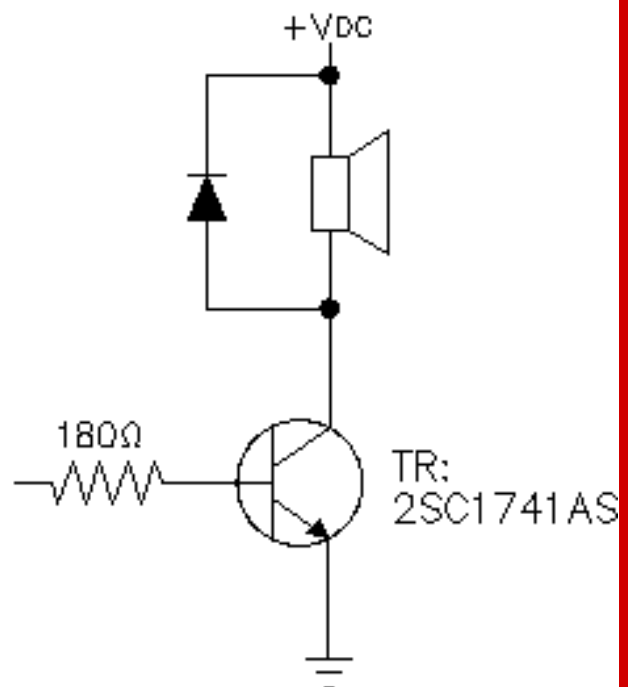
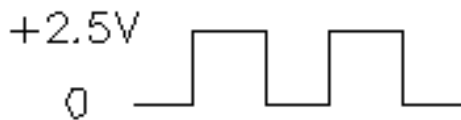
### D. APPEARANCE DRAWING





**Tol: ±0.5**  
**Unit: mm**

### E. MEASUREMENT METHOD



### F. MECHANICAL CHARACTERISTICS



No.	Item	Test condition	Evaluation standard
1	Solderability	Lead terminals are immersed in solder bath of $+270\pm 5^{\circ}\text{C}$ for $3\pm 1$ second.	95% surface of lead pads must be covered with fresh solder
2	Soldering Heat Resistance	The product is followed the reflow temperature curve to test its reflow thermostability.	No interference in operation
3	Terminal Mechanical Strength	Lead pads shall be soldered on the pc board, and the force 9.8N (1.0kg) shall be applied behind the part for 10 seconds.	No damage and cutting off
4	Vibration	Buzzer shall be measured after being applied vibration of amplitude of 1.5mm with 10 to 55hz band of vibration frequency to each of 3 per-pendicular directions for 2 hours.	After the test the part shall meet specifications with-out any damage in appearance and
5	Drop test	The part only shall be dropped from a height of 75cm onto a 40mm thick wooden board 3 times in 3 axes (X.Y.Z). (a total of 9 times).	the SPL should be in $\pm 10\text{dBA}$ compared with initial one.

## G. RELIABILITY TEST

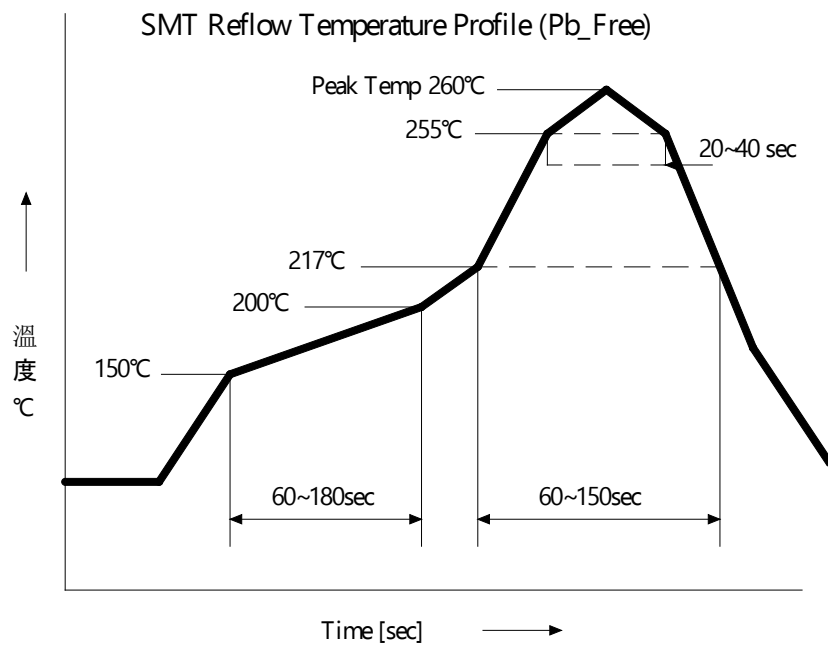
No.	Item	Test condition	
1	Operating life test	<p>1.Continuous life test</p> <p>The part shall be subjected to 72 hours at <math>+55^{\circ}\text{C}</math> with 3.6V , 2730Hz applied.</p> <p>2.Intermittent life test</p> <p>A duty cycle of 1 minute on, 1 minutes off, a minimum of 10000 times at room temp.( <math>+25\pm 10^{\circ}\text{C}</math>) with 3.6V , 2730Hz applied.</p>	<p>After the test the part shall meet specifications with-out any degradation in</p>

### TEST CONDITION.

Standard Test Condition: a) Temperature :  $+5 \sim +35^{\circ}\text{C}$  b) Humidity : 45-85% c) Pressure : 860-1060mbar  
Judgment Test Condition: a) Temperature :  $+25 \pm 2^{\circ}\text{C}$  b) Humidity : 60-70% c) Pressure : 860-1060mbar



## H. Recommended Temperature Profile For Reflow Oven



## I. Recommended land pattern

