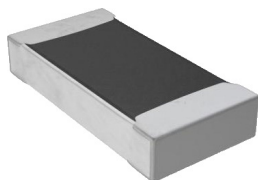


Surface Mount Fuse 1206

multicomp **PRO**



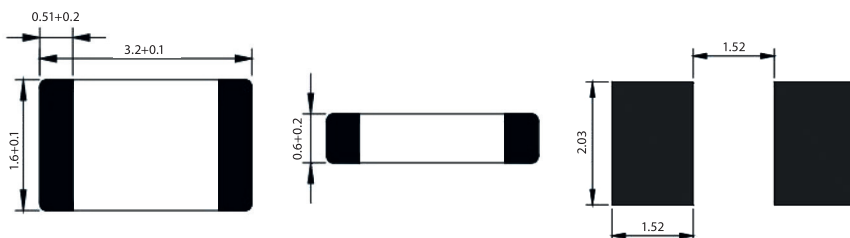
Features

- Ceramic construction SMD fuses
- Silver end caps, plated with nickel and tin
- 1206 foot print
- Fast blow and slow blow options
- Supplied taped on a reel
- UL Approved (UL248-14)

Specifications

Voltage Rating	: Fast Blow - 32V/250mA - 20A 72V/250mA - 4A 32V/4.5A - 30A Quick Blow - 32V/500mA - 12A 72V/500mA - 4A 45V/4.5A - 7A 32V/8A - 30A
Breaking Capacity	: 50A @ 32V DC
Soldering Parameter	: Wave Soldering - 260°C ≤ 10 seconds Hand Soldering - 300°C ≤ 2 seconds
Operating Temperature	: -55°C to +125°C
Storage Conditions	: +10°C to +60°C

Diagram



Dimensions : Millimetres

Part Number Table

Description	I ² T	Part Number
SMD Fuse, 1206, Fast Blow, 1A	0.1	MCCFB1206TFF/1
SMD Fuse, 1206, Fast Blow, 1.5A	0.15	MCCFB1206TFF/1.5
SMD Fuse, 1206, Fast Blow, 2A	0.41	MCCFB1206TFF/2
SMD Fuse, 1206, Fast Blow, 2.5A	0.65	MCCFB1206TFF/2.5
SMD Fuse, 1206, Fast Blow, 3A	1.39	MCCFB1206TFF/3
SMD Fuse, 1206, Fast Blow, 4A	1.73	MCCFB1206TFF/4
SMD Fuse, 1206, Fast Blow, 5A	2.89	MCCFB1206TFF/5
SMD Fuse, 1206, Fast Blow, 6A	-	MCCFB1206TFF/6

Newark.com/multicomp-pro
Farnell.com/multicomp-pro
Element14.com/multicomp-pro

multicomp **PRO**

Surface Mount Fuse 1206

multicomp^{PRO}

Description	I ² T	Part Number
SMD Fuse, 1206, Fast Blow, 7A	5.68	MCCFB1206TFF/7
SMD Fuse, 1206, Fast Blow, 8A	8	MCCFB1206TFF/8
SMD Fuse, 1206, Fast Blow, 10A	9.5	MCCFB1206TFF/10
SMD Fuse, 1206, Fast Blow, 12A	11.5	MCCFB1206TFF/12
SMD Fuse, 1206, Fast Blow, 15A	16.5	MCCFB1206TFF/15
SMD Fuse, 1206, Fast Blow, 20A	47.17	MCCFB1206TFF/20
SMD Fuse, 1206, Fast Blow, 250mA	0.0004	MCCFB1206TFF/250
SMD Fuse, 1206, Fast Blow, 375mA	0.0008	MCCFB1206TFF/375
SMD Fuse, 1206, Fast Blow, 500mA	0.0022	MCCFB1206TFF/500
SMD Fuse, 1206, Fast Blow, 750mA	0.0057	MCCFB1206TFF/750
SMD Fuse, 1206, Slow Blow, 1A	0.17	MCCFB1206TTT/1
SMD Fuse, 1206, Slow Blow, 1.5A	0.41	MCCFB1206TTT/1.5
SMD Fuse, 1206, Slow Blow, 2.5A	1.5	MCCFB1206TTT/2.5
SMD Fuse, 1206, Slow Blow, 3A	2.5	MCCFB1206TTT/3
SMD Fuse, 1206, Slow Blow, 4A	4	MCCFB1206TTT/4
SMD Fuse, 1206, Slow Blow, 5A	12	MCCFB1206TTT/5
SMD Fuse, 1206, Slow Blow, 6A	16	MCCFB1206TTT/6
SMD Fuse, 1206, Slow Blow, 8A	11.5	MCCFB1206TTT/8
SMD Fuse, 1206, Slow Blow, 10A	-	MCCFB1206TTT/10
SMD Fuse, 1206, Slow Blow, 500mA	0.1	MCCFB1206TTT/500

Important Notice : This data sheet and its contents (the "Information") belong to the members of the AVNET group of companies (the "Group") or are licensed to it. No licence is granted for the use of it other than for information purposes in connection with the products to which it relates. No licence of any intellectual property rights is granted. The Information is subject to change without notice and replaces all data sheets previously supplied. The Information supplied is believed to be accurate but the Group assumes no responsibility for its accuracy or completeness, any error in or omission from it or for any use made of it. Users of this data sheet should check for themselves the Information and the suitability of the products for their purpose and not make any assumptions based on information included or omitted. Liability for loss or damage resulting from any reliance on the Information or use of it (including liability resulting from negligence or where the Group was aware of the possibility of such loss or damage arising) is excluded. This will not operate to limit or restrict the Group's liability for death or personal injury resulting from its negligence. Multicomp Pro is the registered trademark of Premier Farnell Limited 2019.

Newark.com/multicomp-pro
Farnell.com/multicomp-pro
Element14.com/multicomp-pro

multicomp^{PRO}