

FEATURES

- Space Saving
- Weather ability
- Excellent resistance to vibrations

RS PRO FIXED BRACKET TUBE

RS Stock No.: 2312526



RS PROfessionally Approved Products bring to you professional quality parts across all product categories. Our product range has been tested by engineers and provides a comparable quality to the leading brands without paying a premium price.

Product Description

The RS PRO fixed bracket tube has quick fitting ability. Requires 10 x 6mm tube position. It is compatible with Compressed air / Water / Hydraulic Oil / Water Glycol / Diesel Fuel / Petrol. Ability to Quick tube fitting by simple pressure. RoHS and REACH compliant.

General Specifications

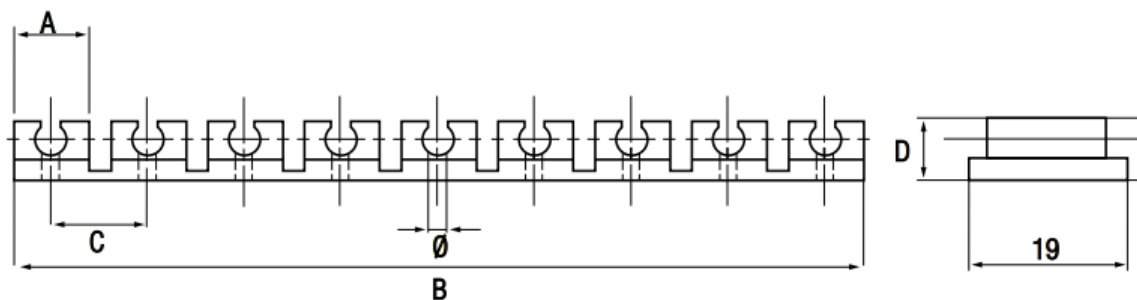
| | |
|---------------------|---|
| Product Type | Fixed Bracket Tube |
| For Use With | Bracket |
| Applications | Quick fitting, Space Saving, Weather ability, Excellent resistance to vibrations, Quick tube fitting by simple pressure |

Mechanical Specifications

| | |
|----------------------|----------|
| Tube Position | 10 x 6mm |
| N° Positions | 10 |
| Diameter | 2.8mm |
| Length | 114mm |

Operation Environment Specifications

| | |
|--------------------------|--------------|
| Temperature Range | 0°C to +40°C |
|--------------------------|--------------|



| Tube Position | Pack. |
|---------------|-------|
| 10 x 6 mm | 10 |