



Datasheet

RS PRO Two-Part Enclosures For Wall Mounting

Stock number: 2006691

EN



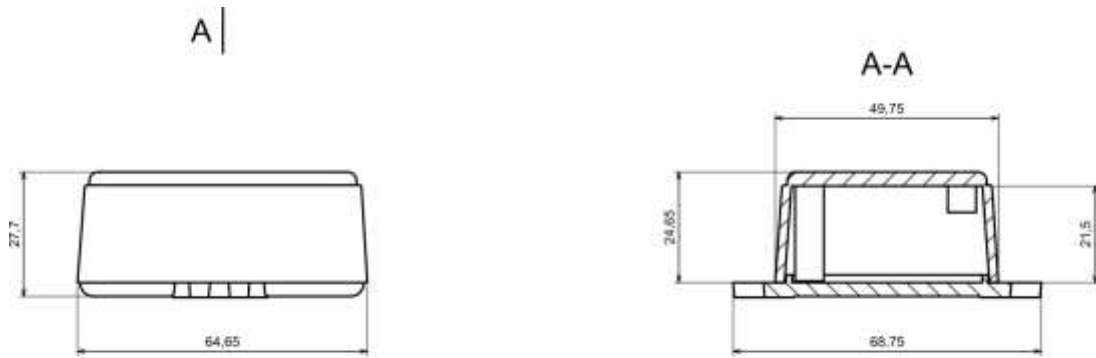
Product Details

Two-part enclosure is made of light gray ABS. The enclosure provides IP53 it is ideal for applications that doesn't require hermetic seal, it can be mounted on walls and other surfaces using mounting ears.

Features and Benefits

- Made of ABS
- Available in light gray color
- Protection against liquids and solid objects: IP53 rating
- Lugs for wall mounting

rspro.com

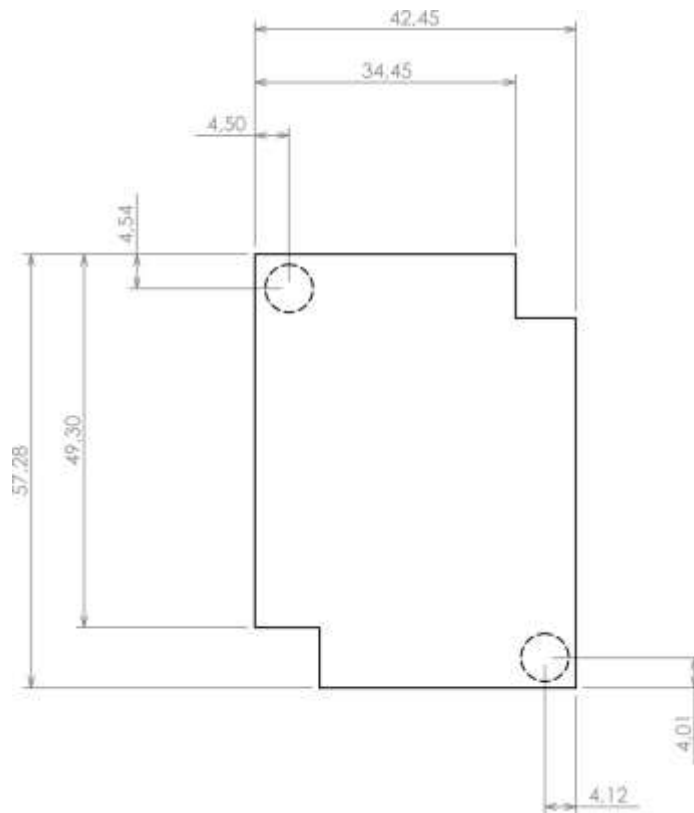


A |

Category	Enclosures For Wall Mounting
Type	Full with lug (U)
Material	ABS
Variant	Without gasket
Height	28.0 mm
Width	49.0 mm
Length	66.0 mm
Color	Light gray
Protection level	IP53
Standards Met	RoHS Compliant
Accessories	Screw 3/13: 2.0 pcs
Certificate number	CE/032/18



Max PCB size



Dashed line shows outline of the mounting boss under PCB board
Recommended mounting holes diameter $\varnothing 3,5\text{mm}$