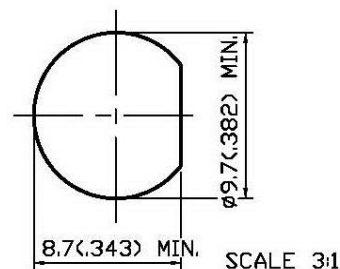
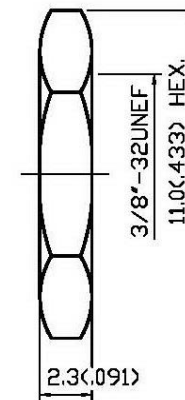
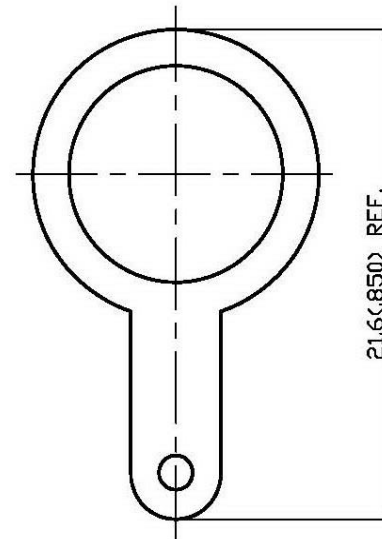
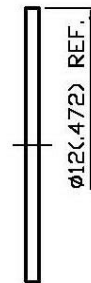
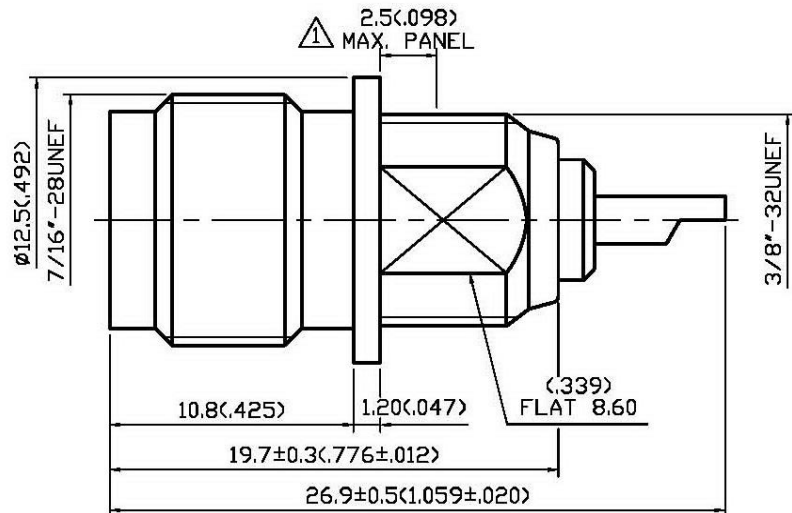


NO	DESCRIPTION	DATE
⚠	WORKING VOLTAGE → VOLTAGE RATING DEL PROOF VOLTAGE ADD VSWR 2.5 MAX. PANEL	07.30.14'



MOUNTING HOLE

1.0 ELECTRICAL

- 1.1 FREQUENCY RANGE: DC-11 GHz
- 1.2 NOMINAL IMPEDANCE: 50 OHMS
- 1.3 VOLTAGE RATING: 500 VOLTS MAX. ⚠
- 1.4 VSWR: 1.3 MAX. @1 GHz ⚠

2.0 MATERIALS

- 2.1 BODIES: BRASS PER JIS-C3804
- 2.2 CENTER CONTACT: BRASS PER JIS-C3804
- 2.3 INSULATION: TEFLON PER ASTM D1457 AND ASTM D1710

3.0 FINISHES AND OTHERS

3.1 SEE BELOW TABLE FOR DETAILS.

4.0 ENVIRONMENTAL

4.1 OPERATING TEMPERATURE RANGE: -65° C TO +165° C

NO	DESCRIPTION	MATERIAL	Q'TY	FINISH
7	GROUNDING TAB	BRASS	1	NICKEL
6	NUT	BRASS	1	NICKEL
5	WASHER	BRASS	1	NICKEL
4	INSULATION	TEFLON	1	NONE
3	CENTER CONTACT	BRASS	1	GOLD
2	BODY	BRASS	1	NICKEL 100μ" MIN.
1	INSULATION	TEFLON	1	NONE



APPROVED by _____ DATE: _____

DESCRIPTION		TNC STRAIGHT BULKHEAD JACK RECEPTACLE							
製圖	DRAWN	TOLERANCE		品名	15-29-1 T.G.N	日期	DATE	版次	REV.
	Yoko	.X	±0.2	TITLE	\ROHS COMPLIANT <50Ω	09.10.92'		B-1	
檢圖	CHECK	.XX	±0.1	單位	UNIT	DWG.NO. 15-0113			
	Arc	.XXX	±0.05	mm(in)					
認定	APPROVAL	ANGLE	±5°	比例	SCALE				
	Angela			4:1					