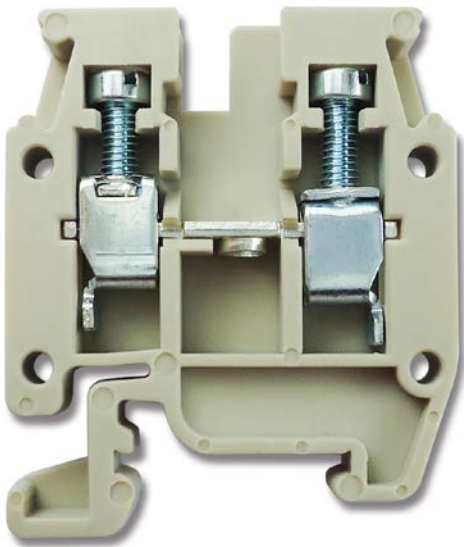


Product Datasheet

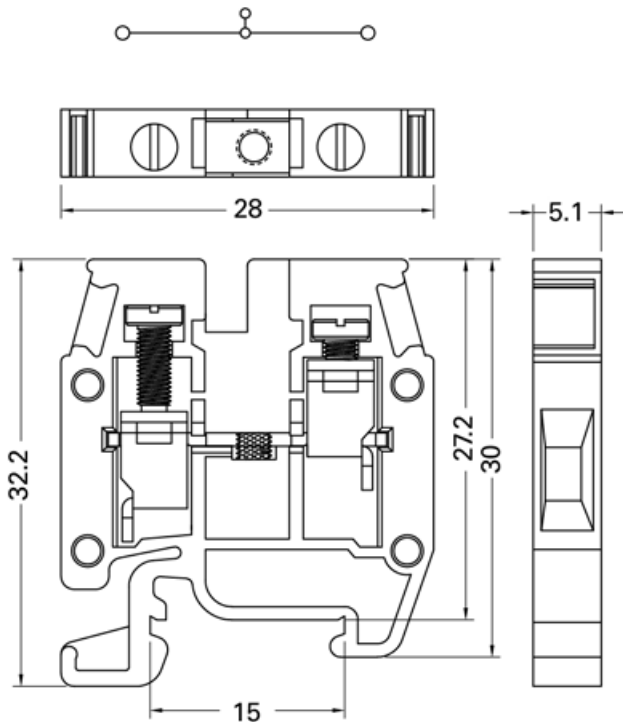
Din Rail micro Terminal Blocks

Screw Clamp micro Terminal Blocks, 20A, 300V, 22-12 AWG, 0.5-2.5 sq.mm

878-7493






Dimensions in mm





ENGLISH

Product Specifications:

Specifications	2.5mm ²
Technical Date	Rated voltage / Rated current / Wire size
UL	300V / 20A / AWG 22-12
CSA	300V / 20A / AWG 22-12
IEC	500V / 24A / 0.5-2.5mm ²
Insulating impulse voltage withstand/pollution degree	6KV / 3
Torque (in -lbs)	7
Clamping Screw (M)	M2.6
Insulation stripping length (mm)	6~8 mm
Net weight per piece	4.2g
Material / Available Color (Standard Color: Beige)	 Red Orange Beige Blue Grey White Black
Rail Dimensions	T / W / H (mm)
For TS15x5.5 	5.1 x 28 x 33
Accessories	Cat. No.
Marking Tags 	8787590