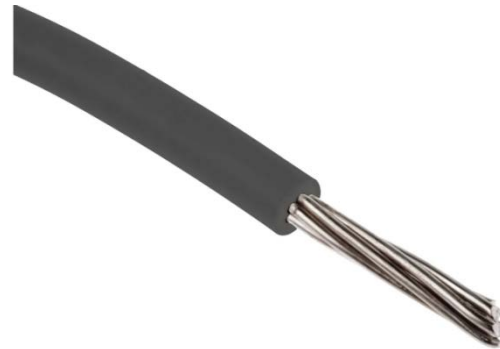


## FEATURES

- Stranded conductors protecting the wires from corrosion and increasing efficiency in hot and humid environments
- PVC insulation
- Easy to handle, strip and terminate
- UL Style 1569
- Flammability Test: VW-1
- Rated Voltage: 300V
- Rated Temperature: 105°C
- Size(AWG): 16

# RS PRO UL1569 Grey, 1.32 mm<sup>2</sup> Hook Up Wire, 305m

RS Stock No.: 208-1101





RS Professionally Approved Products bring to you professional quality parts across all product categories. Our product range has been tested by engineers and provides a comparable quality to the leading brands without paying a premium price.

## Product Description

*Hook up wire can be used for a broad range of applications, whether that be in a control cabinet, high-temperature oven, or in a specialised machine tool.*

## General Specifications

<b>Type</b>	Equipment Wire/ hook-up wire
<b>Cores Number</b>	1C
<b>Conductor Material</b>	Tinned Copper
<b>Cross Sectional Area</b>	1.32mm <sup>2</sup>
<b>Conductor Size of Strands</b>	0.25 ± 0.008mm
<b>Conductor Number of Strands</b>	26
<b>Conductor Strand diameter (mm)</b>	1.50mm
<b>American Wire Gauge</b>	16
<b>Insulation Material</b>	PVC
<b>Insulation Colour</b>	Grey
<b>Insulation Wall Thickness</b>	0.40mm
<b>Insulation Min Thickness</b>	0.33mm
<b>Insulation Diameter</b>	2.34 ± 0.10mm
<b>Wire Style</b>	UL1569
<b>Fire Behaviour</b>	Flammability Test: VW-1
<b>Cable Marking</b>	E254881  AWM STYLE 1569 16AWG 105°C 300V VW-1 C  AWM I A 105°C 300V FT1 -LF- ELETECK

## Electrical Specifications

<b>Voltage Rating</b>	300V
<b>Conductor Resistance</b>	14.6Max Ohms/1000m @ 20degC
<b>Spark Test</b>	1500 VAC RMS
<b>Insulation DC Resistance(Min)</b>	200 M $\Omega$ *KM @20degC
<b>Minimum Bend Radius</b>	15 x overall diameter

## Operation Environment Specifications

<b>Minimum Operating Temperature</b>	-40°C
<b>Maximum Operating Temperature</b>	105°C
<b>Operating Temperature Range</b>	-40°C to 105°C

## Approvals

<b>Compliance/Certifications</b>	UL 11028
<b>Standards Met</b>	RoHS Compliant
<b>Declarations</b>	REACH