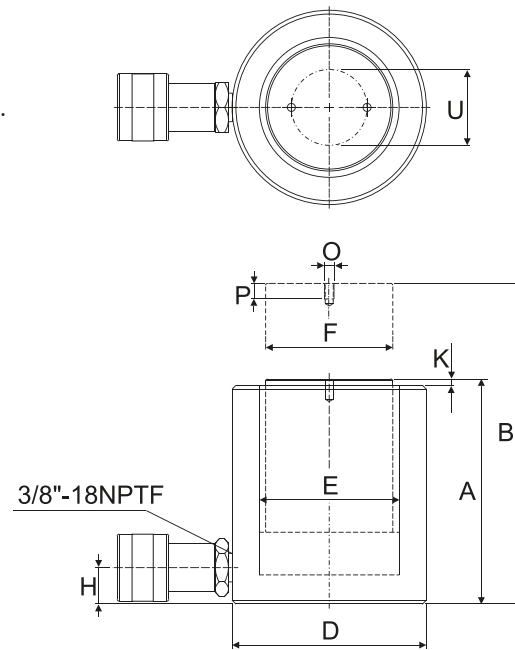


DCS SERIES

Single-Acting, Low Height Cylinders

- Low profile design meant for usage within confined spaces.
- Grooved piston end with threaded holes for installation of tilt saddles.
- Hard chrome plated piston rod and inner cylinder barrel resists wear and corrosion.
- Increased durability with solid steel cylinder body.
- Maximum sized springs speed piston return and increase spring life.
- Stop ring for piston blow-out protection.
- Powder-coated nitride finishing for increased corrosion resistance and antirust features.
- 3/8" NPTF female coupler and dust cap included for all models.



DCS-201



DCS-502

Handle Type

(S) - Standard equipped
(C) - Customer order



Weldable

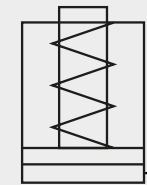


Eyebolt

Removable
strap handles

Thread

Handle type	Model Number	Cylinder Capacity	Stroke	Cylinder Effective Area	Oil Cap.	Collapsed Height	Extended Height	Outside Diameter
(S)		ton (kN)	(mm)	(cm ²)	(cm ³)	A (mm)	B (mm)	D (mm)
	DCS-101	10 (101)	38	14.5	55	88	126	69
	DCS-201	20 (201)	45	28.7	129	98	143	92
	DCS-302	30 (295)	62	42.1	261	117	179	101
W	DCS-502	45 (435)	60	62.1	373	122	182	124
W	DCS-1002	90 (887)	57	126.7	722	141	198	165



Single-Acting

Low Height Cylinder
Spring return

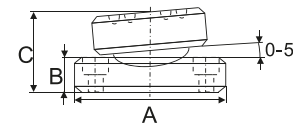
Capacity	10-90 ton
Stroke	38-62 mm
Maximum Operating Pressure	700 bar



Use in combination with our hydraulic pumps and accessories

Basic system set-up include cylinder, male/female coupler, hose, pressure gauge, gauge accessories and pump.

Please contact DURAJACK office nearest to you for advice and technical assistance in the layout of your ideal.



Optional Saddle Dimensions (mm)

Cylinder Model/Cap.	Model Number	A	B	*C
ton (kN)				
DCS-101	DXKCATRCS-10	35	11	21
DCS-20, 302, 502	DXKCATRCS-20	50	15	29
DCS-1002	DXKCATRCS-100	71	17	35

*C dimension equals saddle protrusion from plunger. Mounting screws are included.



DCS-1002



Saddle

All DCS series cylinders have plunger mounting holes for installation of tilt saddles.

Cylinder Bore Diameter	Plunger Diameter	Base to Adv. Port	Plunger Protrusion from Base	Thread	Thread Depth	Bolt Circle	Weight	Model Number
E (mm)	F (mm)	H (mm)	K (mm)	O (mm)	P (mm)	U (mm)	(kg)	
42.9	38.1	17	5	M4	8	26	4.1	DCS-101
60.5	50.8	17	3	M5	8	39	5.0	DCS-201
73.2	66.5	19	3	M5	8	39	6.8	DCS-302
88.9	69.8	23	2	M5	8	39	10.9	DCS-502
127.0	92.2	31	1	M8	10	55	22.7	DCS-1002