

FEATURES

- Drawn from Stainless Steel
- Matte shot blasted finish
- Specially designed for the food processing industry
- Available with threaded blind hole or threaded through hole

RS PRO Silver Multiple Lobes Clamping Knob, M8

RS Stock No.: 478-939



RS Professionally Approved Products bring to you professional quality parts across all product categories. Our product range has been tested by engineers and provides a comparable quality to the leading brands without paying a premium price.

Product Description

Knobs are used in a wide variety of applications in our day-to-day lives and perform many functions, from being used as fixed handles to being used to tighten, loosen, adjust, clamp and push other components or pieces of equipment. They are used in various applications, from industrial and construction machinery to audio and visual equipment.

Female knobs: M6 (RS [478630](#)), M8 (RS [478939](#)), M8 (RS [478999](#)), M10 (RS [478967](#)), M10 (RS [478977](#)), M12 (RS [478973](#)).

General Specifications

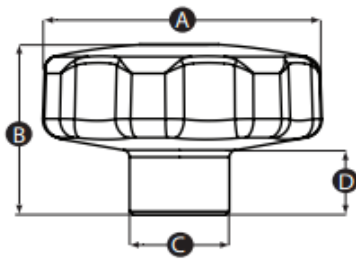
Thread	M8
Knob Shape	Multiple Lobes
Mounting Type	Threaded Hole
Body Material	Stainless Steel
Colour	Silver
Finish	Matte
Application	Tripods, Machinery, Audio equipment, Medical furniture and equipment, Food preparation machinery and equipment

Mechanical Specifications

Thread Diameter	8mm
Thread Length	20mm
Knob Diameter	40mm
Hole Diameter	14mm
Hole Length	24mm

Approvals

Compliance/Certifications	EN61340
----------------------------------	---------



Part No.	A	B	C	D	Thread size
478630	40	24	14	8	M6
478939	40	24	14	8	M8
478999	50	31	18	10	M8
478967	50	31	18	10	M10
478977	60	39	20	14	M10
478973	60	39	20	14	M12