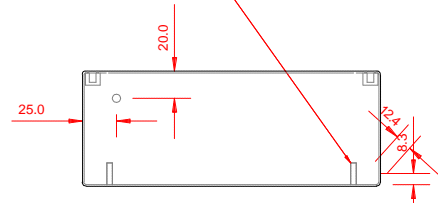
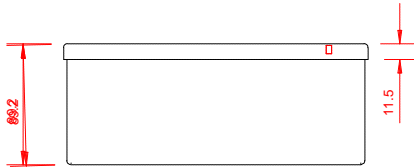


ASSEMBLY INCLUDES LID GASKET

4 OFF M5 BLIND TANK BUSH

4 OFF M6 X 16 C.D. STUDS



FULL ASSEMBLY DETAILS



ELECTRIX INTERNATIONAL LTD

DATE 03.03.04

DRAWN

JA

MATERIAL 1.4404 ST/ST

TOLERANCES

+/- 0.5mm
ON HOLE CTRS

TITLE

220 X 220 X 85 SATIN 316 ENCLOSURE

AUTH

CHECKED

MSE

FINISH SATIN

THICKNESS 1.2

+/- 3.5
ON FOLDED PARTS