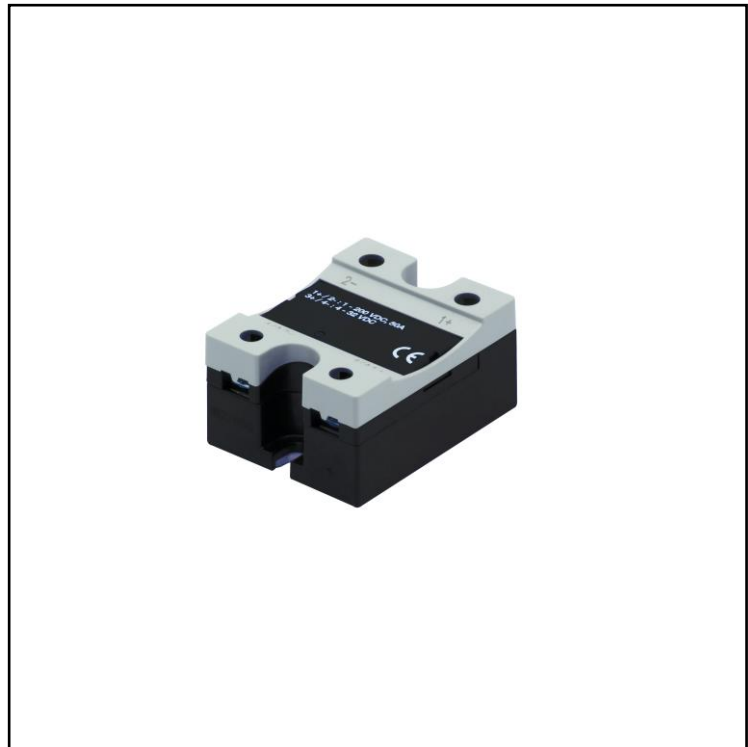


## FEATURES

- DC Panel Mount SSR
- High voltage 200VDC 20A
- 4.5 - 32VDC Control Voltage, with LED indication
- High switching frequency 1000Hz
- Clip on IP20 Terminal Cover
- Self-lifting terminals
- Isolation input / output 3750 Vrms
- Operational voltage 1 VDC -60 VDC
- Leakage current @ rated voltage 0.1 mADC
- Pickup Voltage 4 VDC
- Dropout voltage 1.2 VDC
- Response Pickup <100 Us
- Operating Temp -20°C to 80°C (-4°F - 176°F)
- 

## RS PRO DC switching 200 Volt 20A panel mount SSR

RS Stock No.: 2303311



## Solid State Relays

RS Professionally Approved Products bring to you professional quality parts across all product categories. Our product range has been tested by engineers and provides a comparable quality to the leading brands without paying a premium price.

### Product Description

DC switching solid state relay with 3750Vrms isolation between connection and disconnection of battery source. High frequency switching capability up to 1000Hz.

- Applications: - Where there is a requirement of a high number switching cycles is required.
- Applications DC Heaters, Solenoid Valves Test Equipment, and disconnection of battery sources.

### General Specifications

Panel mount SSR 200VDC 20A Low power output Mosfet

### Mechanical Specifications

58.2mm \* 44.8,\* 29.5mm

### Electrical Specifications

200VDC 20A, Green LED when output on.

### Protection Category

IP20 when clip on cover is attached (included)

### Additional Information

<b>EAN</b>	6937945300626
<b>Custom Tariff Number</b>	85362010

**Classification****Approvals**

<b>Declarations</b>	MFR Declaration of Conformity LVD EN/IEC 60947-1 EMCD EN/IEC 61000-6-4, EN/IEC 61000-6-2, UR UL508, E80573, NRNT2, cUR, CSA 22.2 No14-18, e80573, NRNT8 CSA CSA22.2 No 14-18, 204075
<b>Standards Met</b>	CE CRUUS CSA EAC

Connection Diagrams / Assembly Diagrams / Illustrations / Accessories