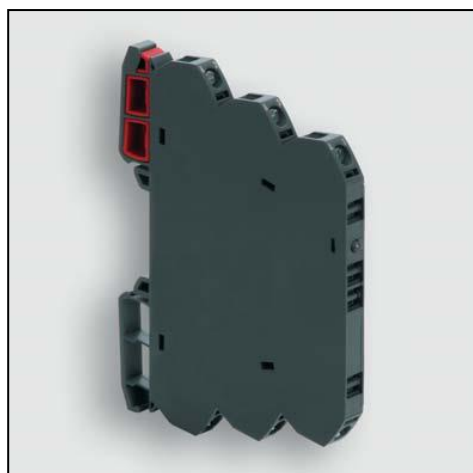


Datasheet

LCIS Relay Module

RS Stock number 888-6855



Identification	Type	LCIS-SR-DC/AC-2L-200220-S
	Part-No.	8886855

Input

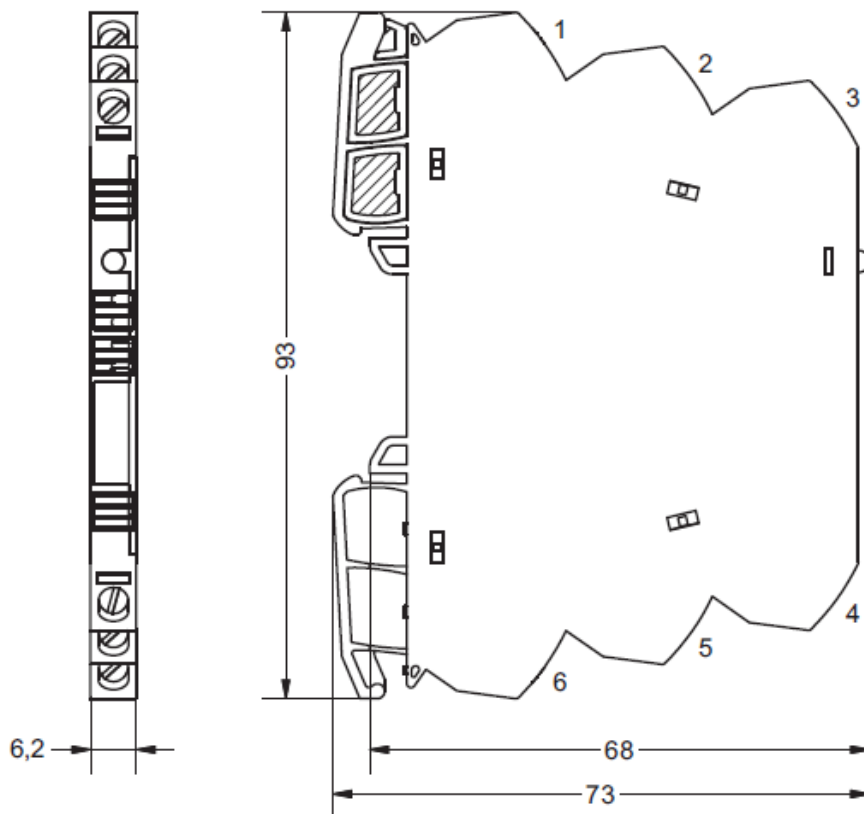
Input voltage range	11.0 V – 30.0 V
Rated current	9.0 mA
Interrupting voltage	<9 V
Protection device	Varistor
Status Indication	LED green

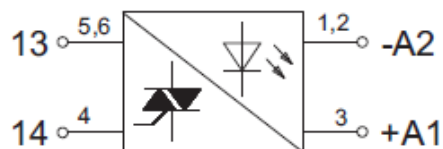
Load Side

Switching element	Triac, NO contact (zero-voltage switching)
Min. switching voltage	AC 20 V
Max. switching voltage	AC 264 V
Min. switching current	5 mA
Max. switching current	2 A
Leakage current	1 mA
Switch-on delay	< 10 ms
Switch-off delay	< 10 ms
Switching frequency	10 Hz
Protection device output	Varistor

General

Housing material	PA 6.6 (UL 94 V-0)
Protection class	IP 20
Field installation	rail TS 35 (EN 60175)
Insulation voltage input/output	4.0 kV _{eff}
Clearance/creep. dist. (control/load side)	>5.5 mm
Safe isolation	yes
Operation temperature range	-25 °C – 60 °C
Storage temperature range	-40 °C – 85 °C
Dimensions (w x h x d)	6.2 x 93.0 x 73.0 mm
Weight (kg/piece)	0.030
Approvals	UL, CSA, GL in preparation
Termination	Screw terminal: solid 0.25 – 2.5 mm ² / AWG 20 – 14 fine stranded with ferrule 0.25 – 1.5 mm ² / AWG 20 – 16 Stripping length: 6 mm Screw driver: 3.5 x 0.5 mm

Dimensions


PIN assignment

Accessories

Accessories	Color	Article number	Type	PU
Tag holder (quantity 200)	white (5x5 mm)	8886956	LCIS-ZB-BZS-white- 1 00	1
Tag holder (quantity 120)	white (12x6 mm)	8886950	LCOS-ZB-BZS-whi- 1 te-12/6	1