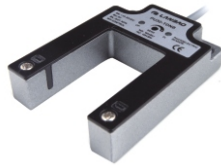


RS Pro Through Beam U-Shaped Photoelectric Sensor

Item Code	PU30	PU30
Sensing mode	Through beam	Through beam
Sensing distance	30mm (Adjustable)	30mm (Non-adjustable)



Output				
	NPN NO/NC	903-3927		903-3939
Output				
	PNP NO/NC	903-3936		903-3933

Technical Parameter

Supply voltage	10...30VDC	10...30VDC
Light source	Infrared LED(Modulated)	Infrared LED(Modulated)
Sensing object	Opaque Objects with $\Phi > 2\text{mm}$	Opaque Objects with $\Phi > 2\text{mm}$
Response time	Max,1ms	Max,1ms
Load current	$\leq 200\text{mA}$	$\leq 200\text{mA}$
Residual voltage	$\leq 2.5\text{VDC}$	$\leq 2.5\text{VDC}$
Consumption current	$\leq 15\text{mA}$	$\leq 15\text{mA}$
Protection	Polarity protection / Surge protection / Short-circuit protection	Polarity protection / Surge protection / Short-circuit protection
Output indicator	Yellow LED	Yellow LED
Ambient temperature	-15...55°C	-15...55°C
Withstand voltage	1000V/AC 50/60Hz 60s	1000V/AC 50/60Hz 60s
Insulation	$\geq 50\text{M}\Omega(500\text{VDC})$	$\geq 50\text{M}\Omega(500\text{VDC})$
Anti-vibration	1.5mm amplitude at 10 to 50Hz in each of xy and z direction for two hours	1.5mm amplitude at 10 to 50Hz in each of xy and z direction for two hours
Anti-shocking	500m/S(50G)for 3 Times,in each of xy and z direction	500m/S(50G)for 3 Times,in each of xy and z direction
Protection degree	IP60	IP67
Housing material	Aluminum alloy	Aluminum alloy
Connection	2m PVC Cable	2m PVC Cable
Certification	CE UL	CE UL

