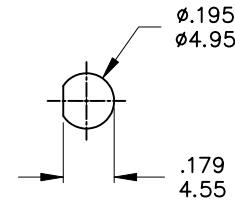


P.C.MOUNTING



PANEL MOUNTING

Model No.	POS.1	POS.2	POS.3
2MD1	ON	NONE	ON
Term. Comm.	2-3,5-6	N/A	2-1,5-4
SCHEMATIC			

SWITCH FUNCTION



SPECIFICATIONS

MECHANICAL LIFE: 30,000 make-and-break cycles.
CONTACT RESISTANCE: 20mΩ max. initial @ 2-4VDC
 100mA for both silver and gold plated contacts.
INSULATION RESISTANCE: 1,000MΩ min.
DIELECTRIC STRENGTH: 1,000 V RMS@sea level.
OPERATING TEMPERATURE: -30°C to 85°C.

MATERIALS

CASE - Dially phthalate(DAP)(UL94V-0)
ACTUATOR - Brass,chrome plated
BUSHING - Brass,nickel plated
HOUSING - Stainless Steel
SWITCH SUPPORT - Brass,tin plated.
TERMINALS/CONTACT - Brass, with Silver or gold plated.
RoHS: 2002/95/EC

	CONTACT MATERIAL	TERMINAL PLATING	RATINGS
Q	Silver	Q = Silver	3 Amps @120 VAC or 28 VDC 1 Amps @250VAC
S		S = Silver,pure-tin	
C	Gold over Silver	C = Gold over silver	0.4 Volt-Amps(VA) max. @20V max. (AC or DC)
K		K = Gold over silver,pure-tin	
R	Gold	R = Gold	
G		G = Gold,pure-tin	

	符號	原尺寸	修改後尺寸	變更日期
1	(A)			
2	(B)			
3	(C)			
4	(D)			
5	(E)			

SCALE (比例): 3:2
TOLERANCE (公差):
 0.00 mm ± 0.25mm
 0.0 mm ± 0.40mm
ANGULAR: ± 5°
FILE NAME: 2MDP0361

TITLE 圖名	Sub - Miniature Toggle Switches <th>SIZE 圖紙</th> <td>A4</td>			SIZE 圖紙	A4
DWG NO. 圖號	2MD1T1B4VS2QES <th>UNIT 單位</th> <td>inch mm</td>			UNIT 單位	inch mm
REV. 版本	A <th>DATE 日期</th> <td>MAY - 19 - 2010</td> <th>SHEET 張數</th> <td>1 of 1</td>	DATE 日期	MAY - 19 - 2010	SHEET 張數	1 of 1
CHECKED BY 審核	RICHARD		DRAWN BY 製圖	IRENE	