



Application Guide
Double Pole Switch

CAT. NO.

KB31D20NE

KB32D20NE

KB31D20NE_2

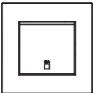
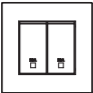
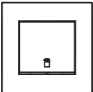
KB31DR45N

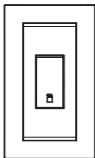
KBT31VDR45N

Vivace

Thank you for choosing **Schneider Electric** Vivace Double Pole Switches. To ensure proper application of our products, please read through the following information before installation and use.

This application guide applies to the following Vivace products.

	Cat No.	Description
	KB31D20NE KB31D20NE_2	20A 250V 1 Gang Double Pole Switch With Neon and Earth 20A 250V 1 Gang 2 Way Double Pole Switch With Neon and Earth
	KB32D20NE	20A 250V 2 Gang Double Pole Switch With Neon and Earth
	KB31DR45N	45A 250V Double Pole Switch with Neon



Cat No.	Description
KBT31VDR45N	45A 250V Twin Gang Vertical Double Pole Switch with Neon

Remarks: Surround is not included for Reference No. with Suffix "GA"

SPECIFICATIONS

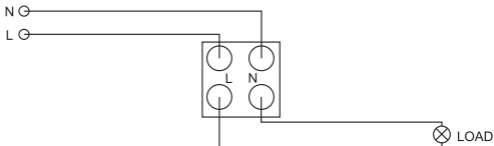
Voltage	: 250VAC
Ampere	: 20A (for KB31D20NE, KB32D20NE, KB31D20NE_2) 45A (for KB31DR45N, KBT31VDR45N)
Dimension	: 86mm x 86mm (except KBT31VDR45N) 146mm x 86mm (for KBT31VDR45N)
Mounting Centre	: 60.3mm (except KBT31VDR45N) 120.6mm (for KBT31VDR45N)
Compliance	: IEC60669-1, MS IEC 60669-1, SS227 (for KB31D20NE, KB32D20NE, KB31D20NE_2) MS IEC60669-1, SS227 (for KB31DR45N, KBT31VDR45N)

IMPORTANT NOTE

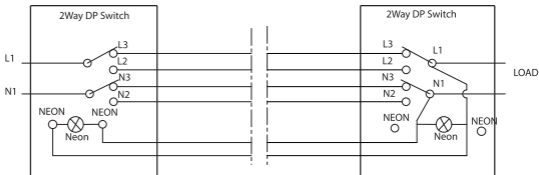
Please check your local wiring regulations before installation.

WIRING DIAGRAM

1 way Double Pole Switch

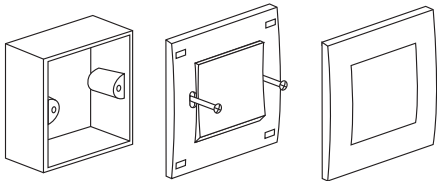


2 way Double Pole Switch



MOUNTING INSTRUCTION

Please refer to the following diagram for proper installation.



Remarks: For surround mounting, align the clip locks on the faceplate and press firm on the surround. Complete engagement of the clip locks is indicated by a clear "click" sound.

