

SC 30 GLAZE COAT

SOLVENT BASED CLEAR POLYMER CONCRETE SEALER AND GLAZE COATING

USES

- Sealing of cracks by pouring.
- Deep sealing of porous, chalky or powdery cement surfaces before painting.
- It resists blistering in stagnant water on the rooftop and the alkalinity of the cement.
- Sealing and glazing of roof tiles and outdoor floor slates to prevent black mildew growth and staining.
- Sealing of fine gap of aluminium window frame.
- Car Park coating and culvert coating to prevent staining.
- Can be coated over epoxy surfaces.
- Gloss coating over pebble floor.

APPLICATION METHODS

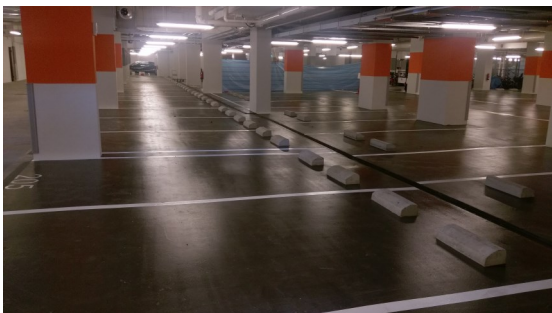
- Surface to be coated has to be clean and dry for maximum absorption. It is better to seal the surface with **W4 WATER REPELLENT** for better paint bonding and durability.
- **SC 30** can be diluted with Thinner, (Toluene: slow drying or Xylene: fast drying).
- **SC 30** is to be used undiluted for pouring into concrete cracks for deep sealing and penetration.

CAUTION

- Not suitable for coating over brick wall. May result in blistering and white patches due to trapped moisture having no escape passage.
- **W 4 WATER REPELLENT** is vapour permeable and is most suitable for the job.

TECHNICAL DATA

- Physical Form: Clear solution.
- Solvent used: Thinner. Toluene for slower drying, Xylene for fast drying.
- Elongation: 100 %



Skyvue Bishan Nov 2017



Marine Parade Community Center (June 2013)

SC 30 GLAZE COAT

SOLVENT BASED CLEAR POLYMER CONCRETE SEALER AND GLAZE COATING

- UV resistance: Excellent, Non-yellowing.
- Weathering property: Excellent.
- Water seeping test: Excellent. Cup test. 5% water seeping through over 24 hours
- Stagnant water test: Excellent. No change in physical property.
- Drying time: Surface dry - 15 minutes at 25 °C.
Fully cured - 8 hours.
- Coverage: Concrete surface - 0.4 kg / m² (2 coats).
Tile surface - 0.2 kg / m² (1 coat).



Packing 1 kg-tin, 5 kg-tin, 20 kg-tin

SAFETY PRECAUTIONS:

- **Flammable solvent product. Use in ventilated area and avoid naked flame.**
- **Allowed spent paint in the container to cure fully before disposing at the dumping ground or incinerator, avoid polluting the waterway.**
- **Avoid direct contact with the eyes and skin.**
- **Always wear protective clothing, gloves and safety glasses.**
- **The coated surface will be very SLIPPERY.**

Above are our recommendations based on in house testing and experience. If in doubt, please do a preliminary testing before use.

Disclaimer: The information provided in this brochure is ensured to be as accurate as possible at the time of inclusion, however there may be inadvertent and occasional errors which may have slipped from our notice. Warrior Pte Ltd does not guarantee and make no representations or warranties of any kind about the information, advice and opinions provided and reserves the right to make changes and corrections at any time, without prior notice to any parties. Warrior Pte Ltd accepts no liability for any inaccuracies or omissions in its brochure and any decisions made based on information and opinions contained in the brochure is the sole responsibility of the user.

SC 30 GLAZE COAT

SOLVENT BASED CLEAR POLYMER CONCRETE SEALER AND GLAZE COATING

COLOUR CHART



F 1501 TURF GREEN
(*370C)



F 1602 FRENCH CLAY
(*7413C)



F 1701 BRICK RED
(*181C)



F 1503 MISTY GREEN
(*7489C)



F 1604 GERMAN CLAY
(*7522C)



F 1702 CHILLI RED
(*187C)



F 1005 MISTY GREY
(*COOL GRAY 8C)



F1705 BROWN
(*4705C)



F 1704 COTTAGE RED
(*7427C)



F 1006 ZINC GREY
(*COOL GRAY 9C)



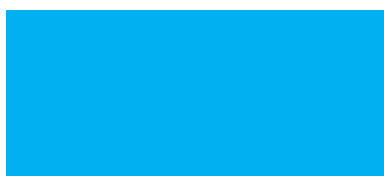
F 1201 NAVY BLUE
(*7462 C)



F 1707 CHOCOLATE
(*4975C)



F 1007 LEAD GREY
(*COOL GRAY 10C)



F 1202 SKY BLUE
(*637 C)



F 1803 LEMON YELLOW