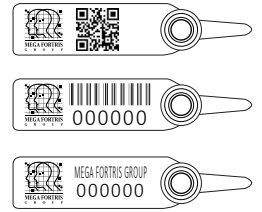
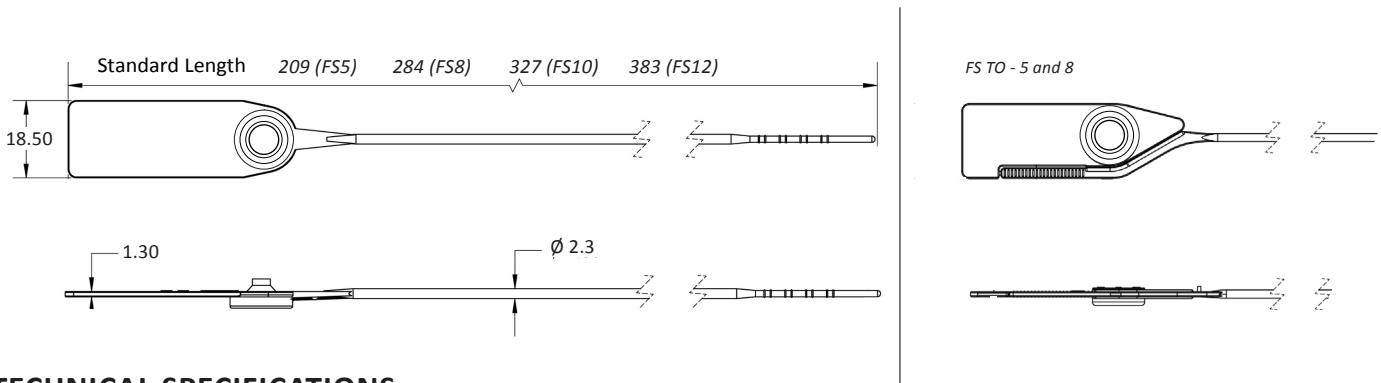


LASER MARKING OPTION



- 1** The Fast Seal is moulded with Polypropylene (PP) or high-impact Nylon (NY) material with encapsulated metal lock for greater security and clear tamper-evidence.
- 2** One-way locking mechanism is embedded for fast and easy application.
- 3** Irreversible identifiers such as name, logo, barcode, serial number and QR code are laser-marked on the flap.
- 4** Biodegradable additives for plastic material are available.
- 5** Different strap lengths are available to cater to different applications.
- 6** Tear-off (TO) variation available in 5" and 8" for easy removal.



TECHNICAL SPECIFICATIONS

PRODUCT - FAST SEAL (FS)

| Code | Material | Locking Length | Locking Size | Tensile Strength | Marking Area | Max Marking Digits |
|-------------|--|-------------------|----------------------|--|------------------------------|--|
| FS5 | Plastic : Polypropylene (PP) <i>Temperature Range:</i> -5°C to 80°C High-impact Nylon (NY) <i>Temperature Range:</i> -5°C to 80°C | 128 mm (5 in) | Ø 2.3 mm (0.1 in) | PP: ≥15 kgf (≥33.1 lbf) NY: ≥18 kgf (≥39.7 lbf) | 14 x 34 mm (0.6 x 1.3 in) | Serial no : 13 Barcode : 12 |
| FS8 | | 203 mm (8 in) | | | | |
| FS10 | | 245 mm (10 in) | | | | |
| FS12 | | 301 mm (12 in) | | | | |

PACKAGING

| Carton | Quantity | Dimensions (mm) | Gross Weight (kg) | Volume (m ³) | Standard Pastel / Solid Colours |
|----------------------|----------|--|------------------------------|--------------------------|---|
| FS5 Inner | 1000 | 279 x 225 x 190 (11.0 x 8.9 x 7.5 in) | 2.3 - 2.65 (5.1 - 5.8 lb) | 0.012 (0.4 cu.ft.) | Polypropylene : Body : WH PSYL PSOR PSRD PSBL PSGN Cap : TRNS WH MILKY (BIO) Nylon : Body : WH B YL G RD Cap : TRNS WH MILKY (BIO) For colour customisations, kindly contact us for further information. |
| FS8 Inner | | 2.68 - 3.01 (5.91 - 6.64 lb) | 0.014 (0.5 cu.ft.) | | |
| FS10 Inner | | 2.61 - 3.17 (5.75 - 6.99 lb) | | | |
| FS12 Inner | | 3.14 - 3.25 (6.92 - 7.17 lb) | | | |