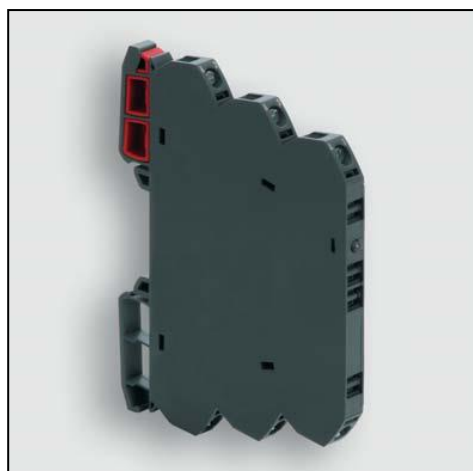


Datasheet

LCIS Relay Module

RS Stock number 888-6899



Identification	Type	LCIS-RGA120UP-PI-1U
	Part-No.	8886899

Input	
Input voltage range	92.0 V – 126.5 V
Nominal voltage	AC/DC 115 V
Rated frequency	50–60 Hz
Rated current	4.0 mA
Interrupting voltage	<2.4 V
Protection device	Bridge rectifier
Max. length of connecting lead	DC 1000 m / AC 500 m
Status Indication	LED green

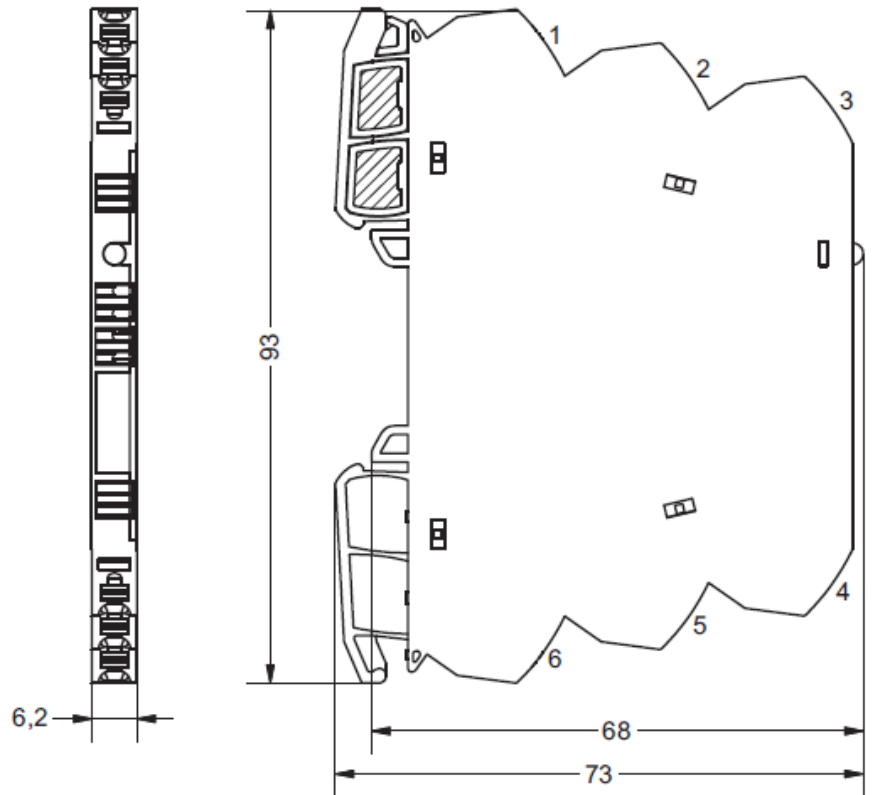
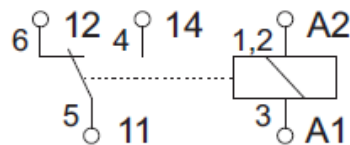
Load Side	
Contact type	1 change over contact
Min. switching voltage	AC/DC 17 V
Max. switching voltage	AC/DC 250 V
Min. switching current	AC/DC 5 mA
Max. switching current	AC/DC 6 A
Switching capacity AC 15	3 A
Switching capacity DC 13	at 24 V: 1 A, at 125 V: 200 mA, at 250 V: 100 mA
Max. switching capacity	1500 VA
Contact material	AgSnO2



Mechanical service life	$> 5 \times 10^7$ operations
Switch-on delay	8 ms
Switch-off delay	13 ms
Clearance/creep. dist. (control/load side)	> 5.5 mm

General

Housing material	PA 6.6 (UL 94 V-0)
Protection class	IP 20
Field installation	rail TS 35 (EN 60175)
Insulation voltage input/output	4.0 kV _{eff}
Safe isolation	yes
Rated insulation voltage (EN 50178)	300 V
Operation temperature range	-25 °C – 60 °C
Storage temperature range	-40 °C – 80 °C
Dimensions (w × h × d)	6.2 × 93.0 × 73.0 mm
Weight (kg/piece)	0.035
Approvals	UL, CSA, GL in preparation
Termination	Push-In: solid 0.25 – 2.5 mm ² / AWG 20 – 14 fine stranded with ferrule 0.25 – 1.5 mm ² / AWG 20 – 16 Stripping length: 8 mm Screw driver: 3.5 x 0.5 mm
Installation position	Optional

Dimensions

PIN assignment

Accessories

Accessories	Color	Article number	Type	PU
Tag holder (quantity 200)	white (5x5 mm)	8886956	LCIS-ZB-BZS-white- 1 00	
Tag holder (quantity 120)	white (12x6 mm)	8886950	LCOS-ZB-BZS-whi- 1 te-12/6	