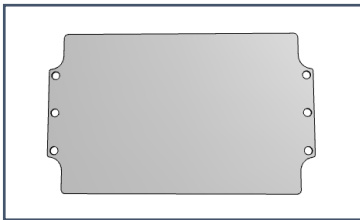


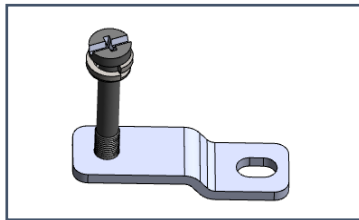


**Every part matters**

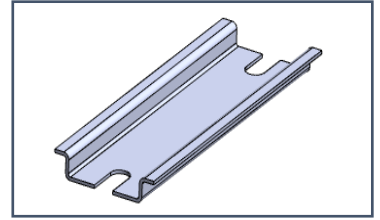
# GRP Junction Box Accessories



Mounting Plate



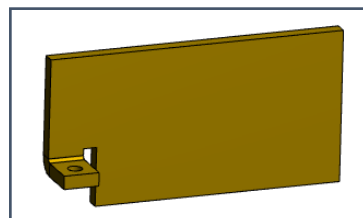
Mounting Bracket



DIN Rail



Earth Stud



Gland Plate

# RS PRO Aluminum Junction Box Accessories Mounting Plates



## Mounting Plate - Steel

Material – Mild Steel

Finish - Zinc plated trivalent Blue Passivation

RoHS Compliant



## Mounting Plate – Bakelite

Material – Bakelite

RoHS Compliant



RS PRO Article Nos (Enclosures)			Enclosure Dimensions External (mm)			Mounting Plate	
GRP BLACK	GRP GREY	GRP ATEX	Length	Width	Height	Steel	Bakelite
9188724	1901856	1444450	80	75	55	2481072	2481088
9188749	9188736	1444451	110	75	55	2481073	2481089
9188758	9188746	1444452	122	120	90	2481090	2481150
1901854	1904276	1901865	80	75	75	2481072	2481088
9188768	9188761	1444453	160	75	55	2481074	2481092
9188783	9188770	1444454	160	75	75	2481074	2481092
9188792	9188780	1444455	160	160	90	2481093	2481151
1901852	1904275	1901866	110	75	75	2481073	2481089
9188803	9188806	1444456	190	75	55	2481075	2481094
1904279	1901850	1901867	190	75	75	2481075	2481094
9188828	9188815	1444457	220	120	90	2481095	-
9188837	9188825	1444458	255	250	120	2481096	-
9188847	9188840	1444459	260	160	90	2481097	-
9188862	9188859	1444460	360	160	90	2481098	-
9188871	9188869	1444461	400	250	120	2481099	-
		1444462	400	405	120	2481100	-
1901848	1904274	1901868	255	250	160	2481096	-
1904280	1901847	1901869	400	250	160	2481099	-
1904281	1901845	1901870	400	405	201	2481100	-
1904282	1901843	1901871	600	250	121	2481111	-
1901858	1904277	1901872	600	250	161	2481111	-

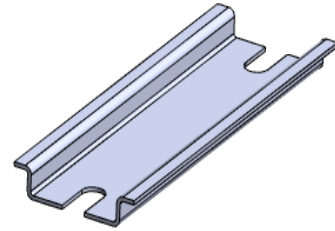
# RS PRO Aluminum Junction Box Accessories

## DIN Rail



### DIN Rail

Material – Mild Steel  
 Finish - Zinc plated trivalent Blue Passivation  
 RoHS Compliant



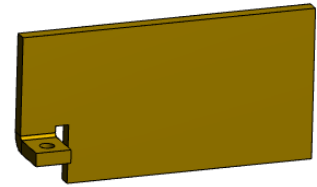
RS PRO Article Nos (Enclosures)			Enclosure Dimensions External (mm)			DIN Rail Length (mm)	DIN RAIL for Terminals	
GRP BLACK	GRP GREY	GRP ATEX	Length	Width	Height		TS15	TS35
9188724	1901856	1444450	80	75	55	63	2481139	-
9188749	9188736	1444451	110	75	55	98	2481140	-
9188758	9188746	1444452	122	120	90	107	-	2481130
1901854	1904276	1901865	80	75	75	63	2481139	-
9188768	9188761	1444453	160	75	55	145	2481141	-
9188783	9188770	1444454	160	75	75	145	2481141	-
9188792	9188780	1444455	160	160	90	144	-	2481128
1901852	1904275	1901866	110	75	75	98	2481140	-
9188803	9188806	1444456	190	75	55	174	2481143	-
1904279	1901850	1901867	190	75	75	174	2481143	-
9188828	9188815	1444457	220	120	90	205	-	2481144
9188837	9188825	1444458	255	250	120	238	-	2481137
9188847	9188840	1444459	260	160	90	245	-	2481145
9188862	9188859	1444460	360	160	90	341	-	2481146
9188871	9188869	1444461	400	250	120	381	-	2481147
		1444462	400	405	120	381	-	2481147
1901848	1904274	1901868	255	250	160	238	-	2481137
1904280	1901847	1901869	400	250	160	381	-	2481147
1904281	1901845	1901870	400	405	201	381	-	2481147
1904282	1901843	1901871	600	250	121	581	-	2481148
1901858	1904277	1901872	600	250	161	581	-	2481148

# RS PRO Aluminum Junction Box Accessories Gland Plate & External Mounting Bracket



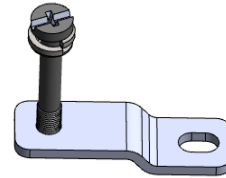
## Gland Plate/Continuity Plate

Material – Copper Alloy/Brass  
RoHS Compliant



## External Mounting Bracket

Material – SS304  
RoHS Compliant



RS PRO Article Nos (Enclosures)			Enclosure Dimensions External (mm)			Gland Plate	External Mounting Bracket
GRP BLACK	GRP GREY	GRP ATEX	Length	Width	Height		
9188724	1901856	1444450	80	75	55	2481081	2481121
9188749	9188736	1444451	110	75	55	2481082	2481121
9188758	9188746	1444452	122	120	90	2481083	2481121
1901854	1904276	1901865	80	75	75	2481107	2481121
9188768	9188761	1444453	160	75	55	2481084	2481121
9188783	9188770	1444454	160	75	75	2481086	2481121
9188792	9188780	1444455	160	160	90	2481113	2481121
1901852	1904275	1901866	110	75	75	2481109	2481121
9188803	9188806	1444456	190	75	55	2481087	2481121
1904279	1901850	1901867	190	75	75	2481110	2481121
9188828	9188815	1444457	220	120	90	2481112	2481121
9188837	9188825	1444458	255	250	120	2481117	2481121
9188847	9188840	1444459	260	160	90	2481115	2481121
9188862	9188859	1444460	360	160	90	2481116	2481121
9188871	9188869	1444461	400	250	120	2481118	2481121
		1444462	400	405	120	2481118	2481121
1901848	1904274	1901868	255	250	160	2481117	2481121
1904280	1901847	1901869	400	250	160	2481118	2481121
1904281	1901845	1901870	400	405	201	2481106	2481121
1904282	1901843	1901871	600	250	121	2481105	2481121
1901858	1904277	1901872	600	250	161	2481105	2481121

# RS PRO Aluminum Junction Box Accessories

## Earth Stud Assembly



### Earth Stud Assembly

Material – SS304  
RoHS Compliant



RS PRO Article Nos (Enclosures)			Enclosure Dimensions External (mm)			Earth Stud Sizes	Earth Stud Part No
			Length	Width	Height		
GRP BLACK	GRP GREY	GRP ATEX					
9188724	1901856	1444450	80	75	55	M4	2481101
9188749	9188736	1444451	110	75	55	M4	2481101
9188758	9188746	1444452	122	120	90	M6-M8-M10	2481102, 2481103, 2481104
1901854	1904276	1901865	80	75	75	M4	2481101
9188768	9188761	1444453	160	75	55	M4	2481101
9188783	9188770	1444454	160	75	75	M4	2481101
9188792	9188780	1444455	160	160	90	M6-M8-M10	2481102, 2481103, 2481104
1901852	1904275	1901866	110	75	75	M4	2481101
9188803	9188806	1444456	190	75	55	M4	2481101
1904279	1901850	1901867	190	75	75	M4	2481101
9188828	9188815	1444457	220	120	90	M6-M8-M10	2481102, 2481103, 2481104
9188837	9188825	1444458	255	250	120	M6-M8-M10	2481102, 2481103, 2481104
9188847	9188840	1444459	260	160	90	M6-M8-M10	2481102, 2481103, 2481104
9188862	9188859	1444460	360	160	90	M6-M8-M10	2481102, 2481103, 2481104
9188871	9188869	1444461	400	250	120	M6-M8-M10	2481102, 2481103, 2481104
		1444462	400	405	120	M6-M8-M10	2481102, 2481103, 2481104
1901848	1904274	1901868	255	250	160	M6-M8-M10	2481102, 2481103, 2481104
1904280	1901847	1901869	400	250	160	M6-M8-M10	2481102, 2481103, 2481104
1904281	1901845	1901870	400	405	201	M6-M8-M10	2481102, 2481103, 2481104
1904282	1901843	1901871	600	250	121	M6-M8-M10	2481102, 2481103, 2481104
1901858	1904277	1901872	600	250	161	M6-M8-M10	2481102, 2481103, 2481104