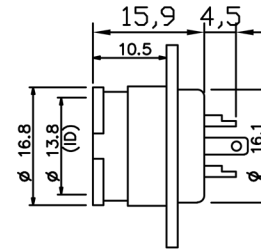
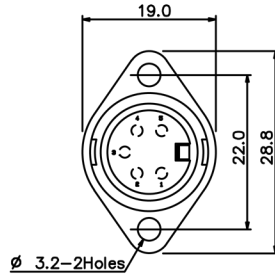
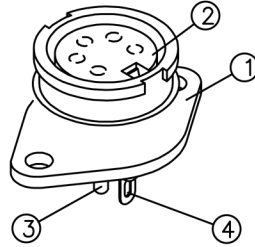


ARRANGEMENT OF CONTACTS

PARTS	B2002-3P	B2002-4P	B2002-5P	B2002-5A	B2002-6P	B2002-7P	B2002-8P
ANGLE	180°	216°	180°	240°	240°	270°	270°
POSITION OF VIEWS							

SPECIFICATIONS

Dielectric strength	1,000V AC/1 Minute
Contact resistance	20M Ω Max.
Insulation resistance	100M Ω Min. at 500V DC
Rating	100V AC 2A



4	GROUNDING	1	BSR-H (0.2t)	[C2680R]	SILVER PLATED	3-5U"
3	CONTACT TERMINAL	5	BSR-H (0.2t)	[C1519R-H]	SILVER PLATED	3-5U"
2	PLASTIC CORE	1	ABS	[777D]	BLACK	HB
1	METAL BODY	1	DIECAST		NICKEL	3-5U"
P/N	PART NAME	Q'TY	MATERIAL		PLATING	REMARKS

DRAWN	KIDD	APP'D	UNIT	MM	TOLERANCE		TITLE	B2002-5A METAL DIN CIRCULAR SOCKET			SHEET
	SCALE							1:1	.x ±0.20 .xx ±0.10 .xxx ±0.05 .xxxx ±0.03 ANGULA ±1°	PART NO. B2002-5A	