



Professionally approved products.

Product Datasheet

Solder sleeve

Stock No:8726286

EN



RoHS✓



Applications

One piece design, it consists of transparent heat shrinkable sleeve and fluxed solder. Provides insulation, inspection, strain relief and water proof. Makes installation easily and lower the installed cost. Color hot-melt glue on two ends of heat shrinkable tube, it's very convenience to use the exact wire dimension.

Characteristics

Shrinkage ratio 2: 1

Waterproof for wiring splices

Transparent sleeve provides precise inspection

Easy control soldering process

Operating temperature range

Operating Temp. $-55^{\circ}\text{C} \sim 25^{\circ}\text{C}$

Minimum Shrink Temp. 60°C

Minimum Fully Recover Temp. 138°C

Starting temperature of solder melt : 138°C

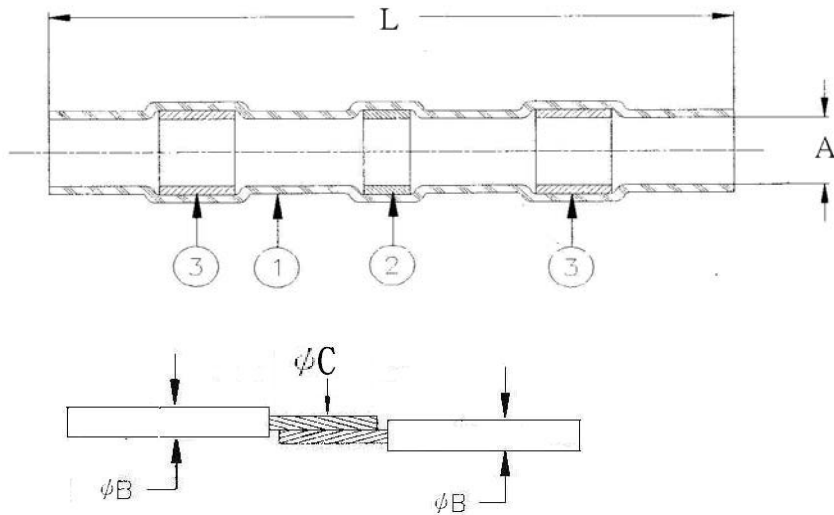
Technical Data

Property	Test Method	Typical Value
Dielectric strength	ASTM D 2671	2.0 KV/mm
Composition of solder	-	Sn/Pb

Specifications

RS Article No	Dimensions (mm)		Wire Dimensions(mm)		Cable Size	color
	A(min)	L(max)	B(min)	C(min)	A.W.G(mm ²)	
8726283	2.7±0.3	24±1.5	1.4	1.2	22-18(0.5-1.0)	Blue
8726286	4.7±0.3	27±1.5	2.4	2.0	16-14(1.5-2.5)	Blue
8726280	8.0±0.3	31±1.5	3.8	3.3	12-10(4.0-6.0)	Blue
8726299	11.0±0.3	34±1.5	6.0	4.5	10-6(6.0-14.0)	Blue
8726292	13.5±0.3	45±1.5	7.5	7.0	8-4(8.0-22.0)	White

RS Article No	Description	Contain	Color	Quantity
8726296	Solder sleeve assortment kit	8726283	Blue	8 pcs
		8726286	Blue	6 pcs
		8726280	Blue	5 pcs
		8726299	Blue	4 pcs
		8726292	White	2 pcs



- 1.Heat shrinkable tubing
- 2.Low temperature solder sleeve
- 3.Waterproof hot melt adhesive