

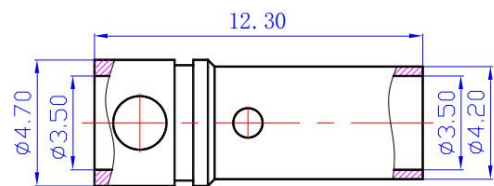


Datasheet

RS PRO GC3510 3.5mm Banana Female connector

Stock number: 180-5410

EN



Section

Material & Parameter

Recommend USE: Motor/controller
Metal Material: Brass Gold Plated
Use Times: 2000 TIMES
Cable Spec: 16AWG

Contact Resistance: 0.45mΩ
Rated Current: 25A
Momentary Current: 50A

Remark: Data sheet will change according with the test background