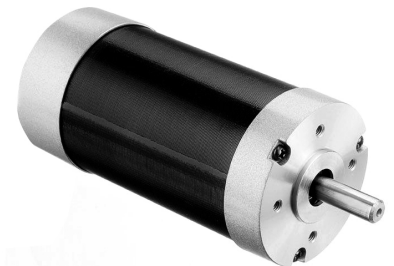


SPECIFICATION

Model	2163795	
1	N° OF POLE	4
2	N° OF PHASE	3
3	RATED VOLTAGE	V 36
4	RATED SPEED	rpm 4000
5	RATED TORQUE	Nm 0,44
6	MAX PEAK TORQUE	Nm 1,27
7	TORQUE CONSTANT	Nm/A 0,062
8	LINE TO LINE RESISTANCE	Ω 0,35
9	LINE TO LINE INDUCTANCE	mH 0,95
10	MAX PEAK CURRENT	A 21
11	RATED CURRENT	A 7,10
12	NO-LOAD CURRENT	mA 540
13	LENGTH	mm 113,6
14	ROTOR INERTIA	$g \cdot cm^2$ 230
15	WEIGHT	Kg 1,2



CONNECTION

Lead N°	Color	Gauge	Function
1	RED	UL1430 AWG26	VCC HALL SENSOR +5 TO +24 VDC
2	BLUE	UL1430 AWG26	HALL A
3	GREEN	UL1430 AWG26	HALL B
4	WHITE	UL1430 AWG26	HALL C
5	BLACK	UL1430 AWG26	HALL SENSOR GROUND
6	YELLOW	UL1430 AWG20	PHASE U
7	RED	UL1430 AWG20	PHASE V
8	BLACK	UL1430 AWG20	PHASE W

CHARACTERISTICS

Item	
HALL EFFECT ANGLE	120°
SHAFT RUN OUT	0,025 mm
INSULATION CLASS	B
RADIAL PLAY (460 g load)	0,025 mm
AXIAL PLAY (4000 g load)	0,025 mm
MAX RADIAL FORCE (10 mm FROM FRONT FLANGE)	75N
MAX AXIAL FORCE	15N
DIELECTRIC STRENGTH	500 VAC FOR ONE MINUTE
INSULATION RESISTANCE	100 Mohm min. 500 VDC