



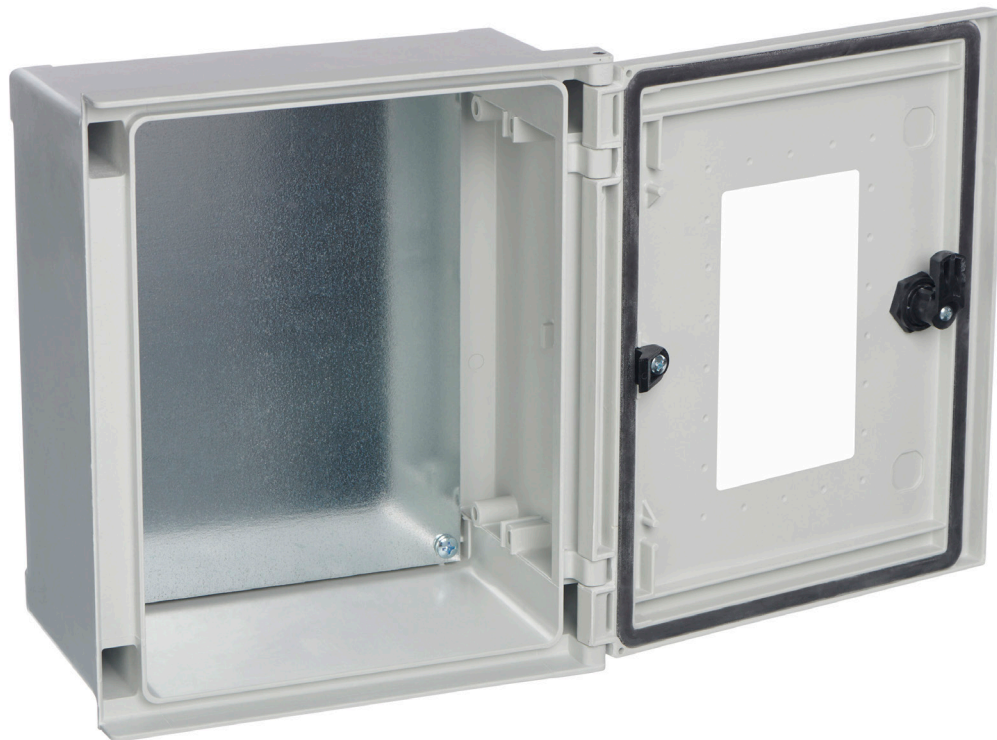
Datasheet

RS PRO IP66 MONOBLOCK INDUSTRIAL ENCLOSURE GLAZED DOOR GLASS REINFORCED POLYESTER (GRP)

H:300 × W:250 × D:140mm

Stock number: xxx-xxx

EN



Feature

- **Manufactured from fibre glass reinforced polyester, moulded by hot compression.**
- **Colour Light Grey RAL 7035**
- **Self-extinguishable: 960°C test withstand. Halogen free. Double insulation. No electrical contact risks.**
- **Degree of protection IP66 UNE 20324 (EN 60529).**
- **Certification of compliance with IEC62208 enclosure standard. Suitable for indoor or outdoor use.**
- **Large door opening (180°). Reversibility for installation right or left door opening.**
- **Anti-intruder hinges system.**
- **Other lock options available**
- **Galvanised steel mounting plate.**
- **Resistant to harsh atmospheres.**
- **Light weight gives an easy installation.**
- **10+ years. Long life lasting without maintenance under standard environmental conditions.**

rspro.com

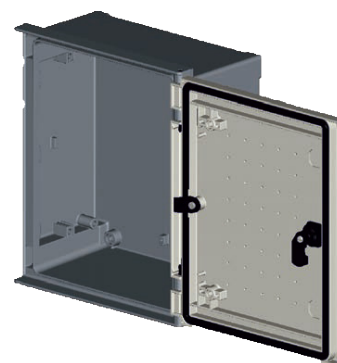
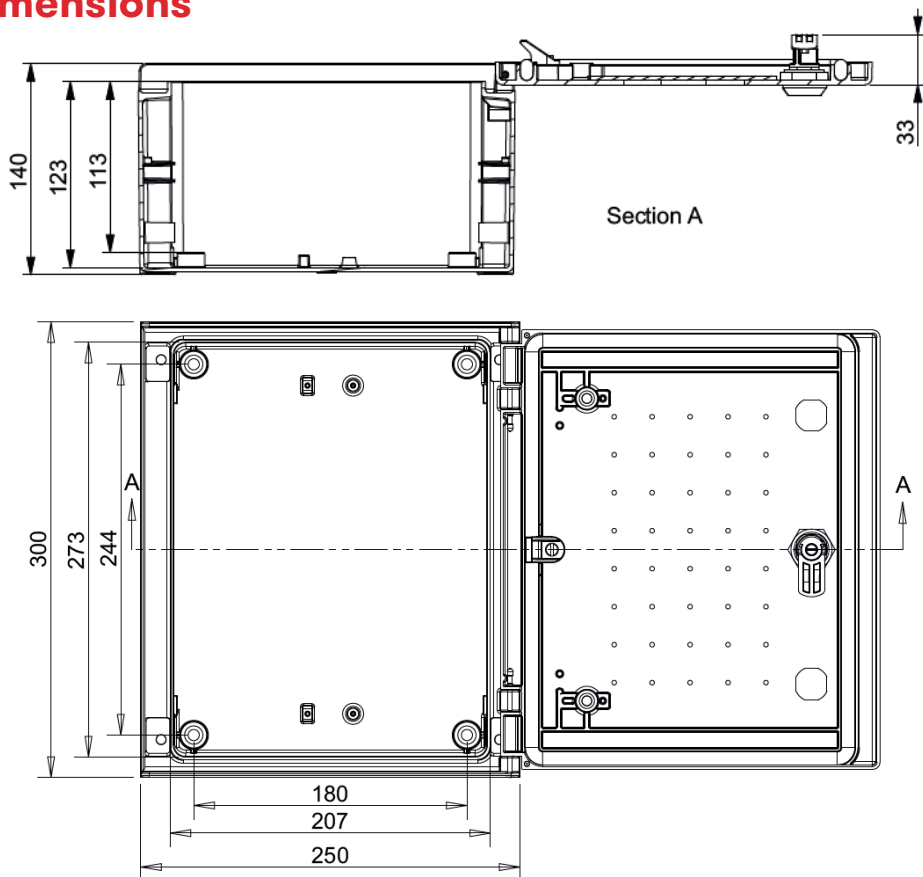
Description

Standard enclosure colour light grey RAL 7035 supplied with galvanised steel back plate & direct wall mounting fixings

Dimensions H:300 × W:250 × D:140mm

Weight 2.72kg

Dimensions



Installation and assembly system

Inside Installation	Yes	Wall Surface	Yes
Outdoor Installation	Yes	Floor Mounting	Yes
Flush Mounting	No	Pole Mounting	Yes

Environmental Performance

Minimum temperature	-30°C
Maximum temperature	70°C
Compression resistance	100kg
IP dust water protection degree IEC-60529	66
IK impact protection degree IEC-62208	10

Electrical Performance

Nominal tension direct current up to:	1500 Vdc
Nominal tension alternating current up to:	1000 Vac
Maximum power dissipation $\Delta T=40^{\circ}\text{C}$ (wall surface)	36.2 W