

FEATURES

- Stainless steel robust construction
- Anti-vandal design
- Easy installation
- Screw terminals
- Illuminated & no light options
- 16mm – 30mm options
- IP rated
- Range of voltages

RS PRO Push Button Switches

RS Stock No.: 2489273



Image for illustration purposes only

RS Professionally Approved Products bring to you professional quality parts across all product categories. Our product range has been tested by engineers and provides a comparable quality to the leading brands without paying a premium price.

Product Description

- *High quality panel mount switches constructed from stainless steel for superior durability for both internal and external applications.*
- *Typically used for door and gate entry control, plant and machinery, control panels, escalators and moving walkways, lifts and instrument control, process handling and access equipment.*
- *Often used with panel mount indicators, panel alarms, buzzers and display screens.*

General Specifications

Type	SW 30mm Scr Mom Pwr RG 24V
Switch Operation	Momentary
Contact Configuration	1NO1NC DPST
Illuminated	Yes
LED Voltage	24V
LED Colour	Red-Green
Actuator Shape	Round
Legend	Power
Package Contains	1 x Switch, 1 x Hex Nut, 1 x O-Ring

Material Characteristics	
Case	Stainless Steel
Base	PBT
Contact	Silver alloy
Terminals	Screw

Electrical Specifications

Voltage Rating	250VAC
Terminal Type	Screw
Wire Range	1.5mm ²

Contact Specifications	
Contact Current Rating	5A at 250VAC
Contact Resistance	≤50mΩ
Insulation Resistance	≥1,000MΩ
Dielectric Strength	1,780VAC
Total Travel	3.0mm +/- 0.2mm
Electrical Life	≥50,000 Cycles at Full Load

Mechanical Specifications

Mounting Type	Panel Mount
Panel Thickness	1mm (min) to 14mm (max)
Panel Cut Out Diameter	30.20mm
Mechanical Life	≥1,000,000 operations
Actuating Force	3-5N
Torque	5-14Nm applied to rear locking nut

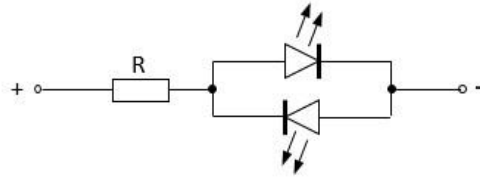
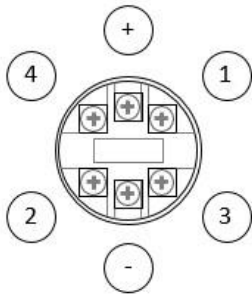
Operation Environment Specifications

Maximum Operating Temperature	+80°C
Minimum Operating Temperature	-40°C

Protection Category

IP Rating	IP65
Impact Protection Rating	IK10

DIMENSIONAL/SCHEMATIC DIAGRAMS / ILLUSTRATIONS



The LED illumination is polarity insensitive

