

rotronic

Datenblatt - Fiche technique - Data sheet

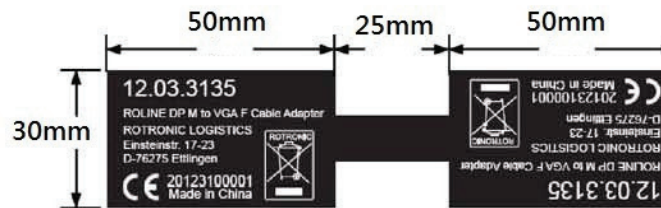
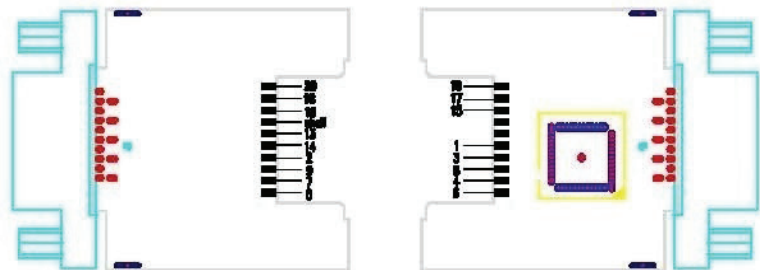
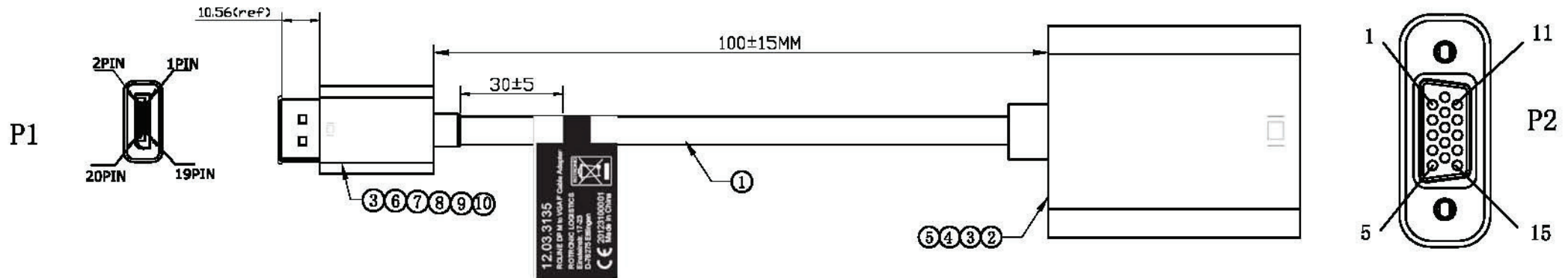
12.03.3135



ROLINE DisplayPort-VGA Adapter, DP ST – VGA BU,

ROLINE Adaptateur DisplayPort-VGA, DP M – VGA F,

ROLINE DisplayPort-VGA Adapter, DP M – VGA F,



PIN Assignment

P1	PCB	Color	PCB
1	RED	1	1
3	WHITE	3	3
2	DRAIN	2	2
4	DRAIN	4	4
5	BROWN	5	5
6	WHITE	6	6
15	BLACK	15	15
17	WHITE	17	17
18	DRAIN	18	18
18	PINK	18	18
18	WHITE	18	18
4	PURPLE	13	13
13	PURPLE	14	14
19	RED	19	19
20	GREY	20	20
SHELL			SHELL
	DRAIN		

NO	DESCRIPTION	Q'TY	UNIT
10	PE	1	pcs
9	DisplayPort M ABS FRONT SHELL WHITE	1	pcs
8	DisplayPort M ABS SHELL WHITE MARKING: □ (PT:COOL GREY 8C)	1	pcs
7	DisplayPort M SHELL NICKEL PLATED PIN GOLD PLATED WITHOUT HOOT	1	pcs
6	DisplayPort M DUST CAP	1	pcs
5	VGA (DP to VGA) ABS SHELL WHITE MARKING: □ (PT:COOL GREY 8C)	1	pcs
4	VGA F(DP to VGA) ABS FRONT SHELL	1	pcs
3	65P WHITE PVC	8	g
2	DP M to VGA (NICKEL) F PCB+SMT+SOLDER	1	pcs
1	Display Port DL20276 [34AWG(7/0.06TC)*1PR+EAM]*5+32AWG(7/0.08TC)*5C +D(BC)+AB 85% (16/7/0.12AL) OD:4.5MM WHITE	L	M

		TOLERANCE			
		INCHES	M/M		
.X		.015	.30		
.XX		.010	.10		
.XXX		.005	.05		
DRAWN BY	joe			ROLINE to M - VGA F Adatper Cable, White	
CHECK BY				CUSTOMER :	
APPD BY				CUSTOMER P/N :	12.03.3135
		SCALE	NONE	DRAWING NO. :	REV. A
		UNIT	MM		
		DATE	2013. 01. 11		1/3