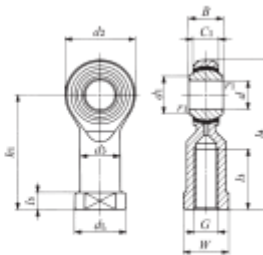


Datasheet

M5 x 0.8 Female Steel Rod End, 5mm Bore Size, 35mm Long , M5 x 0.8 Thread Size, Metric Thread Standard Female

RS Stock number 198-8945



PHS...EC

Mass (Ref.) g	Boundary dimensions mm															Ball dia. mm (inch)	Dynamic load capacity C_d N	Static load capacity C_s N
	d	Thread G	d_2	C_1	B	d_1	l_4	h_1	l_3	l_5	W	d_3	d_L	$r_{s\min}^{(1)}$				
PHS 5EC	16.5	5	M 5x0.8	16	6	8	7.7	35	27	12.5	4	9	9	11	0.2	11.112 ($\frac{7}{16}$)	6 540	4 010