

# Outdoor LTE and GPS Combo Antenna

## 2 × LTE, 1 × GPS, IP67

**multicomp** PRO



**RoHS  
Compliant**

### Environmental & Mechanical Characteristics

- Temperature : -40°C to +70°C
- Humidity : 95% @ 55°C
- Waterproof Rating : IP67
- Housing Color : Grey
- Housing Material : PC (UL 94 V-0 f1)
- Cable length : L=3m, LMR-200 for LTE; LMR-100A for GPS/GNSS
- Dimensions : 240mm (L) × 65.6mm (W) × 38.7mm (T)

### LTE-1 / LTE-2 Specification

- Frequency Range : 698MHz to 960MHz / 1710MHz to 2170MHz / 2300MHz to 2690MHz
- Polarization : Linear
- HPBW / Horizontal : 360°
- HPBW / Vertical : 60°
- Peak Gain : 3.3dBi Max. (exclude cable loss)
- Efficiency : 70% typ.
- V.S.W.R : 3 max:1 typ
- Power Handling : 2W (cw)
- Impedance : 50Ω
- Connector : STD - SMA Plug

### GPS/GLONASS Antenna Specification

#### Overall Specification. (Through Antenna, LNA, without cable loss)

- Frequency Domain : 1575.42MHz to 1602MHz
- Zenith Gain : 1575.42MHz @ 29.2 ±3dB  
1602MHz @ 29 ±3dB
- Output Impedance : 50Ω
- Output V.S.W.R : 2 max:1 typ.
- Operation Voltage : 3V ±0.1V
- Current : 6 ±2mA

#### LNA Specification

- Frequency Domain : 1565.42MHz to 1605.89MHz
- Gain : 1575.42MHz @ 28 ±3dB  
1602MHz @ 27 ±3dB
- Noise Figure : 3dB typ
- Filter Outband attenuation : 25dB typ. @ ±50MHz
- Output V.S.W.R : 2 typ.
- Operation Voltage : 3 ±0.1V
- Power Consumption : 6 ±2mA

### Patch Specification

- Frequency Domain : 1575.42MHz to 1602MHz
- Zenith Gain : 1575.42MHz @ 1.2dBic  
1602MHz @ 2dBic
- Output Impedance : 50Ω
- Polarization : R.H.C.P

Newark.com/multicomp-pro  
Farnell.com/multicomp-pro  
Element14.com/multicomp-pro

**multicomp** PRO

# Outdoor LTE and GPS Combo Antenna

## 2 × LTE, 1 × GPS, IP67



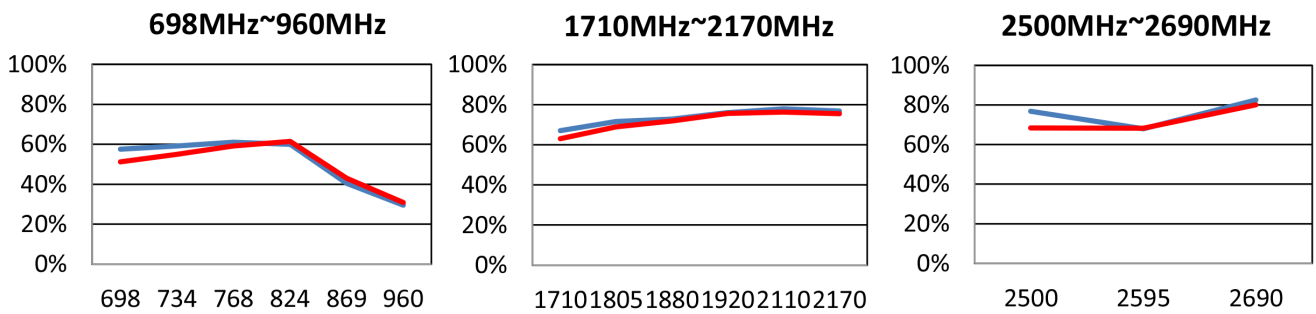
### Performance Summary

#### VSWR

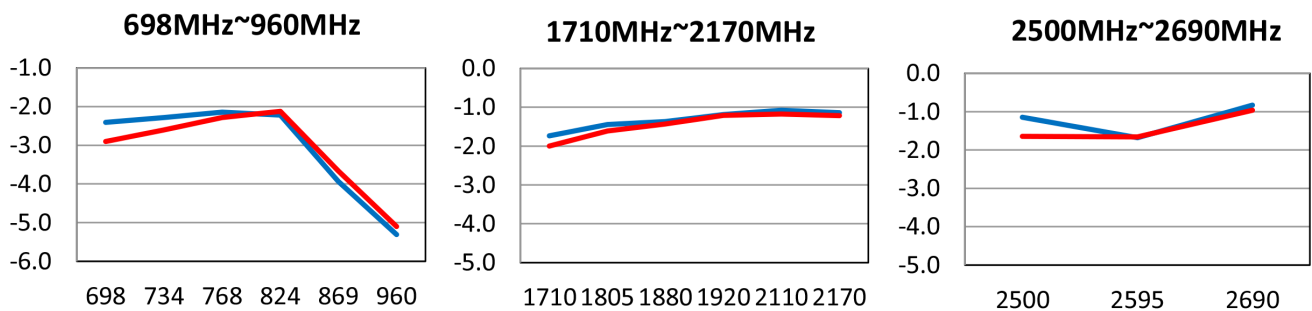
Frequency (MHz)	698 to 960	1710 to 2170	2500 to 2690
VSWR	4 Max. :1	2.5 Max. :1	

### Gain Table – LTE-1 / LTE-2 Antenna

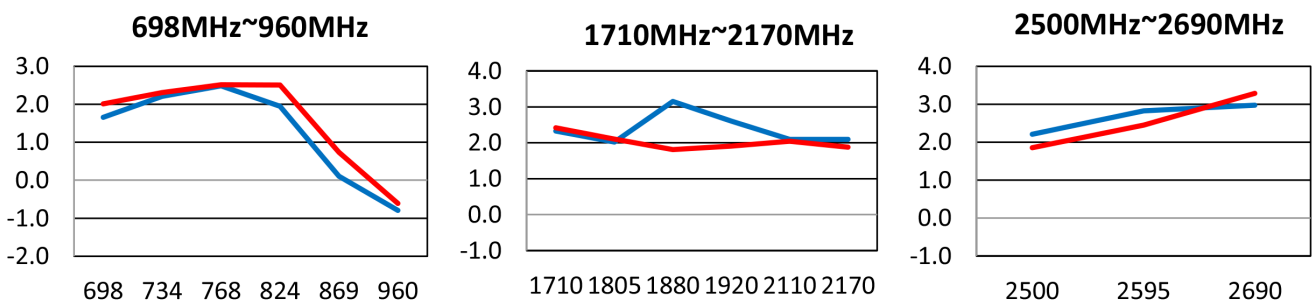
#### EFFICIENCY



#### Average Gain



#### Peak Gain



— LTE-1  
— LTE-2

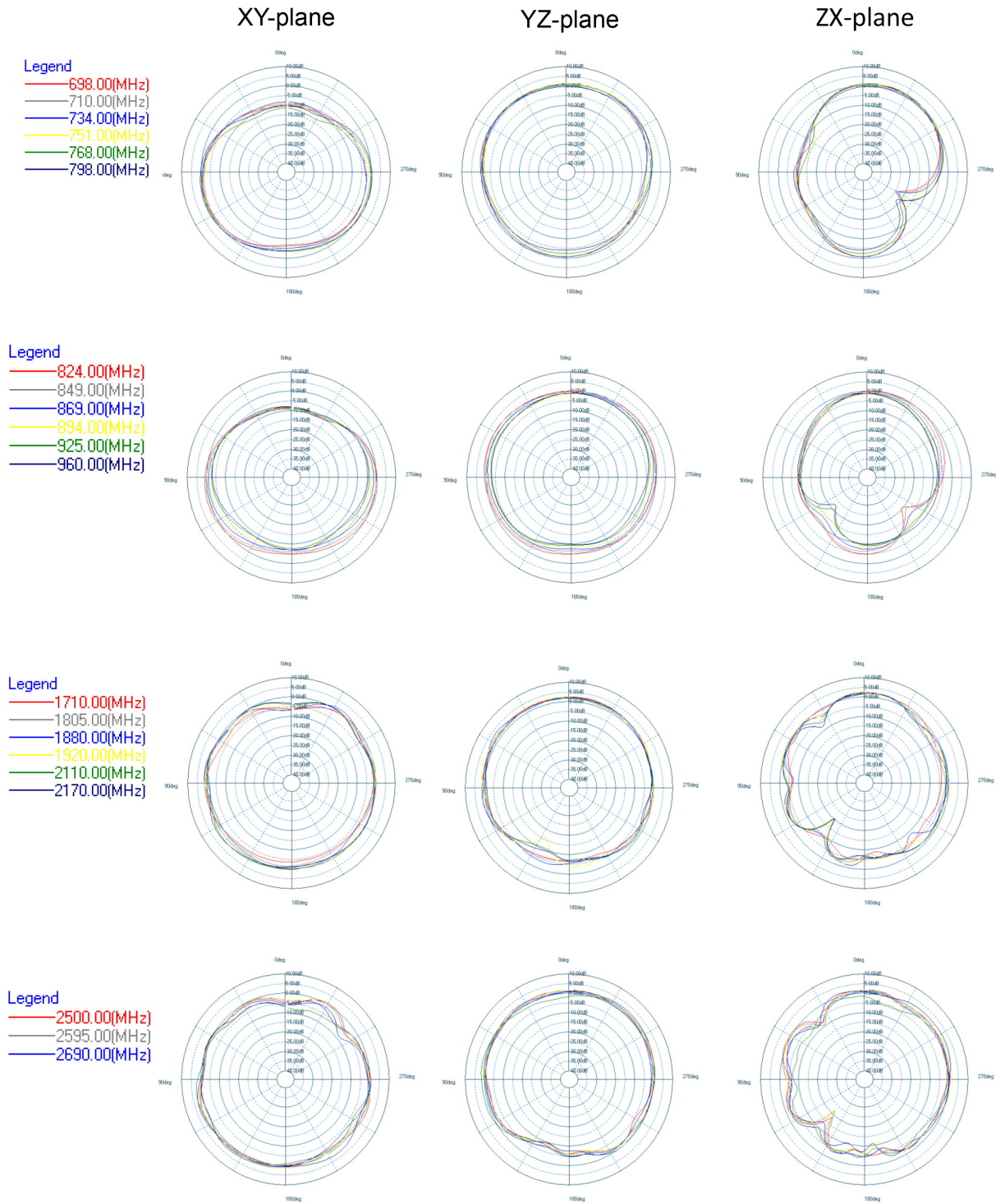
# Outdoor LTE and GPS Combo Antenna

## 2 × LTE, 1 × GPS, IP67

**multicomp** PRO

### Radiation Pattern

#### LTE-1 Antenna



Newark.com/multicomp-pro  
 Farnell.com/multicomp-pro  
 Element14.com/multicomp-pro

**multicomp** PRO

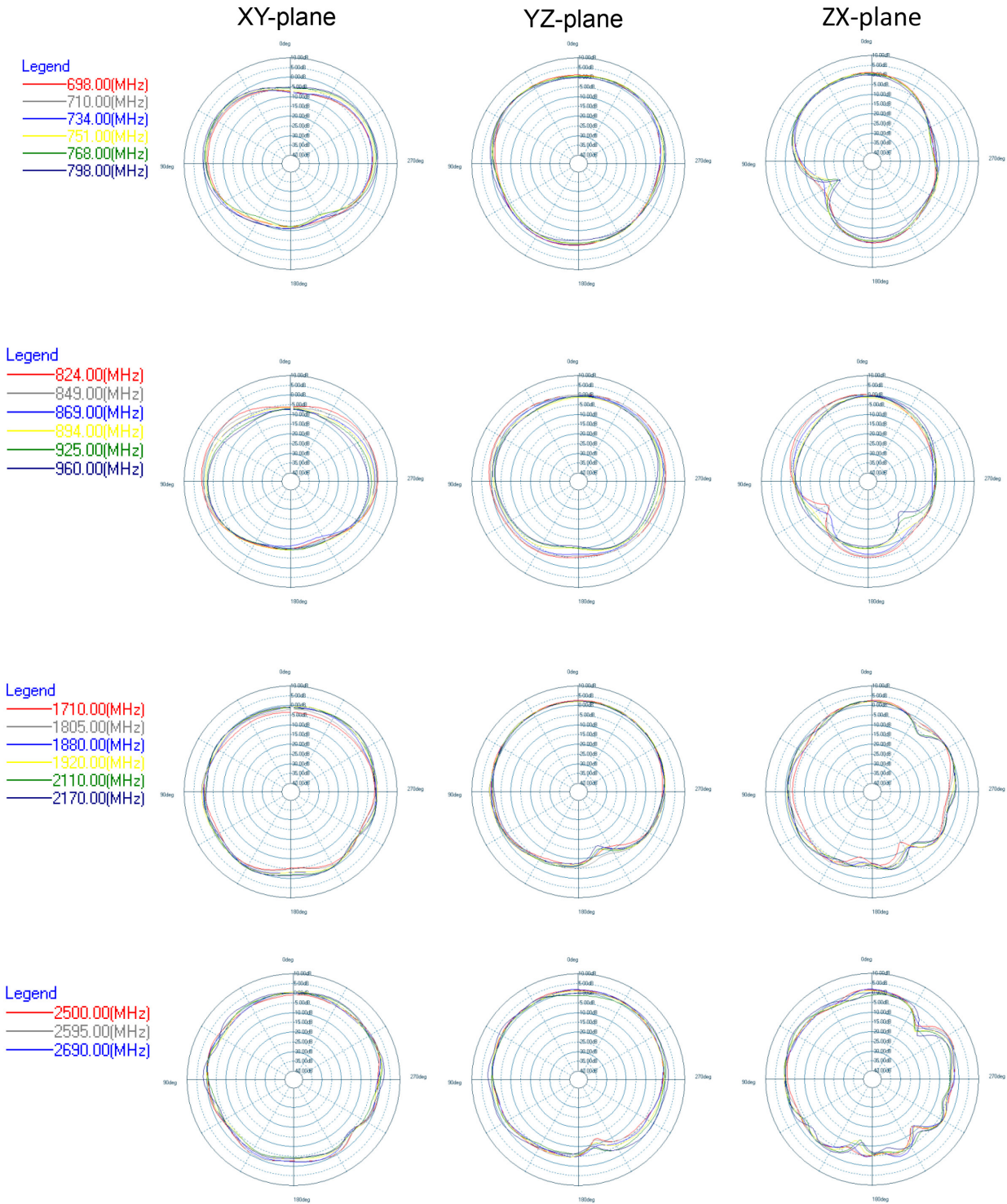
# Outdoor LTE and GPS Combo Antenna

## 2 × LTE, 1 × GPS, IP67

**multicomp** PRO

### Radiation Pattern

#### LTE-2 Antenna



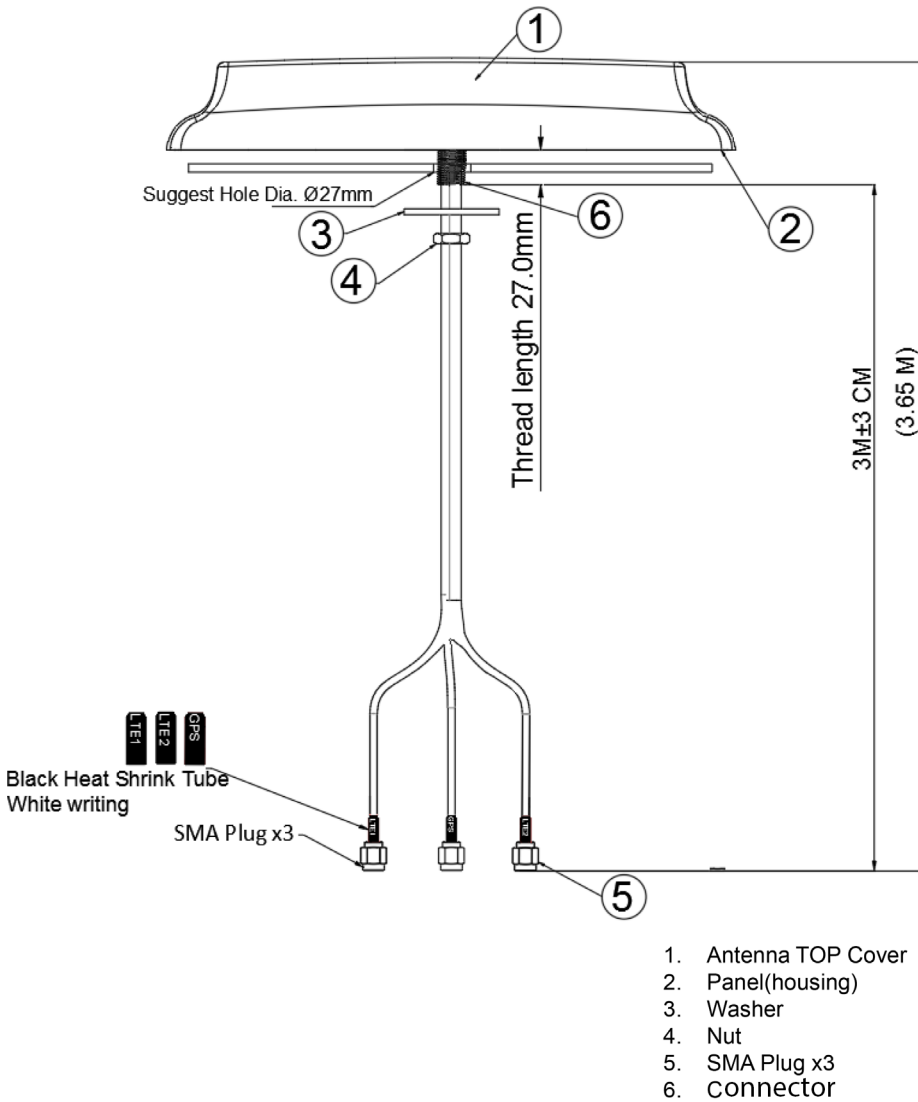
Newark.com/multicomp-pro  
 Farnell.com/multicomp-pro  
 Element14.com/multicomp-pro

**multicomp** PRO

# Outdoor LTE and GPS Combo Antenna

## 2 × LTE, 1 × GPS, IP67

**multicomp** PRO



### Part Number Table

Description	Part Number
Outdoor Antenna, 2 × LTE and 1 × GPS, Linear, Roof Mount, 3m Cable, IP67	MP001580

**Important Notice :** This data sheet and its contents (the "Information") belong to the members of the AVNET group of companies (the "Group") or are licensed to it. No licence is granted for the use of it other than for information purposes in connection with the products to which it relates. No licence of any intellectual property rights is granted. The Information is subject to change without notice and replaces all data sheets previously supplied. The Information supplied is believed to be accurate but the Group assumes no responsibility for its accuracy or completeness, any error in or omission from it or for any use made of it. Users of this data sheet should check for themselves the Information and the suitability of the products for their purpose and not make any assumptions based on information included or omitted. Liability for loss or damage resulting from any reliance on the Information or use of it (including liability resulting from negligence or where the Group was aware of the possibility of such loss or damage arising) is excluded. This will not operate to limit or restrict the Group's liability for death or personal injury resulting from its negligence. Multicomp Pro is the registered trademark of Premier Farnell Limited 2019.

Newark.com/multicomp-pro  
 Farnell.com/multicomp-pro  
 Element14.com/multicomp-pro

**multicomp** PRO