

FEATURES

- Inductive sensors offer precise detection
- The sensors are completely encapsulated
- They also have an IP rating of 67
- Additional features include a short circuit
- 2m PVC pre-wired

RS PRO M12 x 1 Inductive Sensor - Barrel, NPN-NO Output, 4 mm Detection, IP67, Cable Terminal

RS Stock No.: 701-8250



RS Professionally Approved Products bring to you professional quality parts across all product categories. Our product range has been tested by engineers and provides a comparable quality to the leading brands without paying a premium price.

Product Description

Introducing the range of RS PRO Inductive Proximity Sensors. These versatile and high-quality sensors are an essential addition to any environment where measurement of attributes like pressure, thickness, etc. are integral to business operations, like manufacturing plants and industrial environments. With the RS PRO seal of approval, you are guaranteed a premium performance product, without the premium product price tag.

General Specifications

Sensing/Detection Range	4mm
Output Type	NPN/NO
Connection/Terminal Type	Cable
Cable length	44mm
Minimum Operating Temperature	-25°C
Maximum Operating Temperature	+75°C

Electrical Specifications

Operating Supply Voltage	10V→30V dc
Switching Current	200mA
Switching Frequency	2kHz
Voltage drop	≤ 2V
Temperature drift / Hysteresis	±10% / 5% ...15%
Wiring technique	3 wire
Contact maximum DC Voltage	30V
Short Circuit Overload Protection	YES
Reverse Polarity Protection	YES
Overload Protection	YES

Mechanical Specifications

Body Style	Barrel
Mounting Type	Non Flush
Thread Size	M12 x 1
Housing Material	Metal, Nickel-plated brass
Length	44mm
Shock and Vibration Resistance	30 g, 11 ms/10 Hz ... 55 Hz, 1 mm

Protection Category

IP Rating	IP67
------------------	------

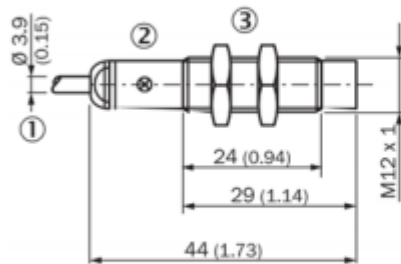
Approvals

Compliance/Certifications	cULus Listed, EN 60947-5-2, RoHS Compliant, UL
----------------------------------	--



Dimensional drawing (Dimensions in mm (inch))

IME12 Short-body housing, cable, non-flush

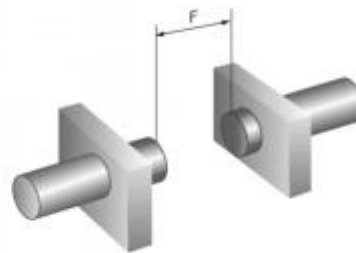
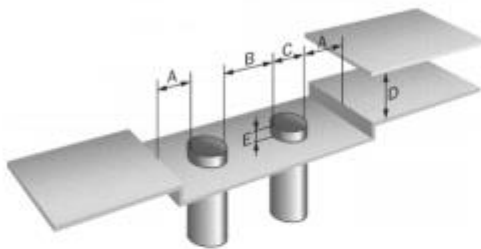


1. Connection
2. Indication LED
3. Fastening nuts (2x); width across 17, metal



Installation

Non-flush installation



Connection diagram

Cd-001

