

Datasheet

Quick Acting Ceramic Tube Fuse, 0.16-1.6A, 5x20mm

Stock No: 1778048, 1778049

RS Pro



Specifications:

Materials

Tube (Body): Non-Transparent ceramic tube fuse. No breaking or deformation is allowed.

Two brass end caps: Made of brass of good conductivity.

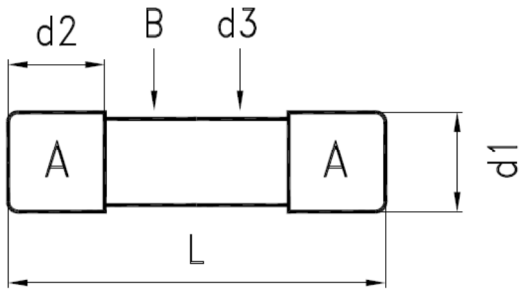
Coating of brass caps: Plating the surface with nickel. If the indication is added with "S", it with "S", it needs to be plated with silver.

Interrupting Ratings

1500 amperes at 250V AC

Operating Temperature

-55°C to +125°C

Drawing (mm):


NO.	Part Name		Volume
A	Brass Cap	Nickel Plating	2
B	Ceramic Tube	Non-Transparent Ceramic Tube	1
d1	Dia. of Cap	$5.2^{+0.1}_{-0.2}$ mm	
d2	Height of Cap	5.25 ± 0.1 mm	
d3	Dia. of Ceramic	4.50 ± 0.2 mm	
L	Body of Fuse	20.00 ± 0.5 mm	

Electrical Characteristic:

Rating	150% Rating		210% Rating		275% Rating		400% Rating		1000% Rating	
	Min.	Max.	Min.	Max.	Min.	Max.	Min.	Max.	Min.	Max.
63mA~4A	60 min			30 min	10 ms	2 sec	3 ms	300 ms		20 ms

Ampere Rating		Nominal Resistance Cold Ohms Range	Nominal Melting I^2t A ² Sec
160	mA	1.8942~3.5178	0.01272
1.6	A	0.0641~0.1191	1.34055



ENGLISH

Reference:

Stock No	Rating amperes
1778048	160mA 250V
1778049	1.6A 250V