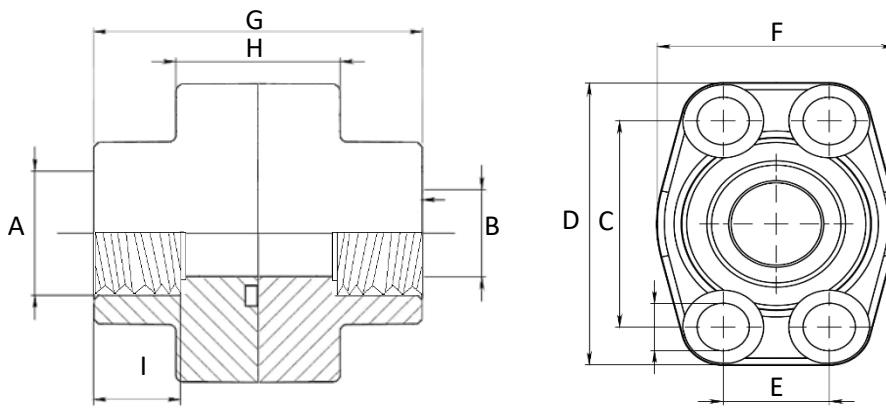


**BSP THREADED DOUBLE FLANGES**



**Series 3000**

WP (Bar)	Size	Type	Dimensions									
			A	B	C	D	E	F	G	H	I	Screws
345	1/2"	DFS080G	1/2"	13	38.10	57	17.48	46	72	32	19	M8x30
345	1/2"	DFS080G038	3/8"	13	38.10	57	17.48	46	72	32	19	M8x30
345	3/4"	DFS100G	3/4"	19	47.63	65	22.23	50	72	36	19	M10x35
345	3/4"	DFS100G012	1/2"	13	47.63	65	22.23	50	72	36	19	M10x35
345	1"	DFS102G	1"	25	52.37	70	26.19	55	76	36	22	M10x35
345	1"	DFS102G034	3/4"	19	52.37	70	26.19	55	70	42	19	M10x40
276	1 1/4"	DFS104G	1 1/4"	32	58.72	79	30.18	68	82	42	22	M10x40
276	1 1/4"	DFS104G100	1"	25	58.72	81	30.18	52	84	50	22	M10x40
207	1 1/2"	DFS106G	1 1/2"	38	69.85	93	35.71	78	90	50	24	M12x45
207	1 1/2"	DFS106G114	1 1/4"	32	69.85	95	35.71	78	90	54	22	M12x45
207	2"	DFS108G	2"	51	77.77	102	42.88	90	90	50	30	M12x45
207	2"	DFS108G112	1 1/2"	38	77.77	102	42.88	90	90	50	24	M12x45
172	2 1/2"	DFS110G	2 1/2"	63	88.90	114	50.80	105	100	50	30	M12x45
173	2 1/2"	DFS110G200	2"	51	88.90	114	50.80	105	100	50	30	M12x45
138	3"	DFS112G	3"	73	106.38	134	61.93	124	100	54	34	M16x50
138	3"	DFS112G212	2 1/2"	63	106.38	134	61.93	124	100	54	30	M16x50
34	3 1/2"	DFS114G	3 1/2"	89	120.65	152	69.85	136	96	54	34	M16x50
34	3 1/2"	DFS114G300	3"	73	120.65	152	69.85	136	96	54	34	M16x50
34	4"	DFS116G	4"	99	130.18	162	77.77	146	96	54	34	M16x50
34	4"	DFS116G312	3 1/2"	89	130.18	162	77.77	146	96	54	34	M16x50
34	5"	DFS118G	5"	120	152.40	184	92.08	180	100	60	30	M16x55

**Designation for Order:**

Double Flanges

(Flat side & Oring side)

ST52.3	DFS...S
SS316	DFX...S

Counter-Flanges

(Flat side)

ST52.3	GFS...S
SS316	GFX...S

Flanges

(Oring side)

ST52.3	AFS...S
SS316	AFX...S