

## FEATURES

- EMC shielding to protect the cable
- Nickel plated brass body with neoprene seal
- Reliable gland cable
- Operates over an expansive operating temperature
- Various thread sized glands available depending upon your requirements

## RS PRO PG 16 Cable Gland with Locknut, Brass, IP68

RS Stock No.: 835-4093



RS Professionally Approved Products bring to you professional quality parts across all product categories. Our product range has been tested by engineers and provides a comparable quality to the leading brands without paying a premium price.

## Product Description

These RS PRO EMC cable glands are used throughout a number of industries, in relation to cable and wiring, particularly in instrumentation and control, automated systems, lighting, data and telecommunications environments.

## General Specifications

<b>Thread Size</b>	PG 16
<b>Material</b>	Brass
<b>Colour</b>	Metallic
<b>Locknut Included</b>	Yes
<b>Pack size</b>	1
<b>Sealing</b>	Nitrile Butadiene Rubber
<b>Application</b>	Instrumentation and control, automated systems, lighting, data and telecommunications environments

## Mechanical Specifications

<b>Maximum Cable Diameter</b>	14mm
<b>Minimum Cable Diameter</b>	8mm
<b>Thread Length L2</b>	34mm
<b>Thread outer diameter D1</b>	22.5mm
<b>Locknut Spanner size</b>	27mm
<b>Locknut thickness</b>	3mm

## Operation Environment Specifications

<b>Minimum Operating Temperature</b>	-40°C
<b>Maximum Operating Temperature</b>	100°C
<b>Operating Temperature Range</b>	-40°C to 100°C

## Protection Category

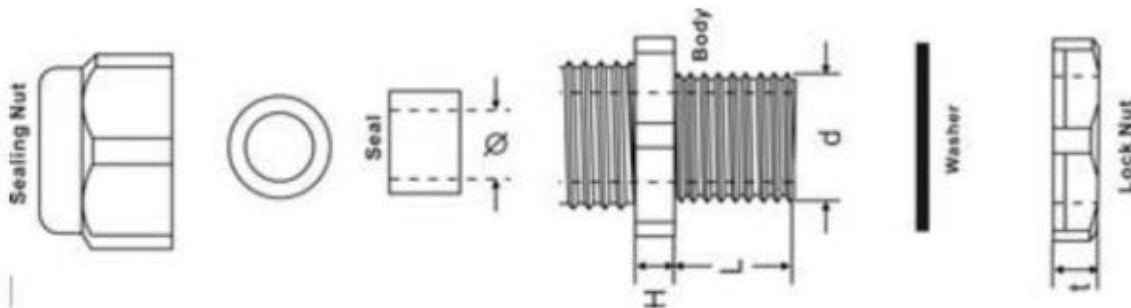
IP Rating	IP68
-----------	------

## Approvals

Compliance/Certifications	EN 61340
Standards Met	CE, RoHS Compliant

## Dimensions:

### EMC Brass Cable Gland With Locknut



<b>MATERIAL:</b>	BRASS NICKEL PLATED						
<b>SEALING:</b>	NEOPRENE						
<b>CLAW:</b>	PA6						
<b>STANDARD:</b>	RoHS;IP68						
<b>TEMP.:</b>	-40°C ~ +100°C, SHORT TIME+120°C						
EASE CODE	SIZE	CABLE RANGE	d	L	H	LOCKNUT	
		(MM)	(MM)	(MM)	(MM)	t	SPANNER SIZE
8354119	M16×1.5	04-Aug	16	7	6	3.2	18
8354112	M20×1.5	06-Dec	20	8	7	3	22
8354116	M25×1.5	Oct-16	25	8	9	3	27
8354125	M32×1.5	15-22	32	9	9	3.5	35
8354128	M40×1.5	21-30	40	10	11	4.5	50
8354122	M50×1.5	30-38	50	10	11	5	57
8354087	PG9	04-Aug	15.2	7	6	2.5	18
8354096	PG11	05-Oct	18.6	7	6	3	20
8354099	PG13.5	06-Dec	20.4	8	7	3	22
8354093	PG16	Aug-14	22.5	8	7	3	24
8354103	PG21	13-18	28.3	8	9	3.5	30
8354106	PG29	18-25	37	9	8.5	4	40
8354100	PG36	22-32	47	10	10	4.5	50

