

RoHS
Compliant



Description

WiFi Tri-Band Antenna

2400~2500MHz / 5150~5850MHz / 5925~7125MHz

RF Specification

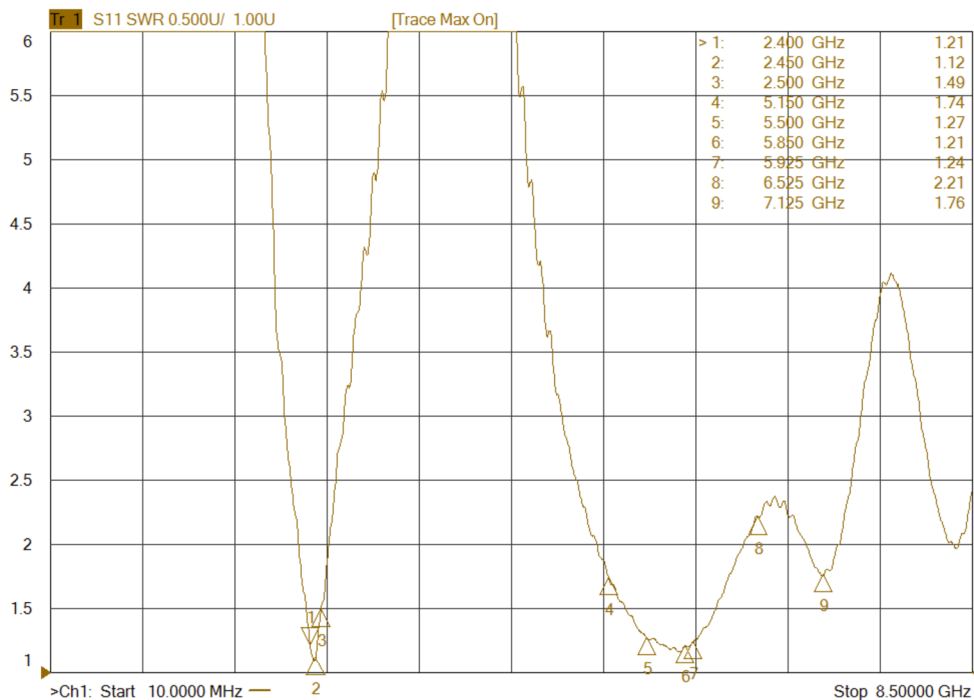
- Frequency Range: 2400~2500 MHz / 5150~5850MHz / 5925~7125 MHz
- Polarization: Linear
- HPBW / Horizontal: 360°
- HPBW / Vertical: 45°
- Peak Gain: 2.3 dBi / 1.9 dBi / 2.8 dBi max.
- Efficiency: 77% / 61% / 61% min.
- VSWR: 2.0 typ.
- Power Handling: 2W(cw)
- Impedance: 50 Ohms
- Connector: RP-SMA Plug

Environmental & Mechanical Characteristics

- Temperature: -10 °C to +55 °C
- Humidity: 95% @55 °C
- Antenna Housing Color: Black
- Antenna Housing Material: PC
- Weight: 17.0g
- Dimensions: 163.7(L)x32.7(W)x13.0(OD)mm

Performance Summary VSWR

Frequency(MHz)	2400~2500	5150~5850	5925~7125
VSWR	2.0 max.:1		



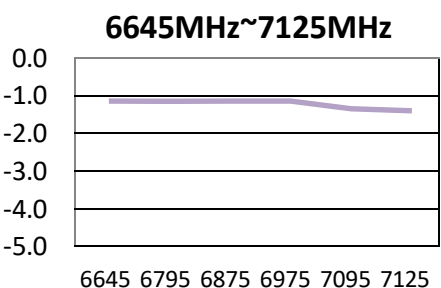
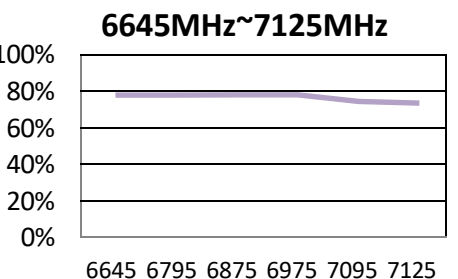
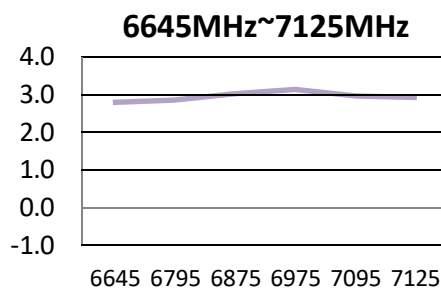
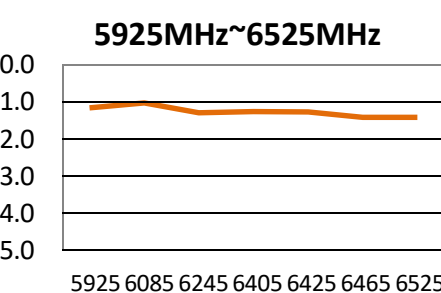
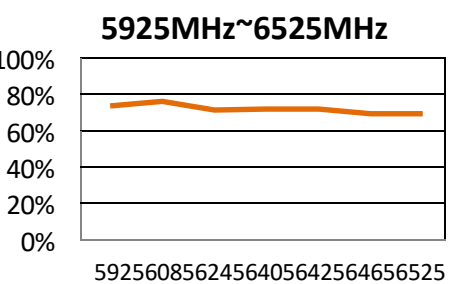
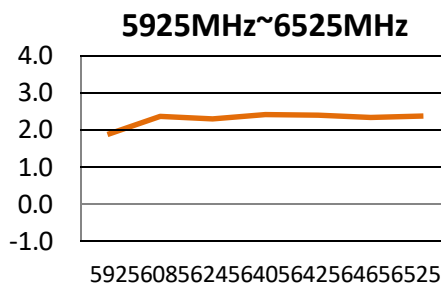
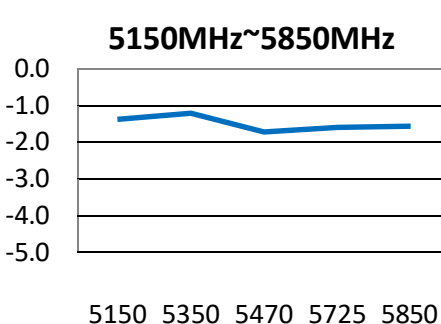
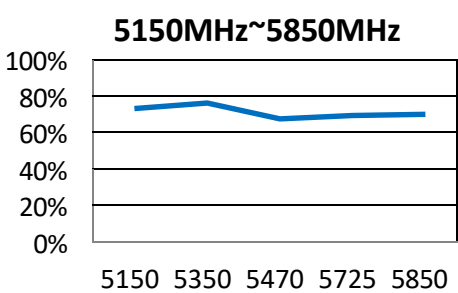
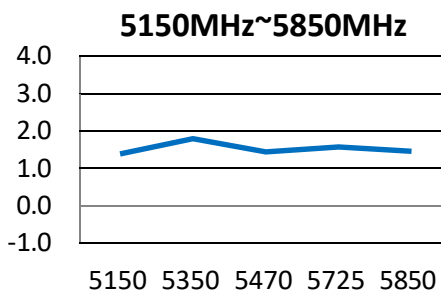
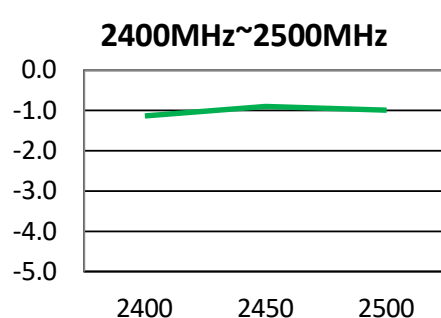
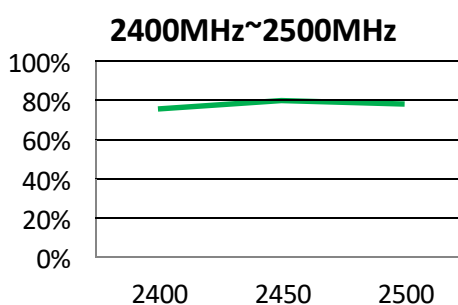
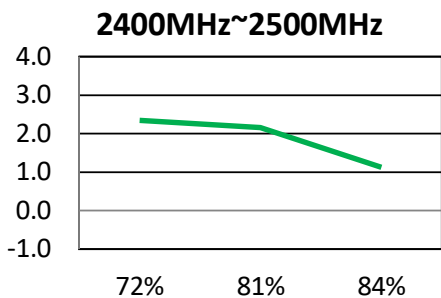
Frequency (MHz)	3D		
	Efficiency	Avg. Gain	Peak Gain
2400	77%	-1.1	2.3
2450	81%	-0.9	2.2
2500	80%	-1	1.1
5150	62%	-2.1	0.2
5350	67%	-1.8	1.2
5500	64%	-2	1.1
5675	69%	-1.6	1.7
5850	69%	-1.6	1.9
5925	70%	-1.6	2.1
6085	70%	-1.5	2.3
6245	65%	-1.9	2
6405	66%	-1.8	2.1
6425	67%	-1.7	2.3
6465	67%	-1.8	2.3
6525	66%	-1.8	2.3
6645	72%	-1.4	2.8
6795	70%	-1.5	2.6
6875	71%	-1.5	2.7
6975	65%	-1.9	2.3
7095	62%	-2.1	2.2
7125	61%	-2.2	1.9

Gain Table

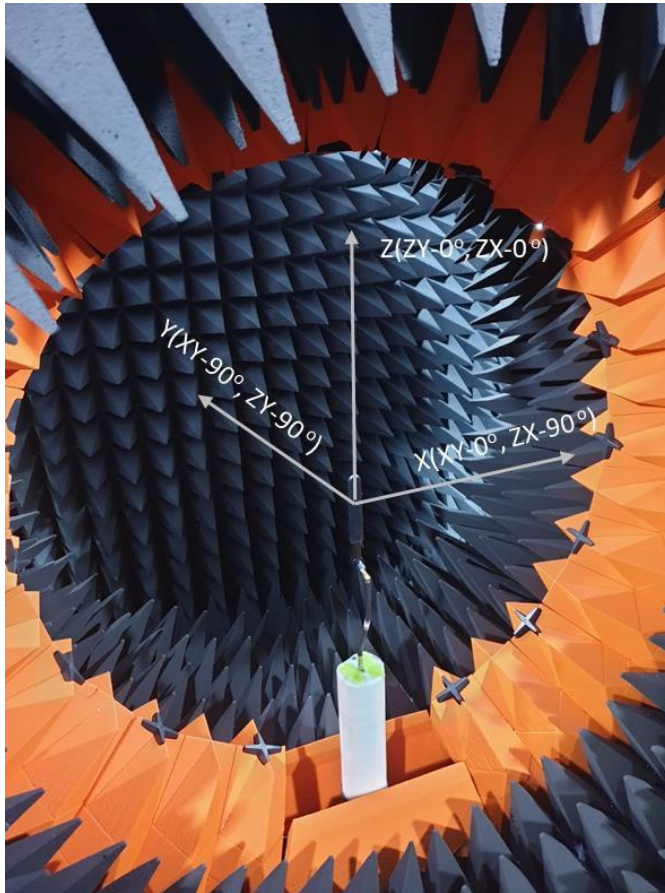
Peak gain

Efficiency

Avg. gain



Antenna Testing Setup and Orientation



3D OTA Chamber-SATIMO Starlab® 2019



Radiation Pattern

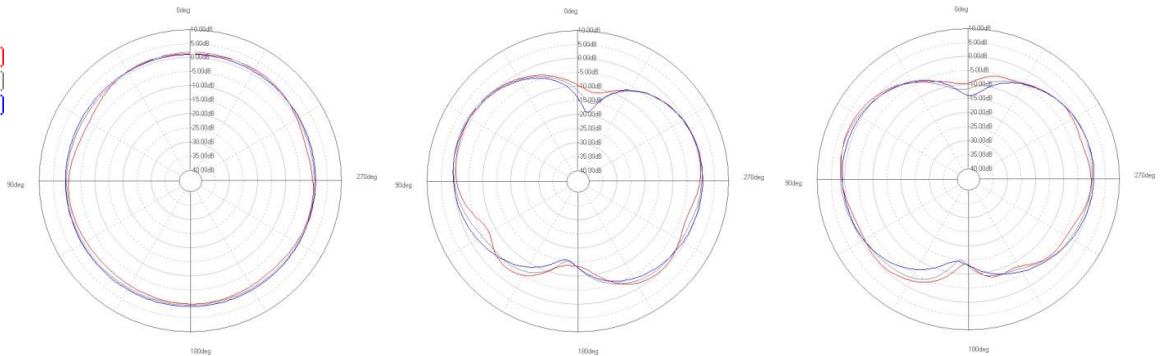
XY-plane

YZ-plane

ZX-plane

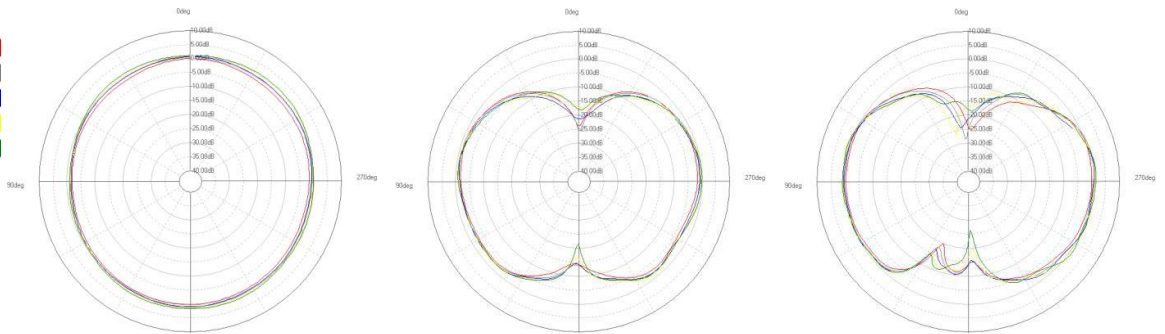
Legend

- 2400.00(MHz)
- 2450.00(MHz)
- 2500.00(MHz)



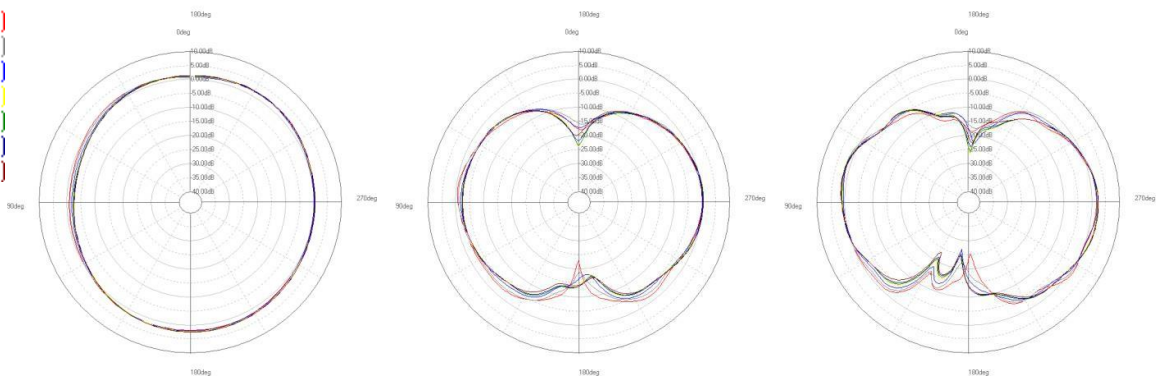
Legend

- 5150.00(MHz)
- 5325.00(MHz)
- 5500.00(MHz)
- 5675.00(MHz)
- 5850.00(MHz)



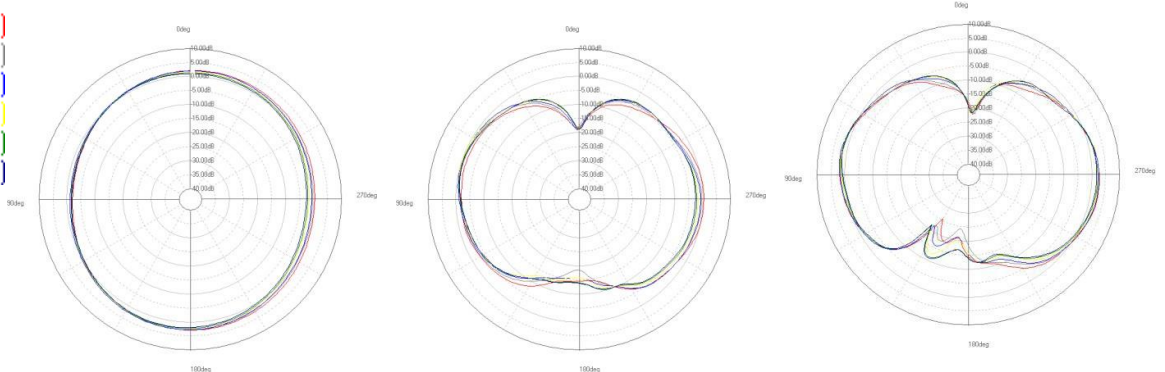
Legend

- 5925.00(MHz)
- 6085.00(MHz)
- 6245.00(MHz)
- 6405.00(MHz)
- 6425.00(MHz)
- 6465.00(MHz)
- 6525.00(MHz)

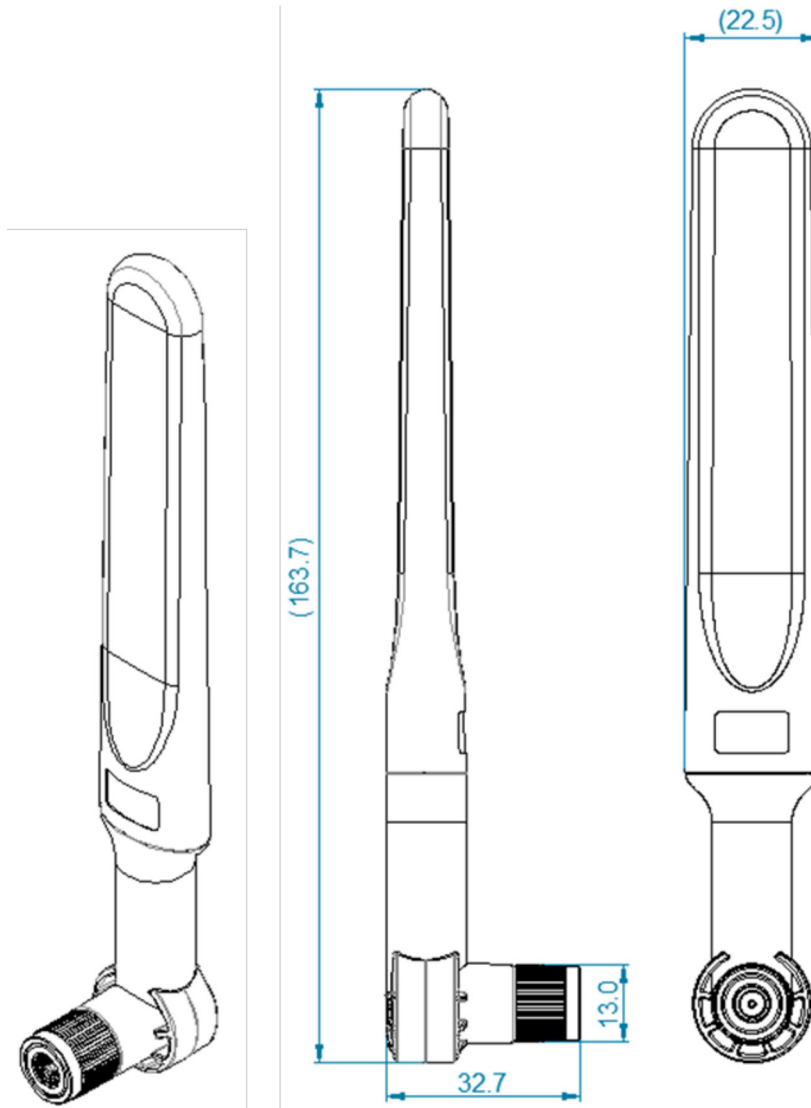


Legend

- 6645.00(MHz)
- 6795.00(MHz)
- 6875.00(MHz)
- 6975.00(MHz)
- 7095.00(MHz)
- 7125.00(MHz)



Installation Guide



Dimensions : Millimetres

Part Number Table

Description	Part Number
WiFi Antenna, Linear, RP-SMA Plug	MP011394

Important Notice : This data sheet and its contents (the "Information") belong to the members of the AVNET group of companies (the "Group") or are licensed to it. No licence is granted for the use of it other than for information purposes in connection with the products to which it relates. No licence of any intellectual property rights is granted. The Information is subject to change without notice and replaces all data sheets previously supplied. The Information supplied is believed to be accurate but the Group assumes no responsibility for its accuracy or completeness, any error in or omission from it or for any use made of it. Users of this data sheet should check for themselves the Information and the suitability of the products for their purpose and not make any assumptions based on information included or omitted. Liability for loss or damage resulting from any reliance on the Information or use of it (including liability resulting from negligence or where the Group was aware of the possibility of such loss or damage arising) is excluded. This will not operate to limit or restrict the Group's liability for death or personal injury resulting from its negligence. Multicomp Pro is the registered trademark of Premier Farnell Limited 2019.